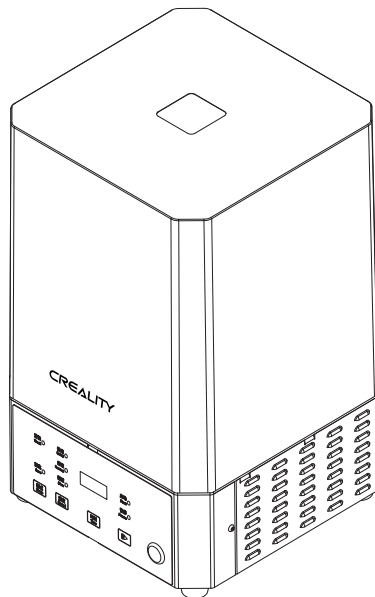


CREALITY

Washing and Curing Machine User Manual

清洗固化机使用说明书

UW-01



V1.2

Content 目录

Dear Consumers,

Thank you for choosing to use the products of Creality 3D. For your convenience, please read the manual carefully before use, and strictly follow the instructions of the manual.

The Creators 3D team is always ready to provide you with quality services. No matter what problems you encounter during use, please contact us according to the telephone and email provided at the end of the manual.

In order for you to experience our products better, you can also obtain equipment operation knowledge in the following ways:

Creality 3D official website: www.creality.com You can log into the Creality 3D official website to find relevant software and hardware, contact information, equipment operation, equipment maintenance and other information.

尊敬的创想三维用户：

感谢您选择、使用创想三维的产品。为了您使用方便，请您在使用之前仔细阅读该说明书，并严格按照说明书的指示进行操作。

创想三维团队时刻准备为您提供优质的服务。在使用过程中无论遇到什么问题，请按照说明书结尾所提供的电话、邮箱与我们联系。

为了您能够更好地体验我们的产品，您还可以从以下方式获取设备操作知识：

创想三维官网：www.cxsw3d.com 您可以登陆创想三维官网寻找相关软硬件、联系方式、设备操作、设备保养等信息。

A

Notes

使用须知

B

Lists of Spare Parts

零部件清单

C

Work Patterns

工作模式

Loading

装料

D

Daily Care

日常保养

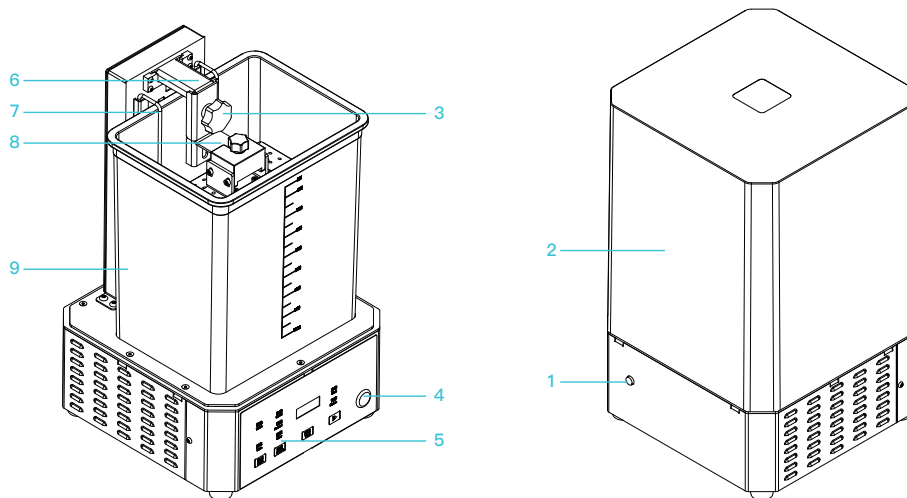
NOTES 使用须知

1. Do not try to use any other methods that not been described in the instruction to avoid personal injury or property damage.
2. Do not place the machine near flammable and explosive materials or high heat sources. Please place the machine in a ventilated, cool and dust-less environment;
3. Do not place the machine in a vibrating or other unstable environment, the shaking of the machine will affect the working effect of the machine.
4. Do not use any other power cables except the one supplied.
5. Product maintenance is often done. When the power is cut off regularly, use a dry cloth to clean the body of the cleaning and curing machine to wipe off the dust.
6. Children under the age of 10, please do not use this machine without personal supervision to avoid personal injury;
7. After the washing liquid is used, it should be sealed in a cool and dry place. If the washing liquid is alcohol, it should be operated in strict accordance with the use specification of alcohol.
8. Do not pick up the upper cover when the cleaning and curing machine is in the curing working mode to prevent harm to human body caused by direct ultraviolet rays.
9. In case of emergency, please turn off the power of cleaning and curing machine directly.
10. Please do not disassemble, clean and solidify the machine without permission. If there is any problem, please contact the after-sale service.

- 1、请勿尝试任何使用说明中没有描述的方法来使用本机，避免造成意外的人身伤害和财产损失；
- 2、请勿将本机放置在易燃易爆物品或高热源附近，请将本机放置在通风、阴凉、少尘的环境内；
- 3、请勿将本机放置在振动较大或者其他不稳定的环境内，机器晃动会影响机器的工作效果；
- 4、请勿在安装过程中使用其他产品电源线代替，请使用本机附带的电源线；
- 5、常做产品维护，定期在断电的情况下，用干布对清洗固化机做机身清洁，拭去灰尘；
- 6、年龄在10岁以下的儿童，请勿在没有人员监督的情况下使用本机，以免造成人身伤害；
- 7、洗涤剂用完后要密封在阴凉干燥的地方，若洗涤剂为酒精，要严格按照酒精的使用规范进行操作；
- 8、清洗固化机在固化的工作模式下，请勿拿起上盖，防止紫外线直射对人体造成伤害；
- 9、如遇紧急情况，请直接关闭清洗固化机的电源；
- 10、请勿私自拆装清洗固化机，如有问题请联系售后。

Equipment Introduction

设备简介



1 Power DC Interface
电源DC接口

2 UV Protective Cover
UV防护罩

3 Hexalobular Socket Screw
梅花胶头拧紧螺丝

4 Switch
电源开关

5 Operation Panel
操作面板

6 Pendant
挂件

7 Washing Basket
清洗篮

8 Suspension Parts
悬挂件

9 Washing Container
清洗桶

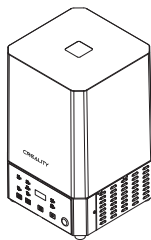
Equipment Parameters

设备参数

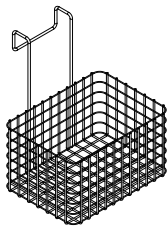
Basic Parameters 基本参数	
Model 型号	UW-01
Machine 机器属性	Washing and Curing 清洗固化
Control Method 控制方式	Touch button, LED indicator, digital time display 触摸按键, LED指示, 数码时间显示
Rated Power 额定功率	60W
Input Voltage 输入电压	24V
Washing and Curing Time 清洗固化时间	2min-90min
Washing Size 清洗尺寸	170*120*160mm (length, width and height) 170*120*160mm (长*宽*高)
Cured size 固化尺寸	165*200mm (Diameter * height) 165*200mm (直径*高)
Machine Size 机器尺寸	225*225*360mm (length, width and height) 225*225*360 (长*宽*高)
Package Size 包装尺寸	298X298X505mm
Machine Weight 机器重量	5kg

Lists of Spare Parts

零部件清单



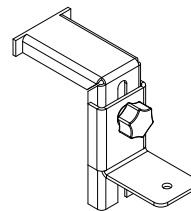
1 Machine Main-Body | 主机 x 1



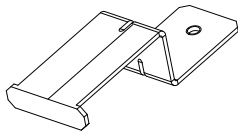
2 Washing Basket | 清洗篮 x 1



3 Washing Container and Washing Container Cover x 1
清洗桶盖子和清洗桶



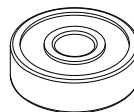
4 Adjustable Bracket x 1
可调平台支架



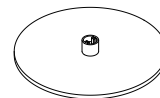
5 Platform Support | 平台支架 x 1



6 Hexagon Wrench 2#, 2.5#, 3# x 1
内六角扳手2#、2.5#、3#



7 Spare Stainless Steel Bearing x 1
备用不锈钢轴承



8 Light Curing Platform x 1
光固化平台



9 Power Adapter | 电源适配器 x 1

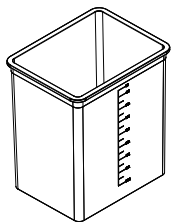


Notes: The accessories above are only for reference, please refer to the physical accessories!
注意：以上配件仅供参考，请以实物为准！

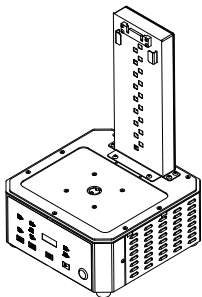
1

Washing Container Installation 清洗桶安装

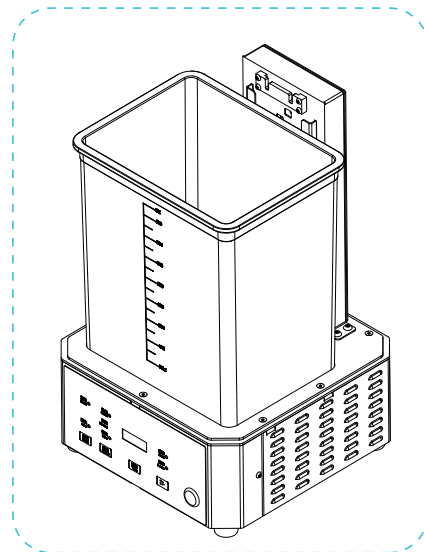
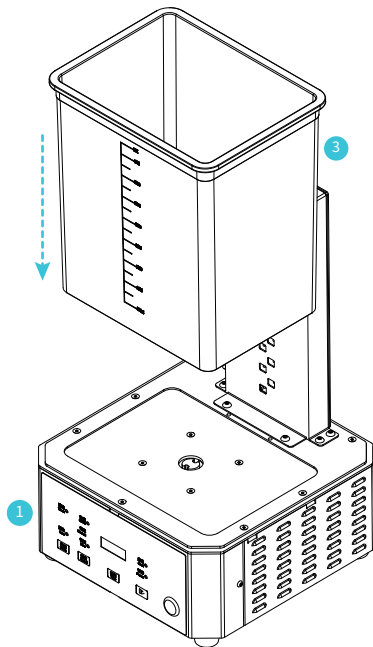
Align the washing container with the groove of the platform and smoothly place it on the platform.
将清洗桶对准底板平台的凹槽，放稳在底板平台上。



3 Washing Container | 清洗桶 x 1



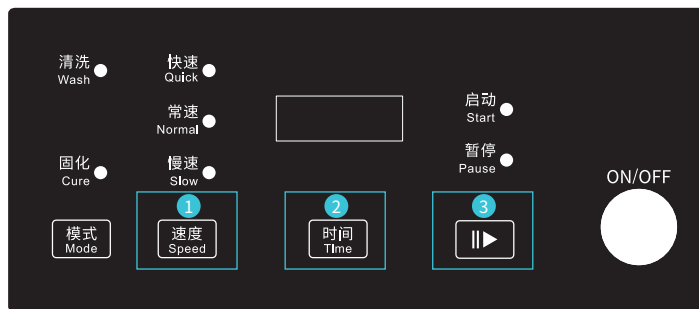
1 Machine Main-Body | 主机 x 1



2

Washing Mode 清洗模式

After the power is started, the default working mode is washing mode. Touch the Speed→Time→Start and the machine will work. The machine beeps to indicate the end of the washing. (If you pick up the UV protective cover during the washing, the program will be paused. When close the UV protective cover, you need to press the start button to resume working.) | 待电源启动之后，机器默认工作模式为清洗模式，轻触面板上的速度→时间→启动，机器就处于清洗工作状态，清洗完成后，机器发出蜂鸣声提示清洗结束。（机器运行中拿起UV防护罩，程序将被暂停，盖上UV防护罩后需按启动键，程序才会恢复运行。）



Note: The operation interface is for reference only, please refer to the real product! | 注意：操作界面仅供参考，请以实物为准！



Reminder: The washing time is set to 2min, 5min...The maximum time is 90min, from 5min to 90min, Press the time button every time to increase the time by 5min; The working time will be displayed accordingly, when starting, the starting indicator light will be on.

温馨提示：清洗时间设置是2min、5min...最高时间是90min，从5min到90min，每按一次时间按钮，时间增加5min；工作的时间会相应显示出来，启动时，启动指示灯亮。



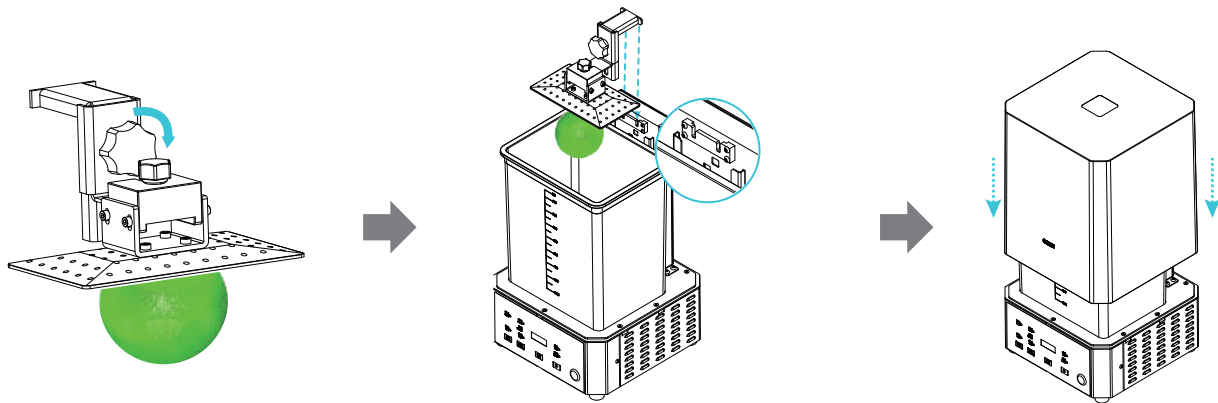
Notes: 1. The washing time is 2 minutes for the smooth model surface, and the time can appropriately prolong for the complicated model. 2.The washing speed is selected according to the amount of alcohol in the washing container. When finish the washing, remove the washing container and close the washing container cover to avoid spilling alcohol on the machine and causing the machine to short circuit. 3.When washing the model, the model should be completely immersed in alcohol. | 注：1. 清洗的时间，对于模型表面不复杂的模型清洗时间为2min，对于复杂的模型适当的增加时间。2. 清洗的速度根据清洗桶酒精的多少，来选定清洗的速度。清洗结束后，请将清洗桶取下并盖上清洗桶盖；避免酒精洒落到机器上，造成机器短路。3. 清洗模型时，模型要完全浸泡在酒精里。

3

Bracket Washing Mode 支架清洗模式

Choose one of two brackets | 支架二选一

Adjustable bracket height: It is recommended to use models with a washing height ≤ 116 . Platform support height: It is recommended to wash the model with $116 \leq \text{height} \leq 160$. After the model is fixed, pour alcohol into it. The alcohol poured cannot exceed the maximum scale of the washing container. | 可调平台支架高度: 建议清洗高度 ≤ 116 的模型使用。平台支架高度: 建议清洗 $116 \leq \text{高度} \leq 160$ 的模型使用,模型固定好后倒入酒精, 倒入的酒精不能超过清洗桶的最大刻度。



1. If the printed model is not taken off from the printing platform, you need to fix the printing platform on the platform support through the platform thumbscrews. 2. Fix and hang the platform bracket on the cleaning equipment.

1. 打印模型未从打印平台取下, 则需将打印平台通过平台手拧螺丝固定在平台支架上。2. 把平台支架固定悬挂在清洗设备上, 平台支架的操作与可调支架用法类似。

3. Place the UV protective cover on the host.

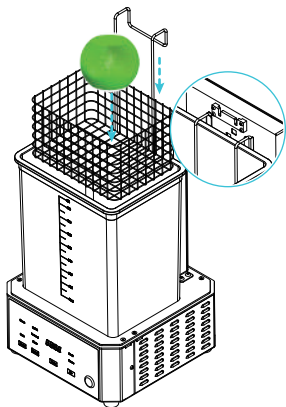
3. 将UV防护罩置于主机上。



The height of the printing platform can be adjusted by hand and the model can be placed on the washing machine after being tightened. 手拧螺丝可以调节打印平台的高度, 拧紧后再将模型放在清洗机上。

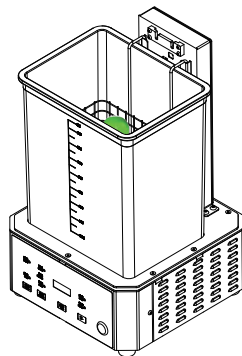
4

Washing Basket Washing Mode 清洗篮清洗模式



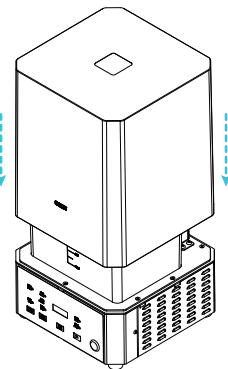
1. The print model has been removed from the printing platform and put into the washing basket, and then the washing basket is fixedly hung on the washing equipment.

1. 打印模型已从打印平台上取下，放入清洗篮里，然后把清洗篮固定悬挂在清洗设备上。



2. The washing basket is fixedly hung on the washing equipment. Please refer to the figure above to clean the model together with the washing basket to prevent the model from falling into the bottom of the washing container through the washing basket hole and damaging the model.

2. 清洗篮固定悬挂在清洗设备上，请参照上图将模型连着清洗篮一起清洗，避免模型透过清洗篮孔掉入清洗桶底部而损坏模型。



3. Place the UV protective cover on the host.

3. 将UV防护罩置于主机上。



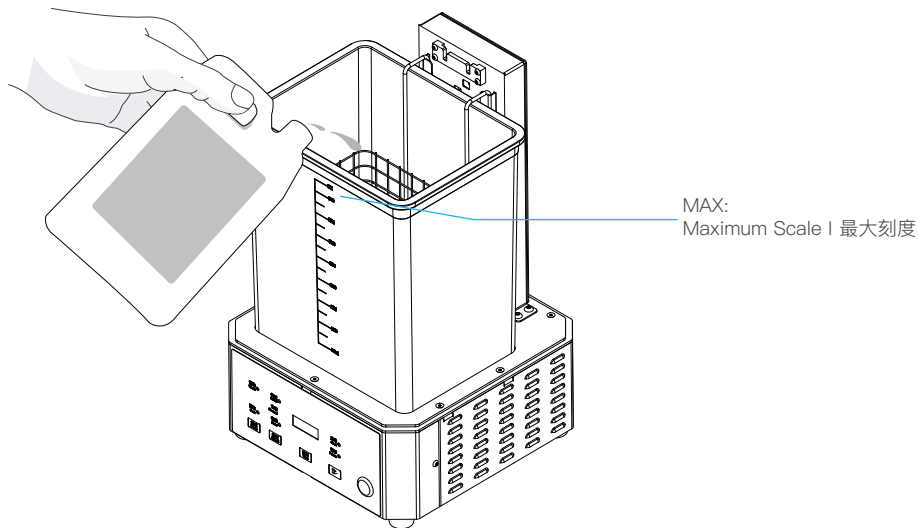
Note: The aperture of the washing basket is 12mm. Do not shovel the model smaller than 12mm from the platform. Please use the adjustable bracket to fix the platform for cleaning to prevent the product from falling into the bottom of the washing container. After the model is fixed, pour alcohol into it. The cleaning fluid cannot exceed the maximum scale of the washing container.

注：清洗篮的孔径为12mm，小于12MM的模型不要从平台铲下，请用可调支架固定平台清洗，避免产品掉入清洗桶底部；模型固定好后倒入酒精，倒入的酒精不能超过清洗桶的最大刻度。

5

Loading 装料

Pour the cleaning liquid into the washing container, the tank capacity is: 500ml/1000ml/1500ml/2000ml/2500ml/3000ml/3500ml/4000ml.
将清洗液体倒入清洗桶，桶位容量分别是：500ml/1000ml/1500ml/2000ml/2500ml/3000ml/3500ml/4000ml.



Tips: The cleaning liquid can be alcohol, detergent solution and other liquids.
提示:清洗液体可以是酒精、洗涤剂溶液等液体。



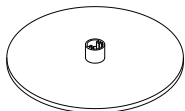
Warning: The cleaning fluid cannot exceed the maximum scale of the washing container!
警示: 清洗液不能超过清洗桶的最大刻度!

6

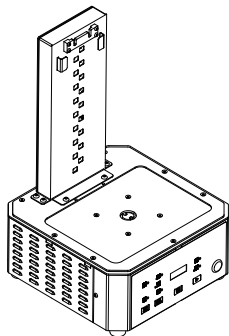
Curing Installation 固化安装

Align the light curing platform with the card position of the bottom plate platform and insert it (if the washing container is on the bottom plate platform, take out the washing container first), then place the model on the light curing platform and cover the UV protective cover.

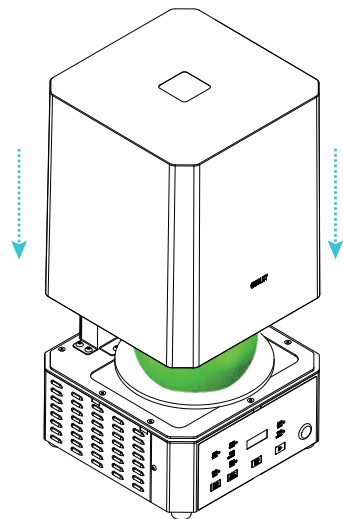
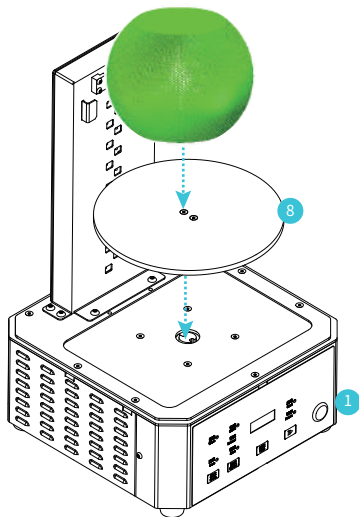
将光固化平台对准底板平台的卡位插入 (清洗桶如果在底板平台上应先将清洗桶取出),然后将模型放在光固化平台上, 盖上UV防护罩。



8 Light Curing Platform | 光固化平台 x 1



1 Machine Main-body | 主机 x 1



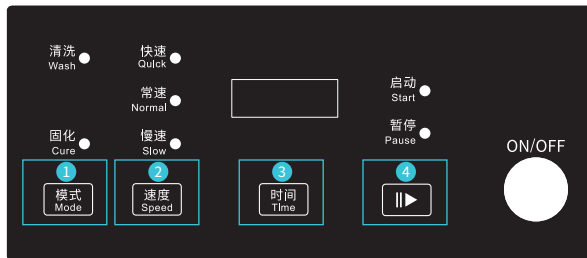
Note: Please tear off the protective film of the light-curing platform before use. The light-curing platform has the effect of mirror reflection. When curing the model, the UV lamp will be reflected on the curing platform, which can increase the light curing effect.

注意: 使用前请撕开光固化平台的保护膜,光固化平台具有镜面反光的效果, 当固化模型的时候, UV灯照在固化平台, 会被反射, 可以增加光固化的效果。

7

Curing Mode 固化模式

Touch the mode on the panel → choose curing mode → curing speed → curing time → start icon to start curing the model; after curing is completed, the machine will send out the buzzer indicates the end of curing. | 轻触面板上的模式 (选择固化)→速度→时间→启动; 固化完成后, 机器发出蜂鸣声提示固化结束。



Note: The operation interface is for reference only, please refer to the real product! | 注意: 操作界面仅供参考, 请以实物为准!



Reminders: 1. The curing time is set to 2min, 5min... the maximum time is 90min; from 5min to 90min, each time you press the time button, the time increases by 5min. 2.The choice of curing time, the model time for the model surface is not complicated is 2min, for the complicated model, the appropriate increase time, the curing speed is generally selected as slow.

温馨提示: 1.固化时间设置是2min、5min...最高时间是90min; 从5min到90min, 每按一次时间按钮, 时间增加5min。2.固化时间的选择, 对于模型表面不复杂的模型时间为2min, 对于复杂的模型适当的增加时间,固化的速度一般选为慢速。



Note 1: During the curing process, if you pick up the UV protective cover during the washing, the program will be paused. When close the UV protective cover, you need to press the start button to resume working. Don't pick up the UV protective cover during the curing.

Note 2: The high temperature of UV protective cover foreplate is regular due to the direct curing light when model solidifying.

Note 3: Do not look at the curing light cause it is too harsh even though UV protective cover has been obstruct 99.995% UV-light when model solidifying

注意1:模型固化过程中,拿起UV防护罩固化程序将被暂停,盖上UV防护罩后需按下启动键程序才会恢复运行;为了不影响固化效果,固化过程中请勿拿起UV防护罩。

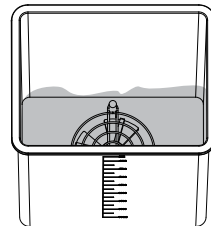
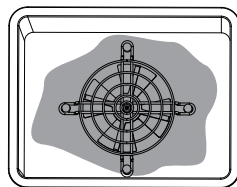
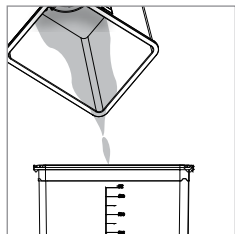
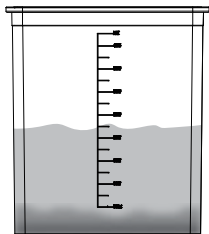
注意2:模型固化过程中,因固化灯直射UV防护罩前板,UV防护罩前板温度较高,属正常现象。

注意3:模型固化过程中,UV防护罩已阻隔99.995%紫外光,灯光刺眼,请勿直视固化灯。

8

Daily Care 日常保养

Recycling of washing liquid: The following treatment method of washing liquid takes "alcohol" as an example. The filtered alcohol still has some resin dissolved in it, but it can still be used to clean the model. | 洗涤液的循环利用：以下对洗涤液的处理方法以“酒精”为例，过滤后的酒精仍溶有部分树脂，但仍然可以继续用于清洗模型。



1. After washing about 30 models with the same barrel of alcohol, the alcohol will become more and more turbid. Let the turbid alcohol stand for about 10 hours to allow the waste to settle.

1. 当用同一桶酒精清洗了大概30个模型后，酒精会越来越浑浊。将浑浊的酒精静置大约10个小时，让废弃物沉淀。

2. Pour the standing upper layer of alcohol into another container, and then clean up the bottom layer of waste. (Exposure the waste to the sun, wait until the alcohol is completely volatilized, and after the resin is cured, it can be treated as ordinary solid waste)

2. 将静置后的上层酒精倒入另一个容器中，再把底层的废弃物清理掉。（把废弃物在阳光下暴晒，待酒精完全挥发，树脂固化后，可做普通固体废物处理）

3. After cleaning up the waste, rinse the washing container several times with water; if the sediment at the bottom of the washing container cannot be washed away, you can remove the stirring fan and scrub separately. (For the method of removing the stirring fan, see the first step of "Cleaning the stirring fan" on the next page).

3. 清理完废弃物后，用水将清洗桶冲洗几遍；若清洗桶底部沉淀物粘稠冲洗不掉，可将搅拌风扇取下后分别刷洗。（搅拌风扇取下方法见下页“搅拌风扇的清洗”的第一步）。

4. After cleaning the washing container, you can pour the filtered alcohol into the washing container again, and cover the washing container lid for the next time you clean the model.

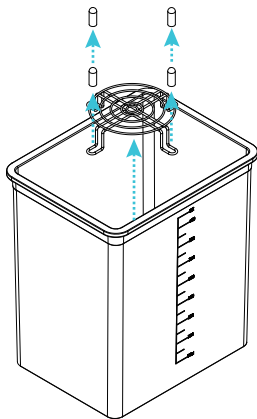
4. 清洗完清洗桶后，可将过滤后的酒精重新倒入清洗桶里，并盖上清洗桶盖，以便下次清洗模型用。

9

Maintenance of Stirring Fans 搅拌扇叶的维护

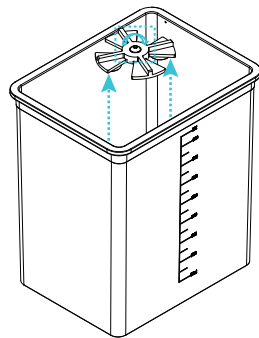
The stirring fan will run at high speed during model cleaning. If any rub occurring to the stainless steel bearing after long-term use, as shown in the following figure, replace the bearing.

清洗模型时,清洗桶上的搅拌扇叶会高速运转,若长期使用后,扇叶里不锈钢轴承有磨损,如下图所示,更换轴承。



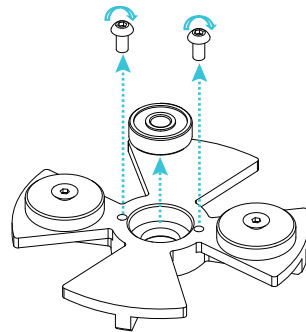
Loosen the rubber protective cover and remove the protective cover.

拧松橡胶保护套,取下防护罩。



Loosen the screws and remove the stirring fan.

拧松螺丝,取下搅拌扇叶。



Loosen the screw and replace the bearing.

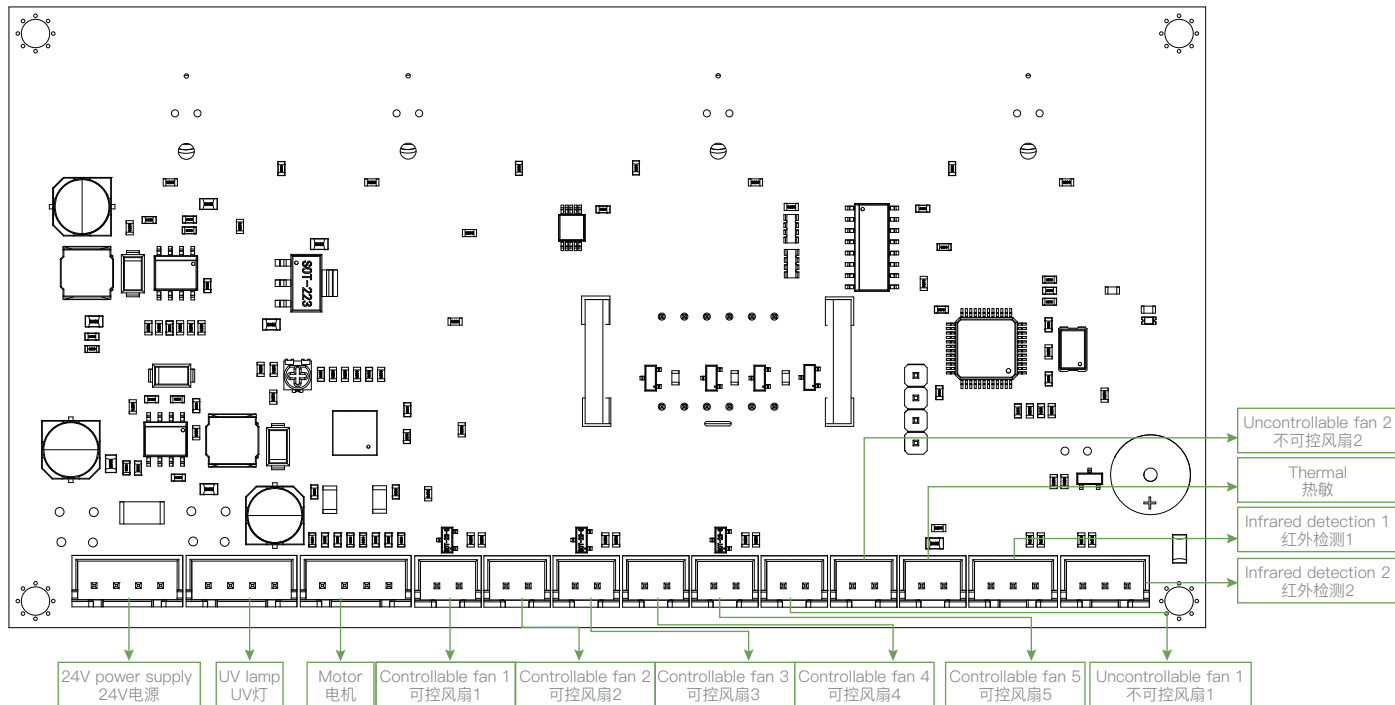
拧松螺丝,更换新轴承。



Install the new bearings according to the reverse operation mentioned above after removing the bearings. | 取下轴承后,按上述反操作安装新的轴承。

Wiring Connection

电路接线



Troubleshooting Guide

故障排除指南

1. The washing machine does not run

- ①The power connection is poor, unplug the power cord, and then plug it in again.
- ②The UV protection cover is not covered. Put the UV protection cover on and try again.

2. During the washing process, the stirring fan in the washing container does not rotate

- ①The stirring fan in the washing container is blocked by foreign objects and does not move. After the power is turned off, pour out the alcohol, remove the foreign objects and power on and clean again.
- ②The sediment at the bottom of the washing container is too viscous, which affects the normal rotation of the motor.

3. Abnormal noise occurs during the operation of the washing machine

- ①The ground where the washing machine is placed is not level enough.
- ②The motor bearing is out of oil. Need to inject ordinary butter into the oil injection hole of the motor.
- ③The screw of the mixing fan in the barrel is loose, and it makes abnormal noise when rotating during the washing process. Reinforce the mixing fan in the barrel with a screwdriver.

4. The model turns white after washing and curing

- ①The concentration of alcohol used for washing is not pure. Need to use more than 95% alcohol for washing.
- ②If the alcohol on the surface of the model solidifies without air drying, whitening will appear. The alcohol on the surface of the model should be allowed to dry before curing.

5. Press the mode switch button of the washing machine, the two mode lights are off

Please try again or restart the machine.

1. 清洗机不运行

- ①电源接触不良,将电源线拔出,再重新插上。
- ②UV防护罩没盖上,将UV防护罩盖上后再次尝试。

2. 清洗过程中,清洗桶内搅拌风扇不转动

- ①清洗桶内搅拌风扇被异物卡住导致不动,断电后将酒精倒出、取下异物后重新上电后再次清洗。
- ②清洗桶底部沉淀物过于粘稠,影响电机的正常转动。

3. 清洗机在运行的过程中出现异响

- ①清洗机放置的地面不够平整。
- ②电机轴承缺油,需在电机的注油孔注入普通黄油。
- ③桶内搅拌风扇螺丝松动,在清洗过程中旋转时发出异响,将桶内搅拌风扇用螺丝刀加固。

4. 清洗固化后模型发白

- ①用于清洗的酒精浓度不纯,需使用超过95%浓度的酒精进行清洗。
- ②如果模型表面的酒精没有风干就固化,就会出现发白。应使模型表面的酒精风干之后,再固化。

5. 清洗机按下模式切换键,三个模式灯都不亮

请再次尝试或重新启动机器。

Due to the differences between different machine models, the physical objects and the final images can differ. The final explanation rights shall be reserved by Shenzhen Crealty 3D Technology Co., Ltd.

因每款机型不同,实物与图可能有所差异, 请以实物为准, 最终解释归深圳市创想三维科技有限公司所有。



SHENZHEN CREALTY 3D TECHNOLOGY CO.,LTD.

18F, JinXiuHongDu Building, Meilong Blvd., Longhua Dist., Shenzhen, China
518131

Official Website: www.crealty.com

Tel: +86 755-8523 4565

E-mail: info@creality.com cs@creality.com



深圳市创想三维科技有限公司

深圳市龙华区民治街道新牛社区梅龙大道锦绣鸿都大厦18F

公司网站: www.cxsw3d.com

服务热线: 400 6133 882

0755-8523 4565

