

Woodworking Band Saw

MODEL : CBS14B



INSTRUCTION MANUAL

Please read the manual before using it

Dear Customer,

Many thanks for the confidence you have shown in us with the purchase of your new machine. This manual has been prepared for the owner and operators of our 14" **band saw** to promote safety during installation, operation and maintenance procedures. Please read and understand the information contained in these operating instructions and the accompanying documents. To obtain maximum life and efficiency from your machine, and to use the machine safely, read this manual thoroughly and follow instructions carefully.

1. TECHNICAL SPECIFICATIONS

NO	ITEMS		UNIT	SPECIFICATIONS
1	Saw wheel diameter		mm	350
2	Table pivot capacity		°	0-45 °
3	Processing Scope	Max height	mm	200
		Max width	mm	335
4	Length of saw blade		mm	2480
	Width of saw blade		mm	6-15
5	Line speed of saw blade		m/min	400 / 900 m/min two Speed
6	Necessary Motor	Power	kW	1.1kW
		Voltage	V	230V
		Frequency	Hz	50Hz
		Rotational speed	/min	1420 /min

2. PACKAGING

Accessories

- 1) Mitre gauge (according to the customers' requirement)
- 2) Manual & Part List
- 3) Saw mouth board

3. IMPORTANT SAFETY INSTRUCTIONS!

READ ALL INSTRUCTIONS BEFORE USING THIS PRODUCT!

3.1 WORK AREA

To Avoid of personal injury, equipment damage, fire and shock, make sure your work area is:

- Free of damp, wet or rainy conditions
- Free of flammable gasses or liquids
- Childproof-use padlocks and master switches when not in use.
- Well-lit
- Clean and uncluttered
- Well –ventilated

3.2 THE OPERATOR

COMMON SENSE AND CAUTION ARE FACTORS WHICH CANNOT BE BUILT INTO ANY PRODUCT. THESE FACTORS MUST BE SUPPLIED BY THE OPERATOR. PLEASE REMAMBER:

- Prevent body contact with grounded surfaces such as pipes or radiators.

- Stay alert. Never operate equipment if you are tired.
- Do not operate the product if under the influence of alcohol or drugs. Read warning labels on prescriptions to determine if your judgment reflexes might be impaired.
- Do not wear loose clothing or jewelry as they can be caught in moving parts.
- Not-skid footwear is recommended.
- Wear restrictive hair covering to contain long hair.
- Use eye and ear protection. Always wear:
 - ANSI approved dust mask or respirator when working around metal wood , and chemical dusts and mists.
 - A full face shield if you are producing metal or wood filings.
 - Ear protectors
- Maintain proper footing and balance at all times.
- Do not reach over or across running machines.

3.3 BEFORE OPERATING

- Know the machine. Learn its applications and limitations as well as the specific potential hazards.
- Check for damage. If part of the machine is damaged. It should be carefully inspected to ensure that it can perform its intended function correctly. If in doubt the part should be replaced.
- Be sure the switch is OFF before plugging in.
- Make sure tool has been cleaned and properly lubricated.
- Check for damaged parts before using any tool, any part that appears damaged should be carefully checked to determine that it will operate properly and perform its intended function.
- Check for alignment and binding of all moving parts broken parts or mounting fixtures and any other condition that may affect proper operation. Any part that is damaged should be properly repaired replaced by a qualified technician.
- Do not use the tool if any switch does not turn off and on properly.

3.4 SPECIAL SAFETY RULES FOR BAND SAWS

- Adjusting the upper guide of saw blade to make it higher about 1/8" than the cut material.
- Saw after the machine rolling regularly select different speed of feeding material according to the different hardness and thickness of wood. Forbid feeding material too fast.
- Check for proper blade size and type make sure that blade's tension and tracking are properly adjusted according to the instruction to change saw blade.
- The worker shouldn't leave the place when the machine is working. Don't forget to cut off the main power source when not working.
- Use foot bolt to forbid the machine leaning to the ground.

4. GROUNDING/VOLTAGE

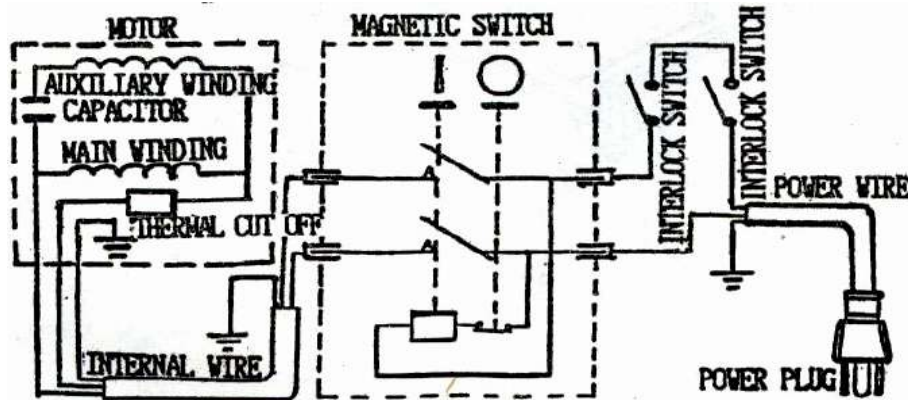
4.1 INSTRUCTION OF GROUNDING

- This machine provides power outlet and cable. And there is grounding wire on it. The contact of outlet on the sawing machine must connect with the case of sawing machine. The other outlet should be correctly plugged in the standard outlet and the outlet should be installed correctly and connected with the earth.
- If grounding wire can't connected properly, it may be struck, Change or repair cable or outlet don't connect the grounding line wrongly.
- When the cable is damaged, change or repair it in time.

4.2 CONNECTION OF POWER SOURCE

The single electric current should be used. The protector should be set in order to protect. Assure that the line voltage should agree with the motor voltage on its plate before running machine.

4.3 WIRE DIAGRAMS



NOTICE: WE SUPPLY YOU INTERLOCK SWITCHES ONLY WHEN YOU PLACE AN ORDER.

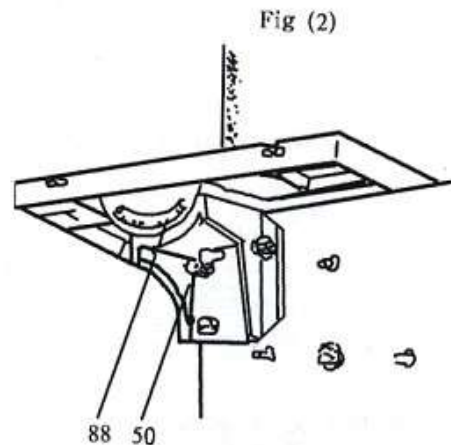
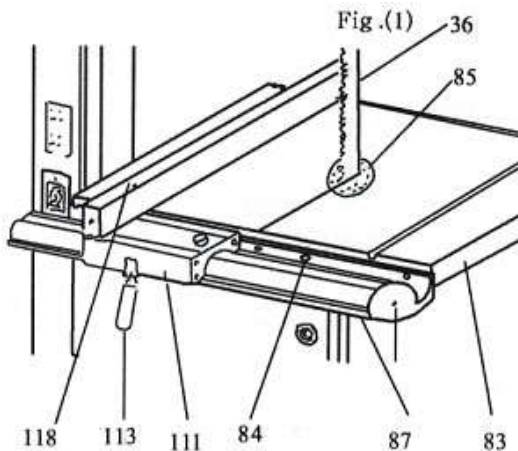
5. TABLE'S TINSTALLING AND ADJUSTING

5.1 INSTALLING TABLE see Fig. (1)

- 1) Install worktable (#83) according to Fig. (1). Fix the saw mouth (#85) into the center of worktable.
- 2) Connect the front fence rail (#87) with the table use 4 hex bolts M6×16 as Fig.(1). Then make the sliding base (#111) plug in the side guide board through its slot. Fix the upper guide board (#118) and the sliding base with screws and bushings.
- 3) Put the upper guide board on the right side of saw blade. Loosen the screws (#106). Take off the upper guide board and loosen the locking handle (#113). Slip the sliding base (#111) to the right side of saw blade (#36). Then fix the upper guide board on the other side of the stand of upper guide board.
- 4) EXERCISE CAUTION! Never force the material into the band saw. You will become familiar with the saw's features from practice and use. If possible, practice sawing with a piece of wood.

5.2 ADJUSTING TABLE ANGLE see Fig. (2)

- 1) If working table is to be used at an angle, make sure to install the angle core board.
- 2) Loosen butterfly nut (#50) and adjust working table to the desired angle using the numbers on the rotating angle rule (#88).
- 3) Tighten butterfly nut (#50) securely so that the working table will not move during operation.



6. MANUAL TO SAW BLADE

6.1 TO CHANGE SAW BLADE

MAKE SURE SWITCH IN "OFF" POSITION. AND UNPLUG THE SANDER BEFORE PERFORMING ANY OF THE STEPS BELOW.

- 1) First open the upper door and lower door (#8) & (#9), then loosen hand wheel (#20). Fig.(3)
- 2) Remove the front fence rail (#87) and saw blade (#36). Fig.(1)
- 3) Select and install the new one.
- 4) Install the front fence rail (#87).
- 5) Roll the hand wheel (#20) to tighten the saw blade. Give the saw blade 3kg side pressure tensile deformation is about 8mm. The tension of saw blade is moderate.
- 6) Roll the upper saw blade with hand, adjust the running track of saw blade(#36) in the protective case by rolling the flower handle (#33) of the back of upper saw wheel housing as Fig.(3) in order to make the saw blade run in the center, then tighten the nut of flower handle.

6.2 BLADE GUIDING see Fig. (4)

- a) The saw blades guide of this band saw ensure an exact guiding of the blade for clean cuts. When using narrow blades ensure that the lower blade guide positively supports the blade from both sides and the rear.
- b) Set the bearings of the upper blade guide to within approx. 0.5mm of the blade, and the bearings against the back of the blade, just clear of it. Do not set the bearing too close, as the friction generates heat, which may have an adverse effect on the bearings and the saw blade as well.

6.3 SETTING THE CUTTING HEIGHT see Fig.(4)

- a) The upper blade guide should always be set as close as practical against the wok. To adjust, loosen the wing nut (#50) at the side of the upper wheel housing, and set the blade guide to the required height.
- b) Tighten wing nut after setting.

Fig.(3)

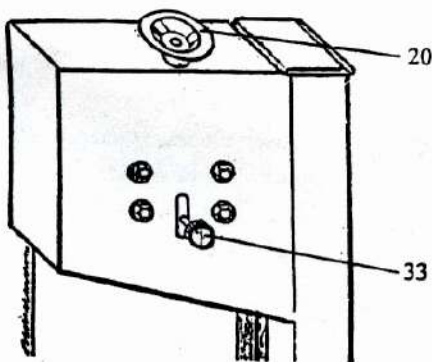
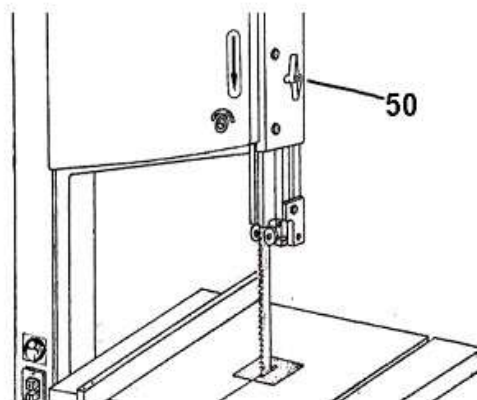


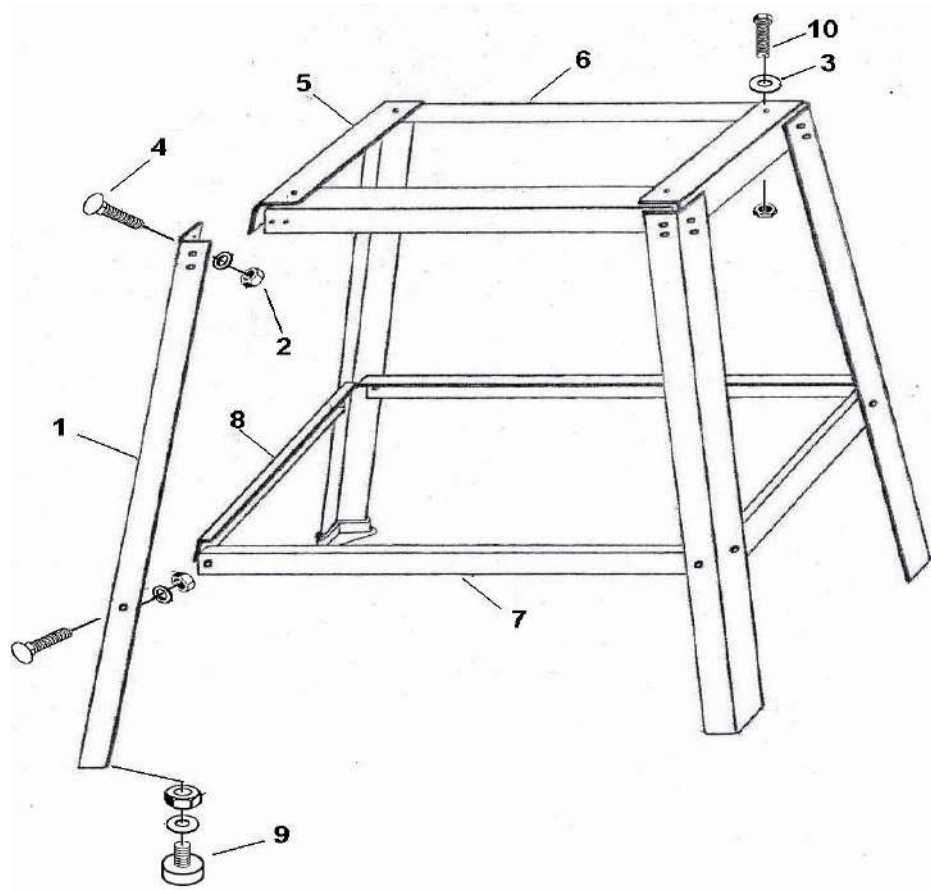
Fig.(4)



7. BREAKDOWN AND THE METHODS OF FIXING BREAKDOWN

Items	Reason	Fixing Method
1. The motor can not start.	<ol style="list-style-type: none"> 1. The power isn't on. 2. The fuse of electric circuit has blown. 3. The electric cable is damaged. 4. The switch isn't "on". 5. The motor is damaged. 	<ol style="list-style-type: none"> 1. Check all the electric circuit. 2. Change the fuse. 3. Repair or change the cable. 4. Check the switch. 5. Change the motor.
2. The saw blade can not cut or the cutting speed is slow.	<ol style="list-style-type: none"> 1. The saw blade is installed on the contrary, the saw teeth cut on the same direction. 2. There are some hard things such as iron or stone etc in the saw teeth. 3. The saw teeth is passive for long time using. 	<ol style="list-style-type: none"> 1. Turn over the saw blade and install it again. 2. Manage to remove the hard things, sharpen the saw teeth. 3. Repair and gring the saw teeth to make it sharp.
3. Slipping saw blade.	<ol style="list-style-type: none"> 1. The saw blade is not straight. 2. The upper wheel doesn't parallel with the lower one, 3. The guiding installation of the saw blade has deflected. 	<ol style="list-style-type: none"> 1. Reinstall the up-to –standard saw blade. 2. Adjust the upper wheel to make it parallel with the lower one. 3. Adjust the guiding installation to make its running direction as same as the saw blade's
4. The saw blade is broken.	<ol style="list-style-type: none"> 1. The direction of the guiding board is deflected. 2. The deflection of the saw teeth is too small or the saw tooth is passive. 3. When cutting too small diameter wood, the saw blade is sprained badly. 4. Speed of filling wood is too high. 5. The saw blade is too tightened. 6. The saw blade is over warrantable period. 	<ol style="list-style-type: none"> 1. Adjust the guiding board correctly. 2. Reshape the saw route, sharpen the saw teeth. . 3. Reinstall the narrow saw blade to make the saw route wide. 4. Slow the speed of sending materials. 5. Loosen the saw blade properly. 6. Renew the saw blade.

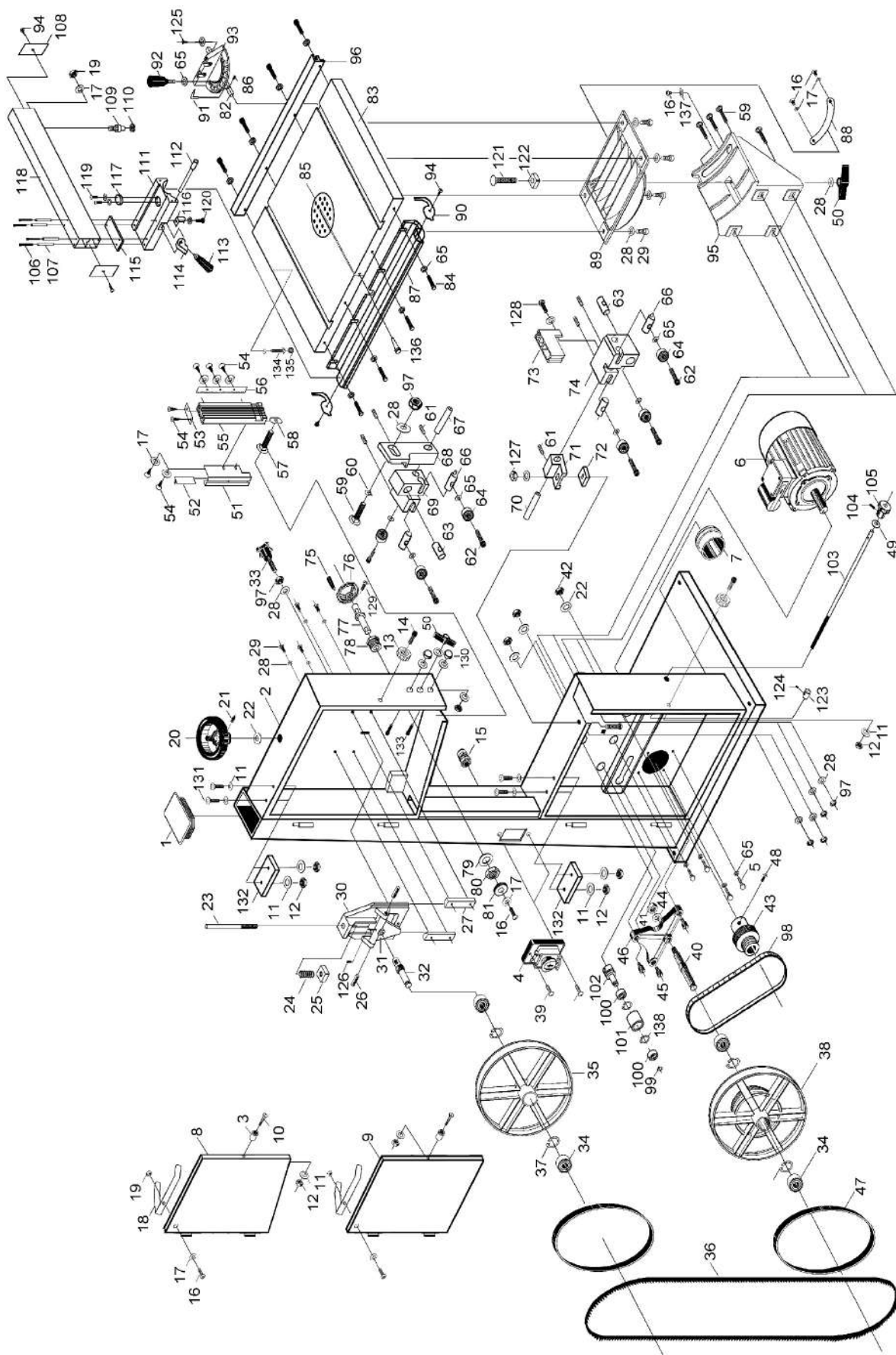
Parts Breakdown for CBS14B Band Saw ---Stand Parts



Parts List for CBS14B Band Saw ---Stand Parts

Index No.	Part No	Description	Q'TY
1	CBS14B-A01	Support parts	4
2	CBS14B-A02	Hex nut M8	32
3	CBS14B-A03	Washer ø8	36
4	CBS14B-A04	Carriage bolt M8×16	24
5	CBS14B-A05	Connected plate (1)	2
6	CBS14B-A06	Connected plate (2)	2
7	CBS14B-A07	Connected plate (3)	2
8	CBS14B-A08	Connected plate (4)	2
9	CBS14B-A09	Rubber washer	4
10	CBS14B-A10	Hex bolt M8×40	4

Parts Breakdown for CBS14B Band Saw



Parts List for CBS14B Band Saw

Index No.	Part No	Description	Size	Q'TY
1	CBS14B-001	Column Cover		1
2	CBS14B-002	Saw Body		1
3	CBS14B-003	Bush		2
4	CBS14B-004	Magnetic Switch		1
5	CBS14B-005	Hexagon Head Screw	M6×16	4
6	CBS14B-006	Motor		1
7	CBS14B-007	Dust Cover		1
8	CBS14B-008	Upper Door		1
9	CBS14B-009	Lower Door		1
10	CBS14B-010	Screw		2
11	CBS14B-011	Washer	4	15
12	CBS14B-012	Hexagon Nut	M4	8
13	CBS14B-013	Knob		2
14	CBS14B-014	Screw		2
15	CBS14B-015	Retainer		1
16	CBS14B-016	Semicircle Head Screw	M5×8	6
17	CBS14B-017	Washer	5	12
18	CBS14B-018	Spring Leaf		2
19	CBS14B-019	Hexagon Nut	M5	3
20	CBS14B-020	Hand Wheel		1
21	CBS14B-021	Screw		1
22	CBS14B-022	Washer	12	4
23	CBS14B-023	Guide Screw Pole		1
24	CBS14B-024	Spring		1
25	CBS14B-025	Square Nut		1
26	CBS14B-026	Steel Dowel		2
27	CBS14B-027	Guide Board Saddle		2
28	CBS14B-028	Washer	8	16
29	CBS14B-029	Hexagon Head Screw	M8×16	8
30	CBS14B-030	Upper Wheel Saddle		1
31	CBS14B-031	Small Triangular Frame		1
32	CBS14B-032	Upper Wheel Axle		1
33	CBS14B-033	Adjusting Handle	M8	1
34	CBS14B-034	Bearing	80203	4
35	CBS14B-035	Upper Saw Wheel		1
36	CBS14B-036	Blade		1
37	CBS14B-037	Axis Elastic Ring		4
38	CBS14B-038	Lower Saw Wheel		1

Index No.	Part No	Description	Size	Q'TY
39	CBS14B-039	Semicircle Head Screw	M4×12	2
40	CBS14B-040	Lower Wheel Axle		1
41	CBS14B-041	Hexagon Nut	M16	1
42	CBS14B-042	Hexagon Nut	M12	3
43	CBS14B-043	Motor Wheel		1
44	CBS14B-044	Washer	16	1
45	CBS14B-045	Adjusting Screw		3
46	CBS14B-046	Big Triangle Frame		1
47	CBS14B-047	Rubber Belt For Saw Wheel		2
48	CBS14B-048	Screw		1
49	CBS14B-049	Washer	10	1
50	CBS14B-050	Butterfly Nut	M8	2
51	CBS14B-051	Upper Blade Guard		1
52	CBS14B-052	Sliding Plate		1
53	CBS14B-053	Spacing Board		1
54	CBS14B-054	Tapping Screw		7
55	CBS14B-055	Connecting Board		1
56	CBS14B-056	Rack		1
57	CBS14B-057	Carriage Bolt	M8×25	1
58	CBS14B-058	Locking Plate		1
59	CBS14B-059	Carriage Bolt	M8×20	5
60	CBS14B-060	Locking Plate		1
61	CBS14B-061	Screw	M6×6	6
62	CBS14B-062	Cap Screw		6
63	CBS14B-063	Mount Shaft		2
64	CBS14B-064	Bearing	80026	6
65	CBS14B-065	Washer	6	24
66	CBS14B-066	Adjusting Shaft		4
67	CBS14B-067	Upper Guide Shaft		1
68	CBS14B-068	Connecting Bracket		1
69	CBS14B-069	Upper Guide Base		1
70	CBS14B-070	Lower Guide Shaft		1
77	CBS14B-077	Eccentric Shaft		1
78	CBS14B-078	Eccentric Bush		1
79	CBS14B-079	Washer	22	1
80	CBS14B-080	Hexagon Nut	M22	
81	CBS14B-081	Gear		1
82	CBS14B-082	Guide Plate		1
83	CBS14B-083	Worktable		1
84	CBS14B-084	Cap Screw	M6×12	8

Index No.	Part No	Description	Size	Q'TY
85	CBS14B-085	Table Insert		1
86	CBS14B-086	Screw		1
87	CBS14B-087	Front Fence Rail		1
88	CBS14B-088	Rotating Angle Rule		1
89	CBS14B-089	Stand Of Worktable		1
90	CBS14B-090	Side Insert		2
91	CBS14B-091	Pointer		1
92	CBS14B-092	Big Handle		1
93	CBS14B-093	Miter Gauge		1
94	CBS14B-094	Tapping Screw		4
95	CBS14B-095	Rolling Fixed Frame		1
96	CBS14B-096	Rear Fence Rail		1
97	CBS14B-097	Hexagon Nut	M8	6
98	CBS14B-098	Drawing Belt		1
99	CBS14B-099	Circles For Shaft		1
100	CBS14B-100	Bearing	80101	2
101	CBS14B-101	Press Wheel		1
102	CBS14B-102	Axle Of Press Wheel		1
103	CBS14B-103	Press Wheel Pole		1
104	CBS14B-104	Screw		1
105	CBS14B-105	Handle Of Press Wheel		1
106	CBS14B-106	Cap Screw	M6×65	4
107	CBS14B-107	Bush		4
108	CBS14B-108	Side Insert		2
109	CBS14B-109	Bearing Bar		1
110	CBS14B-110	Bearing	80027	1
111	CBS14B-111	Sliding Base		1
112	CBS14B-112	Shaft		1
113	CBS14B-113	Locking Handle		1
114	CBS14B-114	Locking Block		1
115	CBS14B-115	Plate		1
116	CBS14B-116	Spring Piece		1
117	CBS14B-117	Convex Window		1
118	CBS14B-118	Upper Guide Board		1
119	CBS14B-119	Semicircle Head Screw	M4×5	2
120	CBS14B-120	Semicircle Head Screw	M4×8	1
121	CBS14B-121	Carriage Bolt	M8×50	1
122	CBS14B-122	Plastic Square Washer		1
123	CBS14B-123	Fix Bush		1
124	CBS14B-124	Screw	M6×12	1

Index No.	Part No	Description	Size	Q'TY
125	CBS14B-125	Semicircle Head Screw	M6×6	1
126	CBS14B-126	Screw		1
127	CBS14B-127	Hexagon Nut	M6	1
128	CBS14B-128	Semicircle Head Screw	M5×14	1
129	CBS14B-129	Screw		1
130	CBS14B-130	Lid Shape Nut		2
131	CBS14B-131	Semicircle Head Screw	M4×30	4
132	CBS14B-132	Safety Switch		2
133	CBS14B-133	Semicircle Head Screw	M6×8	2
134	CBS14B-134	Hexagon Head Screw	M8×25	1
135	CBS14B-135	Rubber Washer		1
136	CBS14B-136	Pin		1
137	CBS14B-137	Pointer		1
138	CBS14B-138	Ring		2

