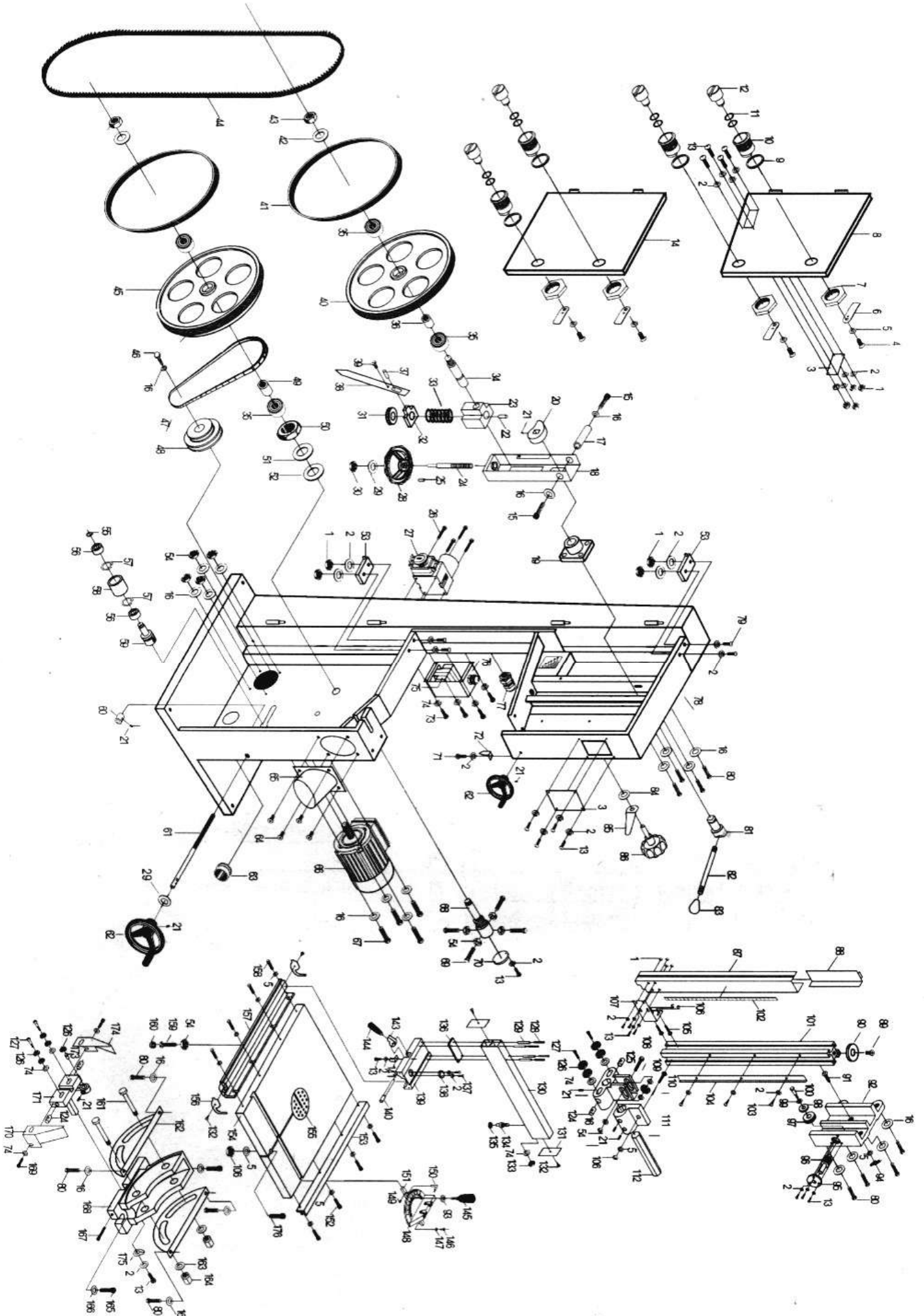


CBS18, CBS20 Parts diagram



PASTS LIST

| NO. | DESCRIPTION | QT'Y | NO. | DESCRIPTION | QT'Y |
|-----|-----------------------------|------|-----|-----------------------------|------|
| 1 | Nut M4 | | 43 | Nut M24×1.5 | |
| 2 | Flat washer ø4 | | 44 | Saw blade | |
| 3 | Clear window | | 45 | Lower wheel | |
| 4 | Screw M6×8 | | 46 | Hex bolt M8×30 | |
| 5 | Plastic washer ø6 | | 47 | V-belt | |
| 6 | Lock plate | | 48 | Motor pulley | |
| 7 | Plastic nut | | 49 | Bush | |
| 8 | Upper door | | 50 | Nut M30×1.5 | |
| 9 | Plastic washer | | 51 | Washer | |
| 10 | Door axis bush | | 52 | Washer | |
| 11 | Washer ø10 | | 53 | Microswitch | |
| 12 | Door axis | | 54 | Nut M8 | |
| 13 | Rivet M4×10 | | 55 | Ring retaining 12 | |
| 14 | Lower door | | 56 | Bearing 101 | |
| 15 | Hex bolt M8×10 | | 57 | Ring retaining | |
| 16 | Flat washer ø8 | | 58 | V-belt pulley | |
| 17 | Upper shaft | | 59 | Shaft for V-belt pulley | |
| 18 | Upper wheel sliding bracket | | 60 | Bush | |
| 19 | Pillow block | | 61 | Thread rod | |
| 20 | Cam | | 62 | Small handwheel | |
| 21 | Hex bolt M6×10 | | 63 | Dust chute | |
| 22 | Roll pin 5×35 | | 64 | Screw M5×6 | |
| 23 | Upper wheel shaft hinge | | 65 | Dust chute | |
| 24 | Adjusting rod | | 66 | Motor | |
| 25 | Screw M4×20 | | 67 | Bolt M8×30 | |
| 26 | Screw M4×60 | | 68 | Lower wheel shaft | |
| 27 | Switch | | 69 | Hex bolt M8×25 | |
| 28 | Big handwheel | | 70 | Plate | |
| 29 | Washer ø12 | | 71 | Semicircle head screw M4×8 | |
| 30 | Nut M12 | | 72 | Pointer | |
| 31 | Bearing 8101 | | 73 | Semicircle head screw M5×10 | |
| 32 | Block | | 74 | Washer ø5 | |
| 33 | Spring | | 75 | Contactor | |
| 34 | Upper wheel shaft | | 76 | Contactor box | |
| 35 | Bearing 105 | | 77 | Wire hanger | |
| 36 | Bush | | 78 | Frame | |
| 37 | Screw | | 79 | Semicircle head screw M4×30 | |
| 38 | Pointer | | 80 | Nut M8×16 | |
| 39 | Step screw | | 81 | Shaft | |
| 40 | Upper wheel | | 82 | Rod | |
| 41 | Tire | | 83 | Shaft end | |
| 42 | Washer 24 | | 84 | Washer ø10 | |

PASTS LIST

| NO. | DESCRIPTION | QT'Y | NO. | DESCRIPTION | QT'Y |
|-----|---------------------------|------|-----|--------------------------|------|
| 85 | thread handle | | 138 | Convex window | |
| 86 | Knob bolt | | 139 | Adjustable base | |
| 87 | Protective cover | | 140 | Shaft | |
| 88 | Sliding plate | | 141 | Spring piece | |
| 89 | Screw M6×12 | | 143 | Lock mechanism | |
| 90 | Washer | | 144 | Locking handle | |
| 91 | Bolt M6×30 | | 145 | Handle | |
| 92 | Guide bracket | | 146 | Washer ø6 | |
| 93 | Big washer ø6 | | 147 | Screw M6×6 | |
| 94 | Butterfly nut M6 | | 148 | Miter gauge | |
| 95 | Ring retaining | | 149 | Hex bolt M4×6 | |
| 96 | Worm cylinder | | 150 | Pointer | |
| 97 | Gear | | 151 | Guide bar | |
| 98 | Gear | | 152 | Hex bolt M6×12 | |
| 99 | Washer | | 153 | Rear fence rail | |
| 100 | Fixed bolt | | 154 | Table | |
| 101 | Upper guide hose | | 155 | Table insert | |
| 102 | Scale | | 156 | Slide guide end plate | |
| 103 | Screw M4×8 | | 157 | Front fence rail | |
| 104 | Rack | | 158 | Bolt M6×16 | |
| 105 | Bolt M6×12 | | 159 | Bolt M8×25 | |
| 106 | Nut M6 | | 160 | Washer | |
| 107 | Locking plate | | 161 | Carriage bolt | |
| 108 | Adjusting bolt | | 162 | Trunnion plate | |
| 109 | Small washer ø10 | | 163 | Washer ø14 | |
| 110 | Bolt M6×16 | | 164 | Square nut | |
| 111 | Upper guide support block | | 165 | Hex bolt M10×30 | |
| 112 | Adjusting bar | | 166 | Big washer ø10 | |
| 124 | Guide ring | | 167 | Hex bolt M6×50 | |
| 125 | Upper blade guide support | | 168 | Trummion support bracket | |
| 126 | Bearing | | 169 | Hex bolt M5×10 | |
| 127 | Hex bolt | | 170 | Right cover | |
| 128 | Hex bolt M6×65 | | 171 | Lower blade guide seat | |
| 129 | Bush | | 173 | Eccentric bearing bar | |
| 130 | Support tube | | 174 | Left cover | |
| 131 | Side plastic insert | | 175 | Pointer | |
| 132 | Screw M3×10 | | 176 | Hex bolt M6×35 | |
| 133 | Nut M5 | | | | |
| 134 | Ball bearing bar | | | | |
| 135 | Ball bearing | | | | |
| 136 | Bracket | | | | |
| 137 | Hex bolt M4×5 | | | | |

