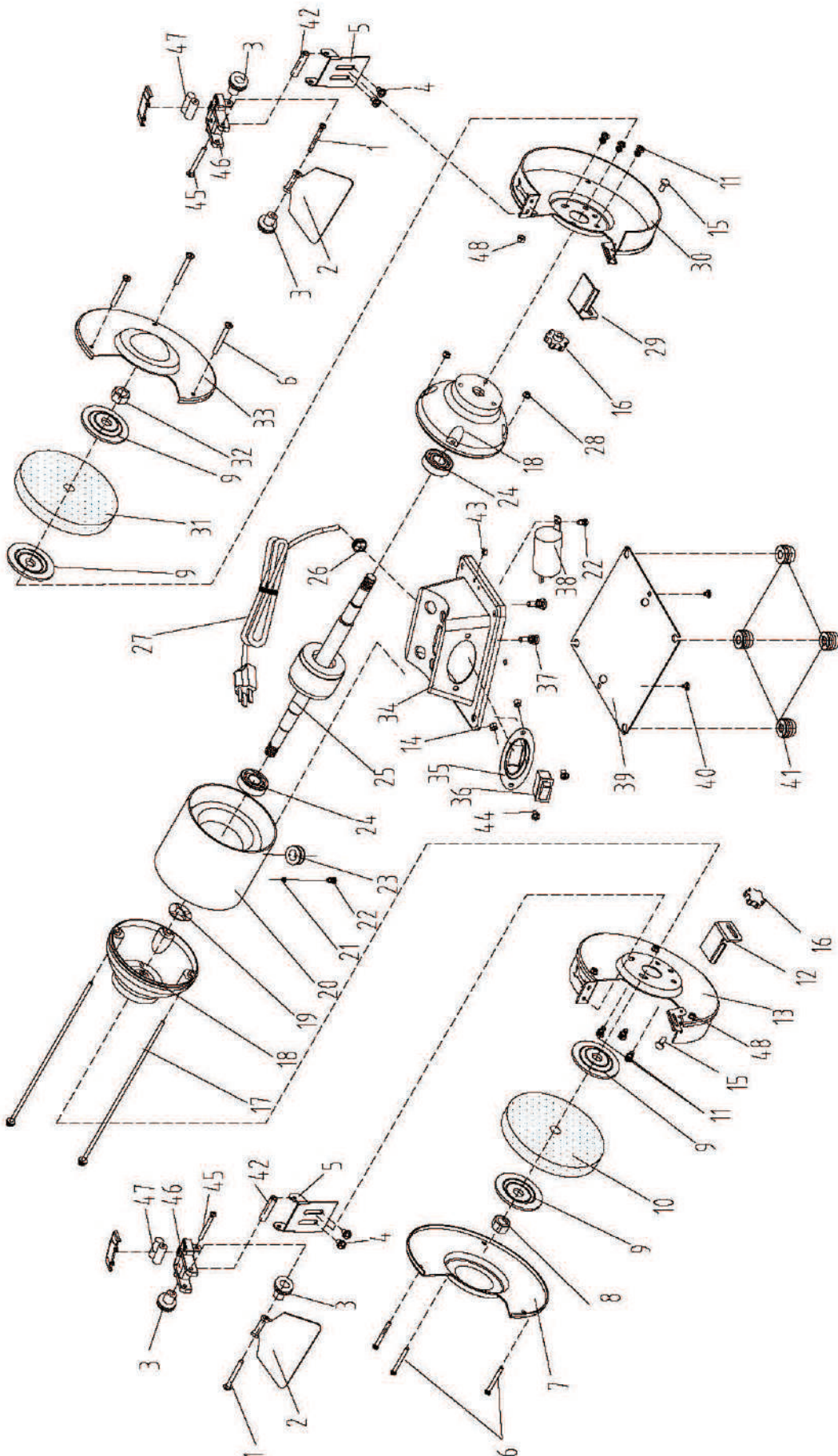


6. Explode view



6. PARTS LIST

No	Name	Spec	QTY	No	Name	Spec	QTY
1	Screw	M5X55	2	26	Lead loop		1
2	Protective glass		2	27	Plug		1
3	Lens lock nut	M5	4	28	hexagon nut with flange	M4	2
4	Screw+spring washer+washer	M5X8	4	29	Right movable bracket		1
5	Protective glass holder		2	30	Right guard inner cover		1
6	Screw	M5X42	6	31	Grinding wheel	Φ150X20XΦ12.7 60#	1
7	Left shield cover		1	32	Hexagon nut	M12	1
8	Hexagon nut	M12	1	33	Right shield cover		1
9	Chuck		4	34	Base		1
10	Grinding wheel	Φ150X20XΦ12.7 36#	1	35	Switch baseplate		1
11	Screw+spring washer+washer	M5X10	6	36	Switch	HY35C	1
12	Left movable bracket		1	37	Screw+spring washer	M6X10	2
13	Left guard inner cover		1	38	Capacitor		1
14	hexagon nut with flange	M4	2	39	Galvanized partition		1
15	Bolt	M6X14	2	40	Screw+washer	M5X8	2
16	Bracket lock nut	M6	2	41	Rubber foot		4
17	Screw+washer	M4X135	2	42	Mat cover		2
18	End cap		2	43	hexagon nut with flange	M4	1
19	Corrugated spring washer	D34.5	1	44	Screw	M4X8	2
20	Stator		1	45	Screw	M5X60	2
21	Toothed washer	D4	1	46	Light assy		2
22	Screw+spring washer+washer	M4X7	2	47	AAA battery		4
23	Lead sheath		1	48	Flange nut	M5	6
24	Bearing	6202-RZ	2	49	Flange nut	M5	6
25	Rotor		1				