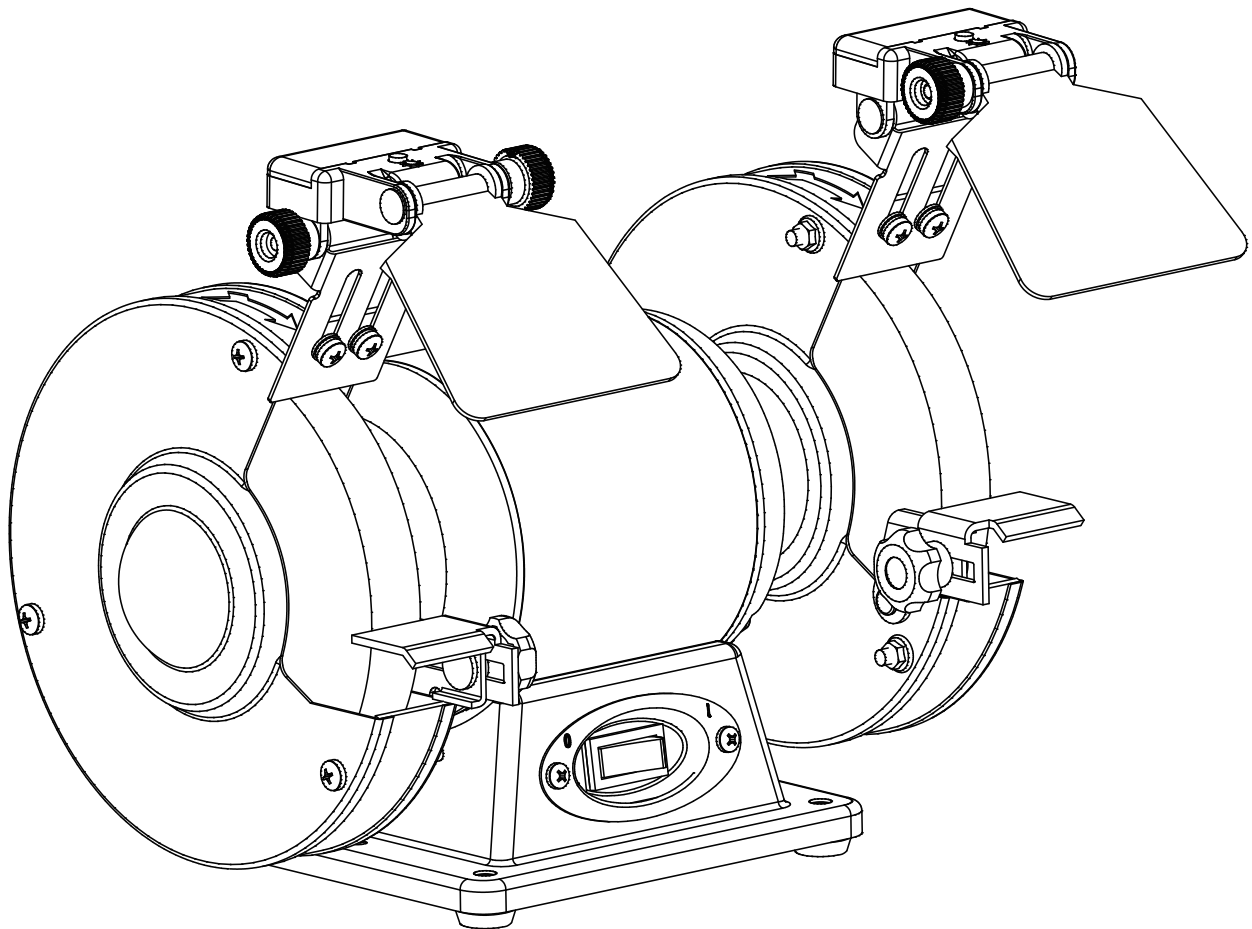
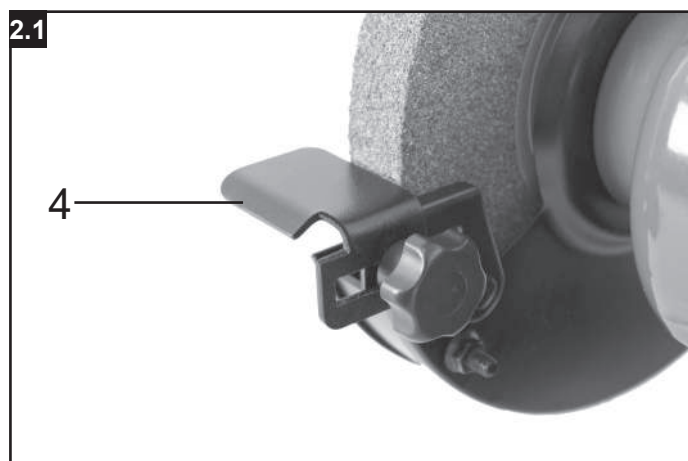
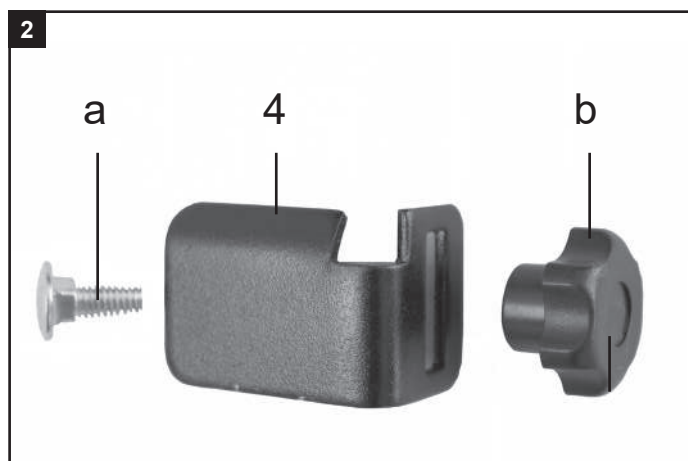
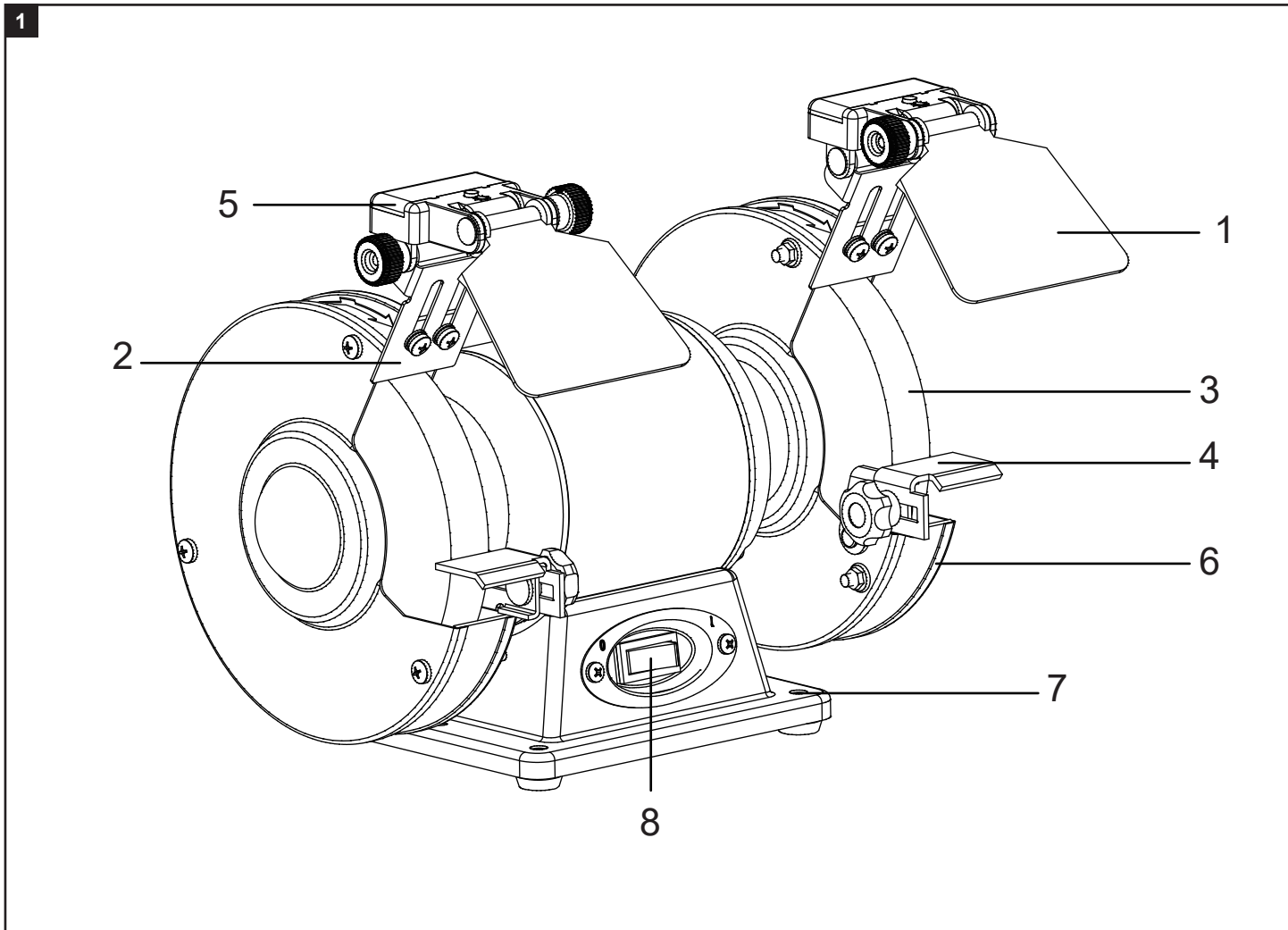


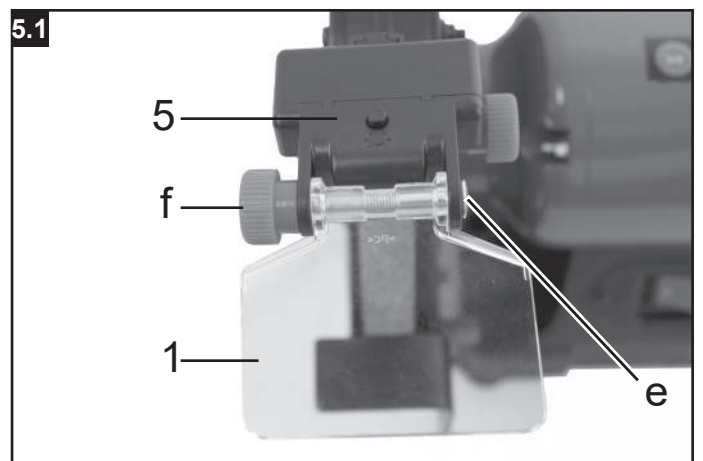
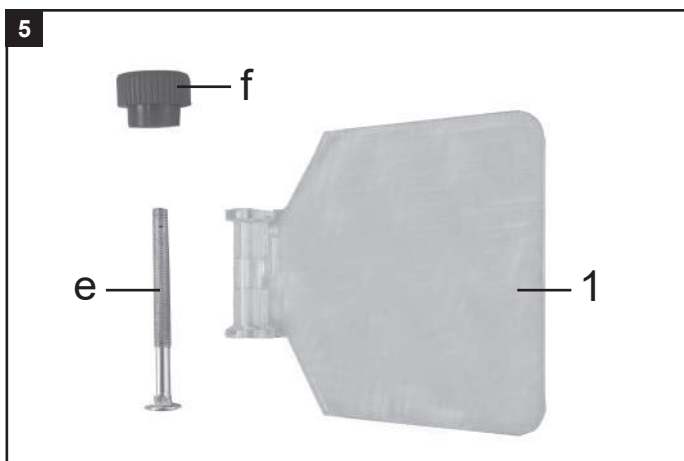
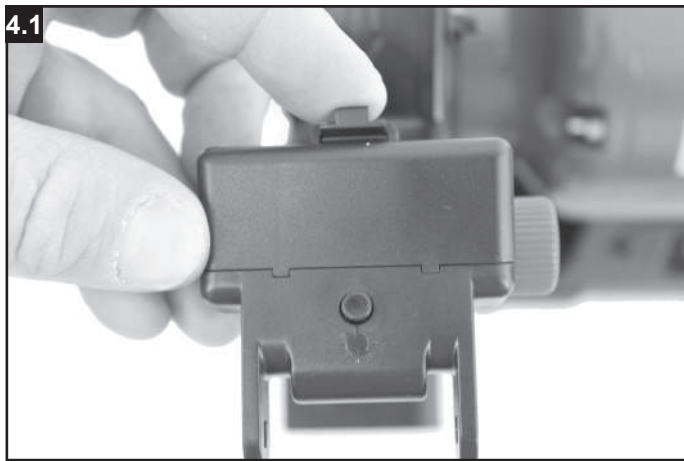
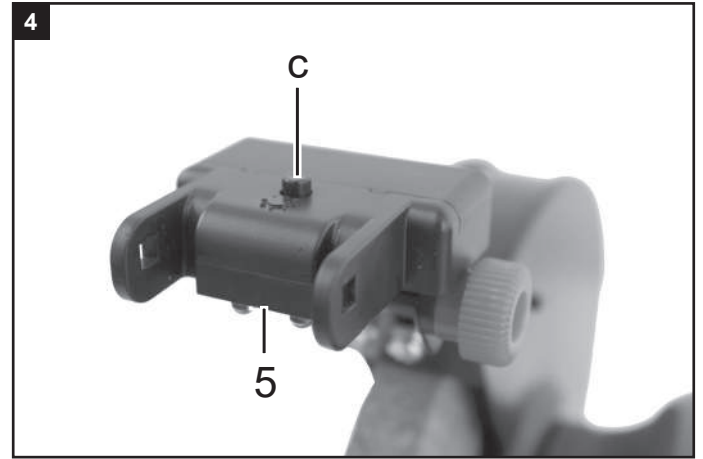
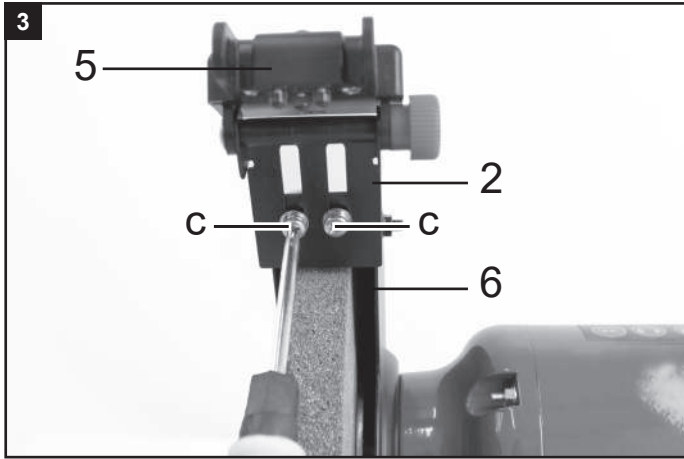


INSTRUCTION MANUAL

6" BENCH GRINDER WITH LED LIGHT







1. Introduction

Dear customer,

We hope your new tool brings you much enjoyment and success.

We recommend:

Read through the complete text in the operating instructions before installing and commissioning the device.

The operating instructions are intended to help the user to become familiar with the machine and take advantage of its application possibilities in accordance with the recommendations.

The operating instructions contain important information on how to operate the machine safely, professionally and economically, how to avoid danger, costly repairs, reduce downtimes and how to increase reliability and service life of the machine.

In addition to the safety regulations in the operating instructions, you have to meet the applicable regulations that apply for the operation of the machine in your country.

Keep the operating instructions package with the machine at all times and store it in a plastic cover to protect it from dirt and moisture. Read the instruction manual each time before operating the machine and carefully follow its information. The machine can only be operated by persons who were instructed concerning the operation of the machine and who are informed about the associated dangers. The minimum age requirement must be complied with.

In addition to the safety instructions contained in this operating manual and the specific regulations of your country, the technical rules generally accepted for the operation of machines of the same type must be observed.

We accept no liability for damage or accidents which arise due to non-observance of these instructions and the safety information.

2. Layout and items supplied (Fig. 1)

Know your bench grinder

1. Eye shield
2. Spark guard
3. Grinding wheels (right: 60 grit, left: 36 grit)
4. Work rest
5. LED work lamp
6. Wheel Guard
7. Bolt Hole for Bench Mounting
8. Main Switch (On/Off)

3. Scope of delivery

- Bench Grinder
- User's Manual
- Open the packaging and remove the device carefully.
- Remove the packaging material as well as the pack aging and transport bracing (if available).
- Check that the delivery is complete.
- Check the device and accessory parts for transport damage.
- If possible, store the packaging until the warranty period has expired.

⚠ ATTENTION!

The device and packaging materials are not toys! Children must not be allowed to play with plastic bags, film and small parts! There is a risk of swallowing and suffocation!

4. Safety instructions

General power tool safety warnings

⚠ WARNING!

Read all safety warnings, instructions, illustrations and specifications provided with this power tool.

Failure to follow all instructions listed below may result in electric shock, fire and/or serious injury.

Save all warnings and instructions for future reference.

The term "power tool" in the warnings refers to your mains-operated (corded) power tool or battery-operated (cordless) power tool.

1. Work area safety

- a) Keep work area clean and well lit.** Cluttered or dark areas invite accidents.
- b) Do not operate power tools in explosive atmospheres, such as in the presence of flammable liquids, gases or dust.** Power tools create sparks which may ignite the dust or fumes.
- c) Keep children and bystanders away while operating a power tool.** Distractions can cause you to lose control.

2. Electrical safety

- a) Power tool plugs must match the outlet. Never modify the plug in any way. Do not use any adapter plugs with earthed (grounded) power tools.** Unmodified plugs and matching outlets will reduce risk of electric shock.

- b) **Avoid body contact with earthed or grounded surfaces, such as pipes, radiators, ranges and refrigerators.** There is an increased risk of electric shock if your body is earthed or grounded.
- c) **Do not expose power tools to rain or wet conditions.** Water entering a power tool will increase the risk of electric shock.
- d) **Do not abuse the cord. Never use the cord for carrying, pulling or unplugging the power tool. Keep cord away from heat, oil, sharp edges or moving parts.** Damaged or entangled cords increase the risk of electric shock.
- e) **When operating a power tool outdoors, use an extension cord suitable for outdoor use.** Use of a cord suitable for outdoor use reduces the risk of electric shock.
- f) **If operating a power tool in a damp location is unavoidable, use a residual current device (RCD) protected supply.** Use of an RCD reduces the risk of electric shock.

3. Personal safety

- a) **Stay alert, watch what you are doing and use common sense when operating a power tool. Do not use a power tool while you are tired or under the influence of drugs, alcohol or medication.** A moment of inattention while operating power tools may result in serious personal injury.
- b) **Use personal protective equipment. Always wear eye protection.** Protective equipment such as a dust mask, non-skid safety shoes, hard hat or hearing protection used for appropriate conditions will reduce personal injuries.
- c) **Prevent unintentional starting. Ensure the switch is in the off-position before connecting to power source and/or battery pack, picking up or carrying the tool.** Carrying power tools with your finger on the switch or energising power tools that have the switch on invites accidents.
- d) **Remove any adjusting key or wrench before turning the power tool on.** A wrench or a key left attached to a rotating part of the power tool may result in personal injury.
- e) **Do not overreach. Keep proper footing and balance at all times.** This enables better control of the power tool in unexpected situations.
- f) **Dress properly. Do not wear loose clothing or jewellery. Keep your hair and clothing away from moving parts.** Loose clothes, jewellery or long hair can be caught in moving parts.
- g) **If devices are provided for the connection of dust extraction and collection facilities, ensure these are connected and properly used.** Use of dust collection can reduce dust-related hazards.

- h) **Do not let familiarity gained from frequent use of tools allow you to become complacent and ignore tool safety principles.** A careless action can cause severe injury within a fraction of a second.

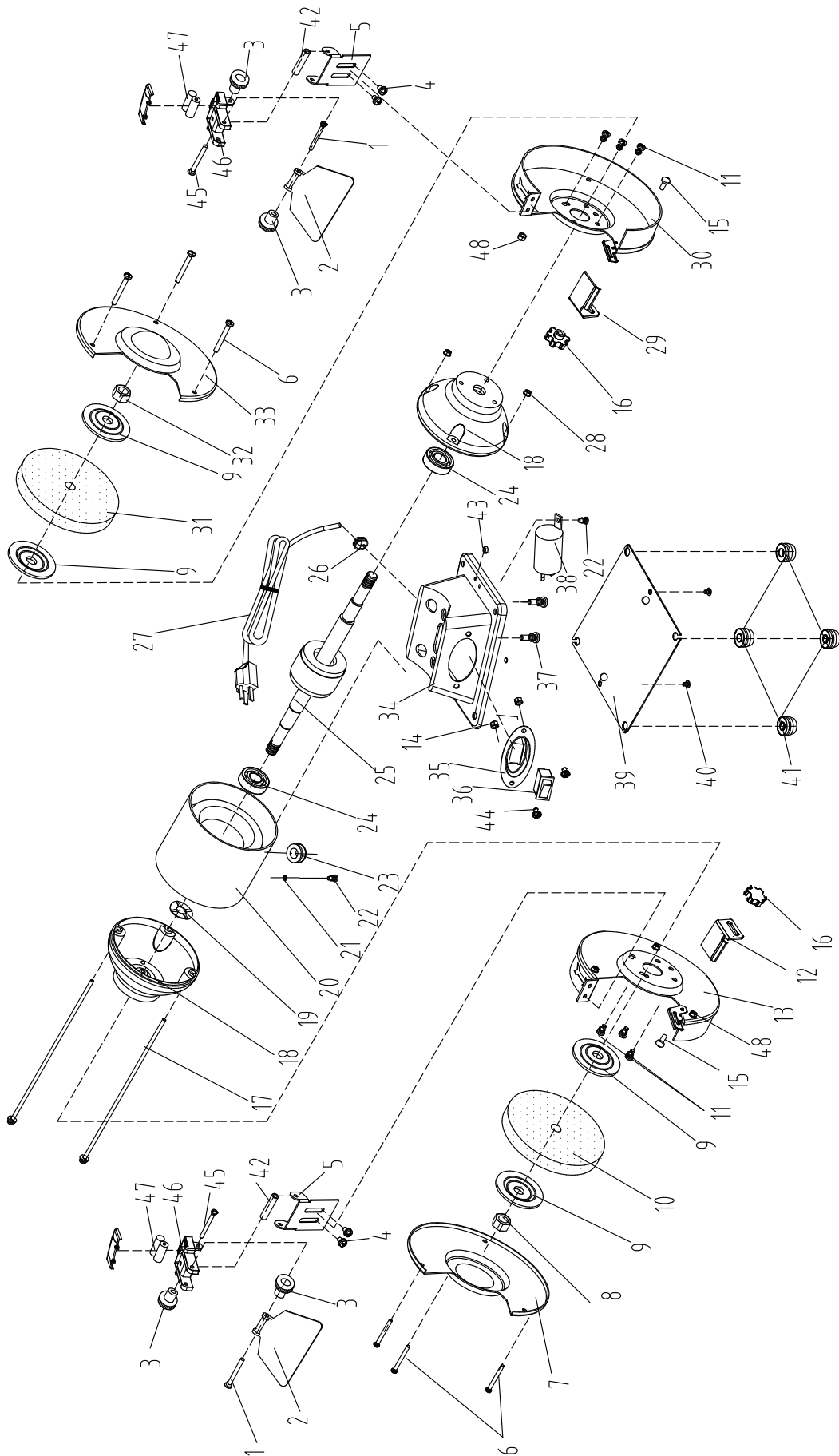
4. Power tool use and care

- a) **Do not force the power tool. Use the correct power tool for your application.** The correct power tool will do the job better and safer at the rate for which it was designed.
- b) **Do not use the power tool if the switch does not turn it on and off.** Any power tool that cannot be controlled with the switch is dangerous and must be repaired.
- c) **Disconnect the plug from the power source and/or remove the battery pack, if detachable, from the power tool before making any adjustments, changing accessories, or storing power tools.** Such preventive safety measures reduce the risk of starting the power tool accidentally.
- d) **Store idle power tools out of the reach of children and do not allow persons unfamiliar with the power tool or these instructions to operate the power tool.** Power tools are dangerous in the hands of untrained users.
- e) **Maintain power tools and accessories. Check for misalignment or binding of moving parts, breakage of parts and any other condition that may affect the power tool's operation. If damaged, have the power tool repaired before use.** Many accidents are caused by poorly maintained power tools.
- f) **Keep cutting tools sharp and clean.** Properly maintained cutting tools with sharp cutting edges are less likely to bind and are easier to control.
- g) **Use the power tool, accessories and tool bits etc. in accordance with these instructions, taking into account the working conditions and the work to be performed.** Use of the power tool for operations different from those intended could result in a hazardous situation.
- h) **Keep handles and grasping surfaces dry, clean and free from oil and grease.** Slippery handles and grasping surfaces do not allow for safe handling and control of the tool in unexpected situations.

5. Technical Data

Wheel Size	6 x 3/4 x 1/2 inch
Lamp	3 Bulbs LED Light
Motor	110 V / 60 Hz
Power	400W

6. Explode view



6. PARTS LIST

No	Name	Spec	QTY	No	Name	Spec	QTY
1	Screw	M5X55	2	26	Lead loop		1
2	Protective glass		2	27	Plug		1
3	Lens lock nut	M5	4	28	hexagon nut with flange	M4	2
4	Screw+spring washer+washer	M5X8	4	29	Right movable bracket		1
5	Protective glass holder		2	30	Right guard inner cover		1
6	Screw	M5X42	6	31	Grinding wheel	Φ150X20XΦ12.7 60#	1
7	Left shield cover		1	32	Hexagon nut	M12	1
8	Hexagon nut	M12	1	33	Right shield cover		1
9	Chuck		4	34	Base		1
10	Grinding wheel	Φ150X20XΦ12.7 36#	1	35	Switch baseplate		1
11	Screw+spring washer+washer	M5X10	6	36	Switch	HY35C	1
12	Left movable bracket		1	37	Screw+spring washer	M6X10	2
13	Left guard inner cover		1	38	Capacitor		1
14	hexagon nut with flange	M4	2	39	Galvanized partition		1
15	Bolt	M6X14	2	40	Screw+washer	M5X8	2
16	Bracket lock nut	M6	2	41	Rubber foot		4
17	Screw+washer	M4X135	2	42	Mat cover		2
18	End cap		2	43	hexagon nut with flange	M4	1
19	Corrugated spring washer	D34.5	1	44	Screw	M4X8	2
20	Stator		1	45	Screw	M5X60	2
21	Toothed washer	D4	1	46	Light assy		2
22	Screw+spring washer+washer	M4X7	2	47	AAA battery		4
23	Lead sheath		1	48	Flange nut	M5	6
24	Bearing	6202-RZ	2	49	Flange nut	M5	6
25	Rotor		1				