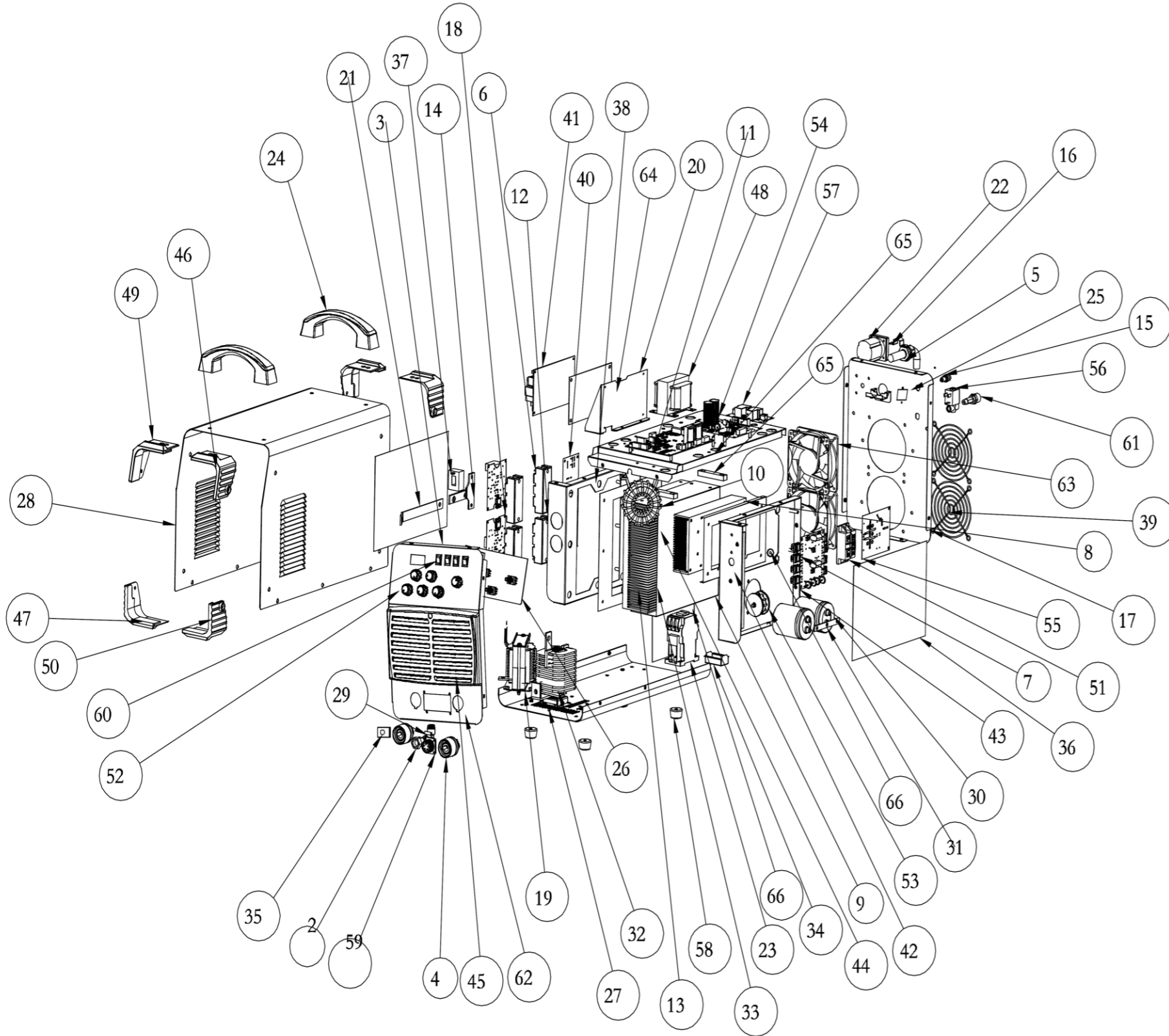


TIG375PACDC E204 EV



| No. | Part no. | Part name | Qty. |
|-----|----------|---------------------------------|------|
| 1 | 10072733 | middle clapboard | 1 |
| 2 | 10069270 | gas connector | 1 |
| 3 | 10084760 | front panel | 1 |
| 4 | 10045432 | quick socket | 2 |
| 5 | 10046154 | Cable clip | 1 |
| 6 | 10070819 | IGBT | 4 |
| 7 | 10072724 | bracket | 1 |
| 8 | 10072748 | heat sink | 1 |
| 9 | 10072721 | insulating paper | 1 |
| 10 | 10072018 | main transformer | 1 |
| 11 | 10072723 | main control board | 1 |
| 12 | 10072722 | secondary side bracket | 1 |
| 13 | 10072775 | secondary side heat sink | 1 |
| 14 | 10072771 | secondary connector | 1 |
| 15 | 10045237 | Fuse | 1 |
| 16 | 10072726 | Cable clip | 1 |
| 17 | 10084761 | rear panel | 1 |
| 18 | 10070919 | absorbing board | 2 |
| 19 | 10072379 | Arc ignition transformer | 1 |
| 20 | 10073136 | bracket | 1 |
| 21 | 10072773 | connector | 1 |
| 22 | 10073107 | switch | 1 |
| 23 | 10073949 | Contactora | 1 |
| 24 | 10046896 | handle | 2 |
| 25 | 10068600 | socket | 1 |
| 26 | 10056165 | display board | 1 |
| 27 | 10084759 | chassis | 1 |
| 28 | 10084999 | cover | 1 |
| 29 | 10064977 | quick gas connector | 1 |
| 30 | 10072246 | Capacitor | 2 |
| 31 | 10072774 | connector | 1 |
| 32 | 10071559 | Reactor | 1 |
| 33 | 10072720 | insulating plate | 1 |
| 34 | 10072798 | bracket | 1 |
| 35 | 10072773 | output connector | 1 |
| 36 | 10071578 | insulating plate | 2 |
| 37 | 10050090 | Hall sensor | 1 |
| 38 | 10072062 | gasket | 1 |
| 39 | 10007331 | fan guard | 2 |
| 40 | 10070871 | Drive Board | 1 |
| 41 | 10066623 | HF Board | 1 |
| 42 | 10072720 | insulating sheet | 1 |
| 43 | 10066501 | Primary inverter board | 1 |
| 44 | 10072719 | secondary side insulating board | 1 |
| 45 | 10047339 | louver | 1 |
| 46 | 10047349 | Front right plastic part | 1 |
| 47 | 10047352 | Rear right plastic part | 3 |
| 48 | 51001200 | power frequency transformer | 1 |

| | | | |
|----|----------|--------------------------|---|
| 49 | 10047351 | Front left plastic part | 1 |
| 50 | 10047353 | Left rear plastic part | 3 |
| 51 | 10006635 | Bridge rectifier | 1 |
| 52 | 10040930 | knob | 6 |
| 53 | 10072135 | inductor | 1 |
| 54 | 10085181 | power supply board | 1 |
| 55 | 10071855 | sampling board | 1 |
| 56 | 51000022 | solenoid valve | 1 |
| 57 | 10071851 | soft start board | 1 |
| 58 | 10016489 | rubber foot | 4 |
| 59 | 10041400 | aviation socket assembly | 1 |
| 60 | 10004938 | rocker switch | 4 |
| 61 | 51001192 | solenoid valve and wire | 1 |
| 62 | 10084763 | insulating plate | 1 |
| 63 | 10071836 | fan | 2 |
| 64 | 10073133 | HF insulating board | 1 |
