

TLT240SC

Spare parts manual

Code: 20 SHM 2113 0025A

	Drafter	Auditor	Approver
Signature	姚松林	李叔坤	
Date	2020-8-8	2020-8-10	

CONTENT

1 PURPOSE.....4

2 COMPONENT EXPLODED DIAGRAM.....4

3 COMPONENT ERP CODE AND DESCRIPTION CORRESPONDING TO EXPLODED DIAGRAM..... 10

4 WEARING PARTS.....30

Revision Records

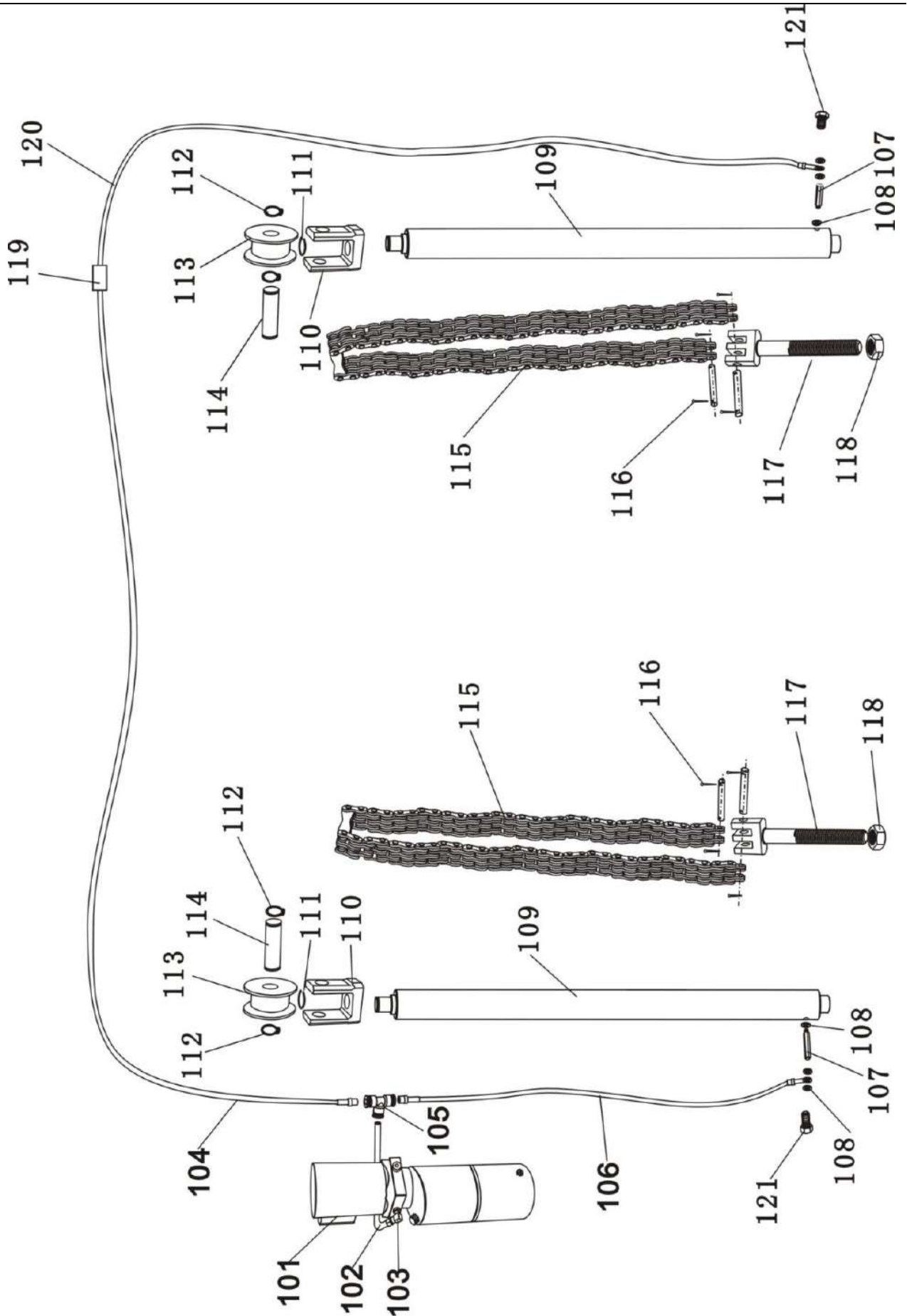
No.	Version	Revision	Reviser	Revision Date
A	A	New version	姚松林	2020-8-8
B				
C				
D				
E				
F				
G				
H				
I				
J				
K				
L				
M				
N				
O				
P				
Q				
R				
S				

1 Purpose

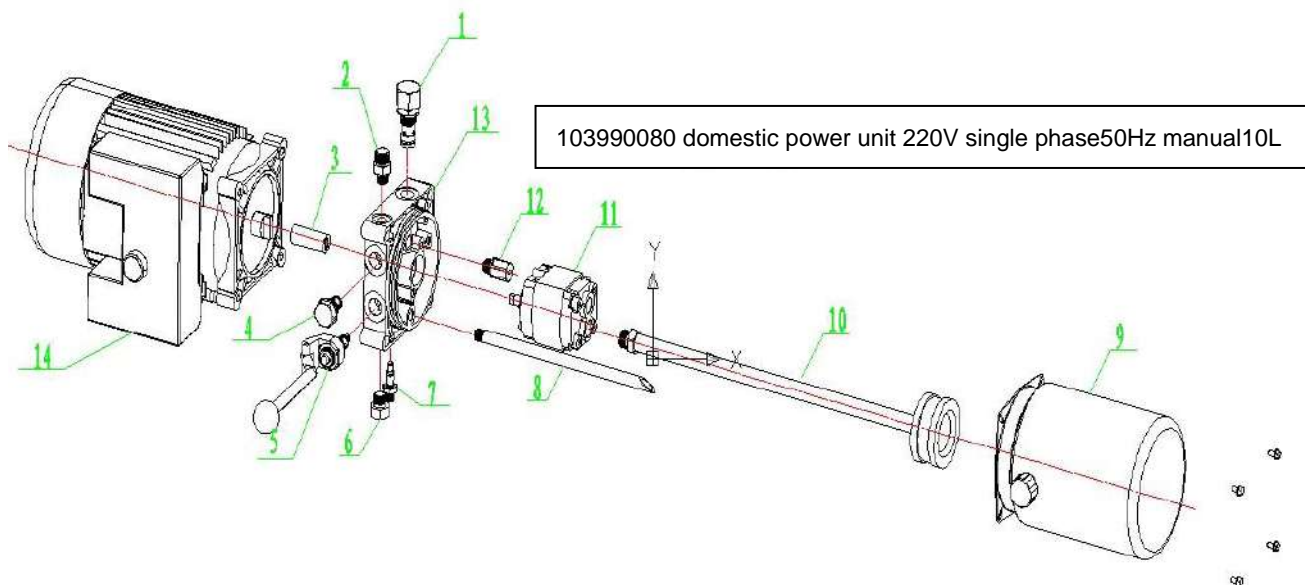
This manual is used as an effective customer's access to the specific description of lift model's spare parts and their first-hand change information, in order to resolve the problem of product modification and code switch by which customers have been troubled, make the communication between customer and company's service personnel smoother, improve company's service efficiency and increase customer trust!

2 Component Exploded Diagram

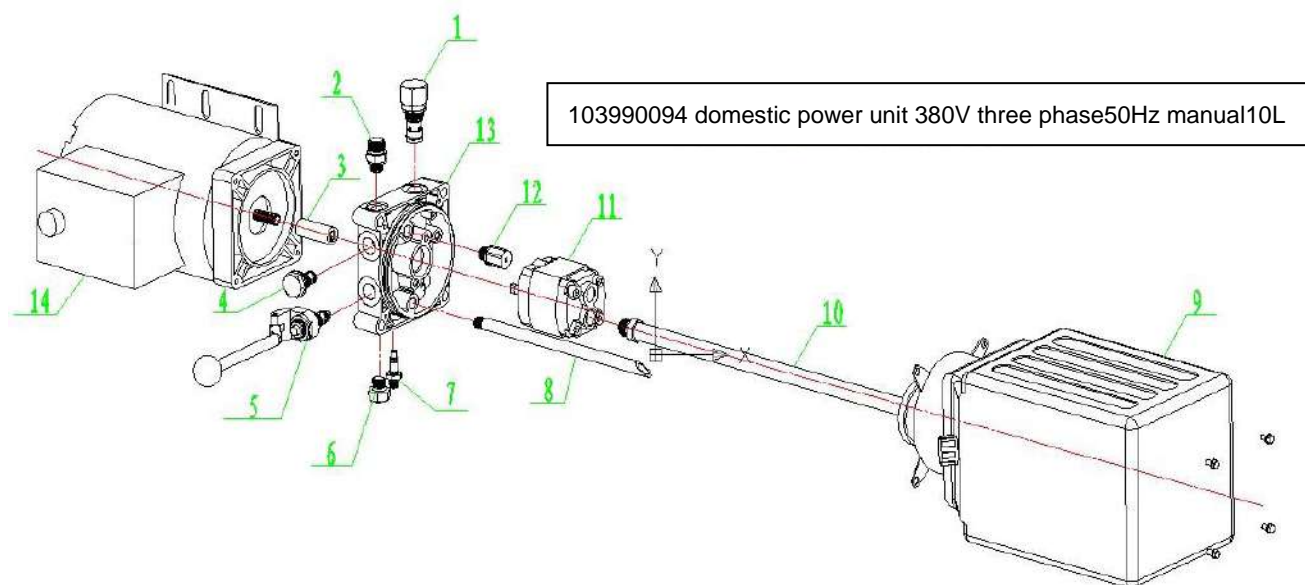
2.1 Power unit and Cylinder assembly



2.1.1 Power unit assembly



103990080 domestic power unit 220V single phase 50Hz manual 10L

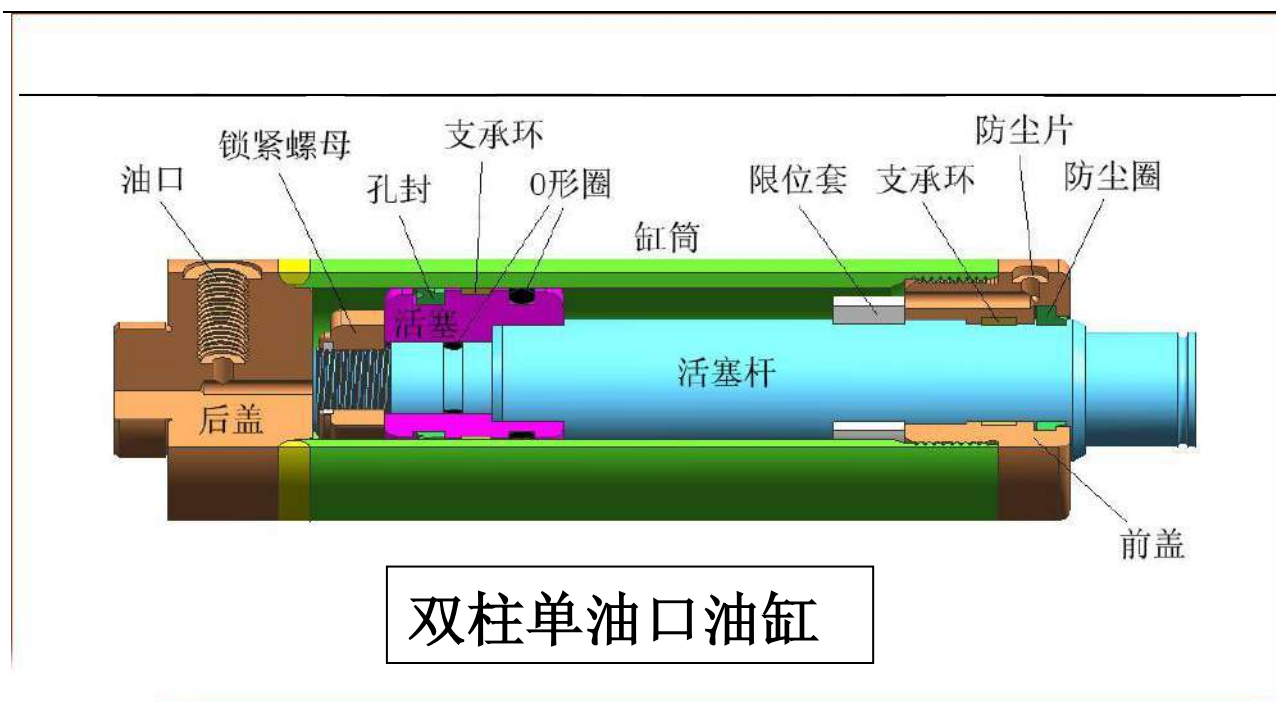


103990094 domestic power unit 380V three phase 50Hz manual 10L

Note: Types of the Power unit that TLT240SC used are as below:

103990080 domestic power unit 220V single phase 50Hz manual 10L
103990365 domestic power unit 220V single phase 50Hz、 with AC contactor , manual 10L
103990094 domestic power unit 380V three phase 50Hz manual 10L
103990270 domestic power unit 380V three phase 50Hz manual 10L, without button
103990271 domestic power unit 220V single phase 50Hz manual 10L, without button
103990272 domestic power unit 380V three phase 50Hz manual, iron tank 10L

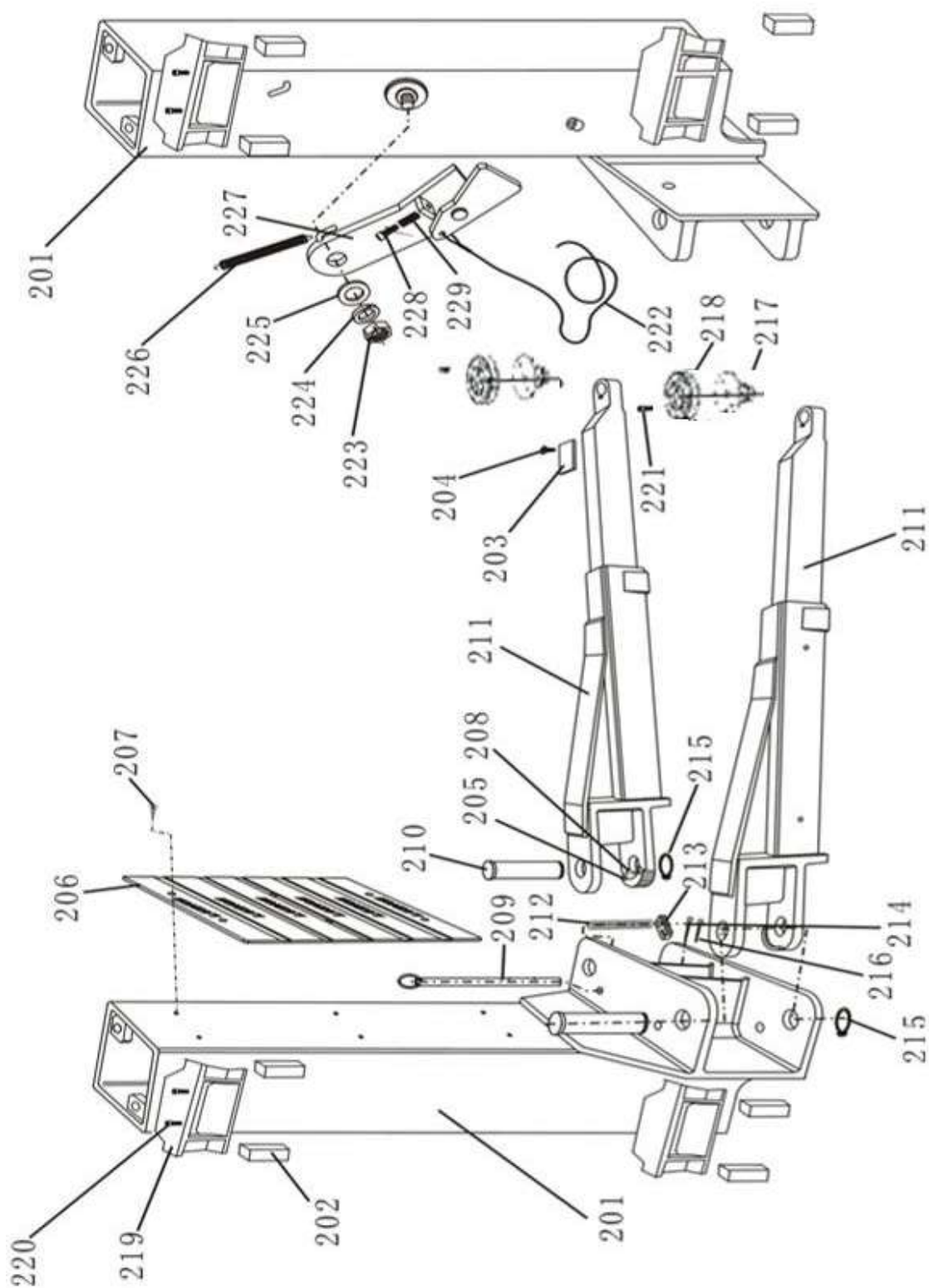
2.1.2 Cylinder assembly



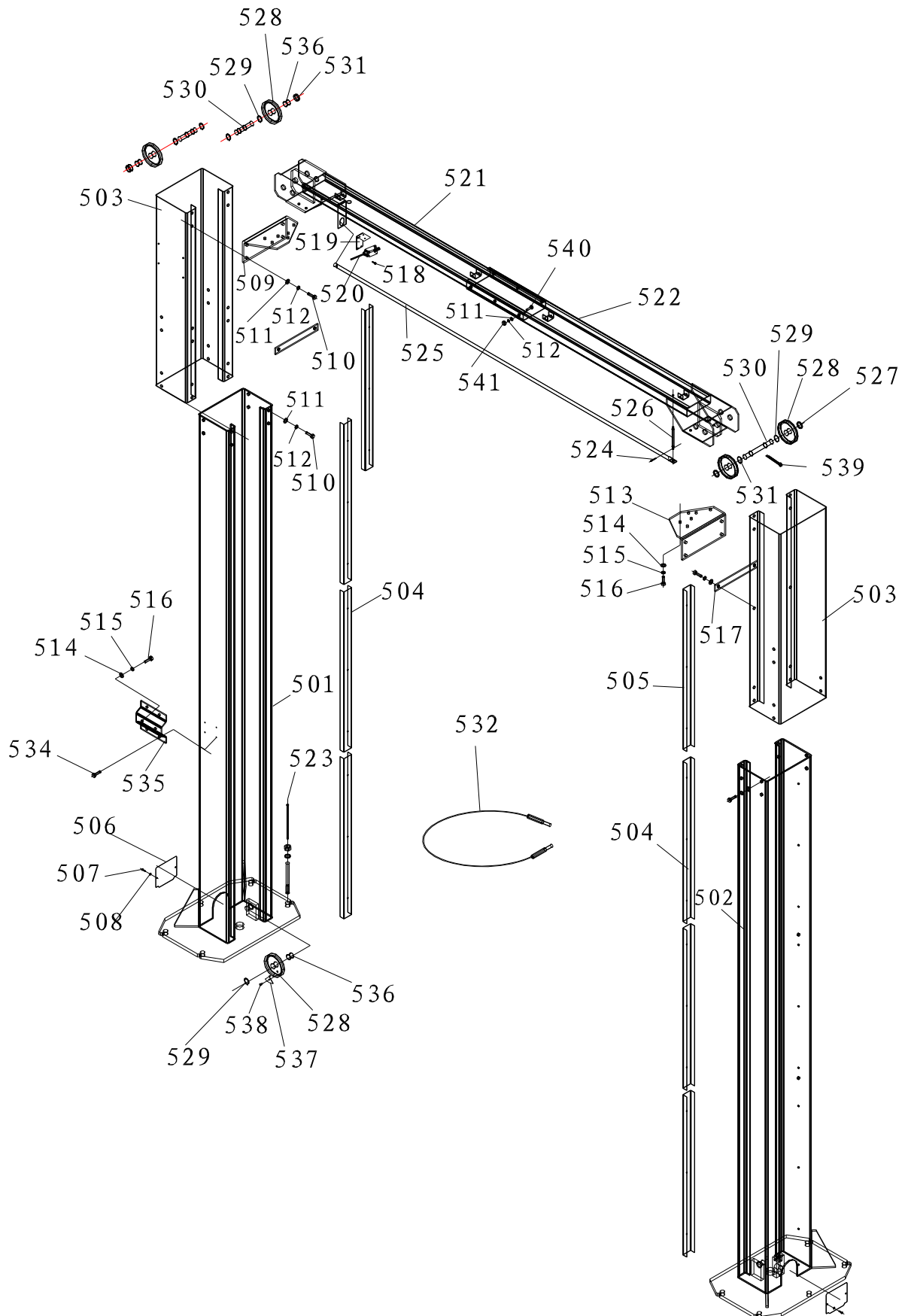
Note: Types of the Cylinder that TLT240SC used are as below:

103260129 TLT235SB Slave cylinder for two post lift

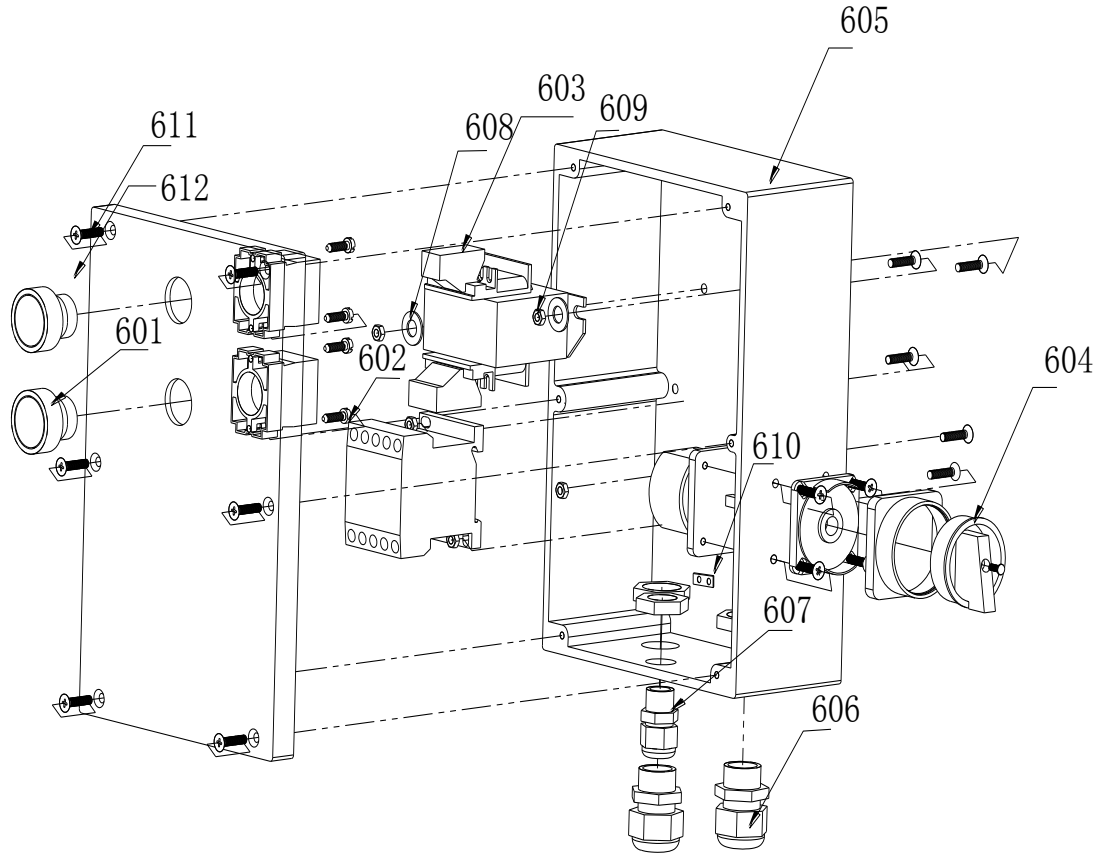
2.2 Carriage and Arm assembly





2.3 Power-side column and Offside column assembly



2.4 Control box assembly




3 Component ERP code and description corresponding to exploded diagram

Number	Material Code	Description	Photo	Note	For SN
101	Optional (according to different configuration)	Power unit (Manual)			
102	104120207	HP Hose L=680			

103	103100170	Fitting M14×1.5 (For domestic power unit)			
	103100171	Fitting G1/4" (For imported power unit)			
104	104120096	HP hose L=5370			
	104120184	HP hose L=4770			Tubing for low grade installation
105	103100172	T fitting			
106	104120116	HP hose L=930mm			
107	103100257	Fitting			
108	103040157	Seal gasket 14			

109	103260129	Slave cylinder			
	201026059	Sheave Parts			
110	103203472	Sheave seat			
111	104060016	Retaining ring 32			
112	103050014	Retaining ring 30			
113	103201950	Sheave			
	103260098	Bushing 3052			
114	103201883	Sheave axle			

115	103200939	Steel chain			
116	103060340	Cotter pin 2x26			
117	103200938	Chain threaded end			
118	103030131	Nut M16			
119	103100198	Fitting			
120	104120118	Offside column HP hose L=4250mm			
121	103020166	Connecting bolt			
1	103160059	Overflow valve (pressure adjustment range 0-30MPa			

2	103100170	Fitting			
	103100171	Fitting G1/4" (for imported pump station)			
3	103990243	Coupler (220V) for aluminum alloy motor			
	103201714	Coupler (220V) for plate motor			
	103203539	Couple (DL,L=55)			NEW
4	103160056	Check valve			
5	103160055	Manual unloading valve			

6	103203228	Plug screw			
7	103160123	Throttle valve			
8	103202057	Oil outlet pipe (Stamp : DFY/EAST)			
	104090106	Oil inlet pipe (Stamp : DL)			
9	103201882	Iron oil reservoir 10L (Stamp : DF/DFY/ZY)		The installation hole spacing is small 	OLD and 103990088 is NEW
	104100022	oil reservoir 10L(steel, DFY/EAST)		The installation hole spacing is large 	NEW
	104100009	Plastic oil reservoir 10L (DFY)			OLD

	104100020	Plastic oil reservoir 10L(DY Without iron hoop)			NEW
	104090105	Plastic oil reservoir 10L (DL)			
10	103202057	Oil inlet pipe (Stamp : DFY/EAST)			
	104090106	Oil inlet pipe (Stamp : DL)			
11	103990219	Gear pump			
12	103160111	Cushion valve			
13	103160098	Valve block holder			


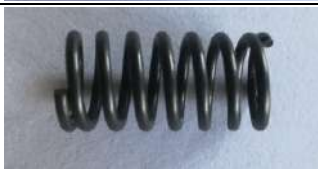



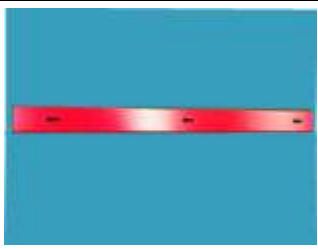
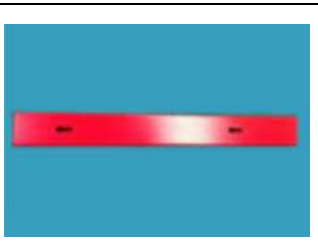

	103160133	Valve block holder (EAST)			NEW
	103160125	Valve block holder (DL)			
14	103990224	Motor 220V single phase			
	103990392	Steel motor 220V50HZ single phase (DFY/EAST)			
	102990266	Motor 380V three phase (DL)			
	103990222	Motor 380V three phase (DFY)			
	102100229	Button of pump station with plate motor			

	102100228	Button of pump station with aluminum alloy motor			
	102110084	Contactor for 380V pump station			
	102110112	Contactor for 220V pump station			
201	201021322	TLT235SC carriage			
	201020582	Carriage assembly			
202	104990132	Sliding block			
	103202958	Sliding block shim (for adjustment)			
203	104130186	Rubber pad on arm			

204	103010608	Screw M6x10			
205	103201771	Semi-gear		103202032 is not used any more	
206	104130191	Door rubber pad			
	104130192	Door rubber pad			
207	103010539	Screw M8x12			
208	103011102	Screw M10x25			
209	103202184	Top rod assembly			
210	103202280	Pin axle			
211	201024669	Arm			
	201020501	Arm assembly			

212	103201914	Spring			
213	103201744	Gear block			
214	103060376	Pin 5X32			
215	103050030	Retaining ring 40			
216	103060355	Cotter pin 3.2x30			
Twin-s crew	201020499	lifting pad assembly			
217	103201444	Lifting pad assembly			
218	104130189	Rubber pad			

	201025138	Top cover for TLT240SC			
	103020231	Screw M10x20			
221	103010402	Screw M8x16			
222	201020500	Steel cable for safety release			
223	103030131	Nut M16			
224	103040159	Spring washer16			
225	103040136	Flat washer 16			
226	103110061	Pull spring			
227	103202345	Safety plate assembly			

228	103010471	Screw M8x40			
229	103110060	Push spring			
501	201025104	TLT235SC power side column			
502	201025105	TLT235SC power side column			
503	201025112	TLT240SC Extension column			
504	201025073	Protective cover inside the column			
505	201025074	Protective cover for extension column			
506	201011236	Bottom cover of the column			

507	103010498	Screw M5x8			
508	103040132	Washer 5			
509	201025066	Connecting bracket I			
510	103020104	Bolt M12x35			
511	103040110	Flat Washer 12			
512	103040044	Spring washer 12			
513	201025067	Connecting bracket II			
514	103040123	Flat Washer 10			

515	103040122	Spring washer 10			
516	103020038	Bolt M10x20			
517	201011176	Reinforced bracket			
518	103010429	Screw M4x25			
	103010426	Screw M4x12			
519	103201545	Bracket			
520	102100075	Limit switch			
	105990008	Limit switch(with wire)			



521	201025069	Inner top beam			
522	201025070	Outer top beam			
	201020585	Top beam assembly (parted)			With long rod and cover
523	103020123	Anchor Bolt M18x160			
524	103060342	Pin3X26			
525	103250270	Long rod , steel pipe $\phi 20 \times 0.6$		 	
	104130196	sheath (Inner hole $\Phi 22$), L=1.8m			
526	103203197	Support pin for long bar			
527	103203325	Bushing II			
	104991298	Bushing II, nylon 66			

528	103203017	Pulley			
529	103050035	Retaining ring 25			
530	103200967	Symmetric axle			
	103200966	Asymmetric axle			Optional
531	103203324	Bushing I			
	104991297	Bushing I, nylon 66			
532	103260398	Steel cable L=10596			
	103260374	Steel cable L=9996			Low grade

534	103020190	Screw M6×10			
535	201025083	TLT240SC Power unit bracket			
536	103200699	Bush 2520			
537	103203019	lateral position plate			
538	103020188	Six angle flange bolt M5*10			
539	103060349	Cotter pin5*40			
540	103020126	Bolt M12*25			
541	103030129	Nut M12			
601	102100074	Button NB2-BE101 , green			

602	102110059	Contactor (shilin) ,S-P11,A C24V			
603	102130043	Transformer JBK-25,220V,380 V/24V			
604	102990109	Power switch LW39B-16RE04/- 2-GR (small)			
605	104090089	Waterproof box 240*160*90 , (black)			
	103990316	380V button box			
	103990315	220V button box			
606	102160391	Cable joint PG13.5			
607	102160388	Cable joint PG9			

608	103040109	Flat washer Class C GB/T95-1985,φ4 (White-zinc plated)			
609	103030009	Hex nut GB/T6170-2000 , M4(White-zinc plated)			
610	103240319	Ground copper bar			
611	103010286	Screw M4*20			
612	102100090	Emergency stop button LA39-11Z/r			
Addition	107021639	Warning stickers (English)			
Addition	107021415	Warning label (English)			
Addition	105022205	Línea de límite 4M			

Addition	103990277	Service kit for hydraulic cylinder sealing ring(X C)			
Addition	103990278	Service kit for hydraulic cylinder sealing ring (JY)			

4 Wearing Parts

103100170	Fitting M14×1.5 for domestic power unit
103100171	Fitting G1/4" (for imported power unit)
103100172	T Fitting
103100198	Fitting
103040157	Seal gasket 14
103260129	Slave cylinder
103990277	Cylinder seal gasket service kit (XC)
103990278	Cylinder seal gasket service kit (JY)
103201950	Sheave
103260098	Bush 3052
103160059	Overflow valve (pressure adjustment range 0-30MPa)
103160056	Check valve
103160055	Manual unloading valve
103160123	Throttle valve
103160111	Cushion valve
104990132	Sliding block
104130186	Rubber pad on arm
104130189	Fitting M14×1.5 for domestic power unit
201020500	Steel cable for safety release
105990008	Limit switch
103203017	Pulley

103200699	Bush 2520
103260398	Steel cable
102100229	Button of pump station with plate motor
102100228	Button of pump station with aluminum alloy motor
102100074	Button NB2-BE101, green
102100090	Emergency stop button LA39-11Z/r
102110084	Contactora for 380V pump station CJX2-1210
102110112	Contactora for 220V pump station

List for 103990088 (ZY) 220V single phase 60HZ manual 10Lpump station

103160127	Pump safety valve (ZY)
103990393	coupling (ZY)
103160128	Check valve (ZY)
103160129	Manual unloading valve (ZY)
103160130	Throttling valve (ZY)
104091334	Oil outlet pipe
103201882	oil drum 10L(Steel)
103209063	Oil inlet pipe (With screen) (ZY)
103990394	Gear pump CBK-F211 (ZY)
103160131	Cushion valve (ZY)
103160132	Valve block holder (ZY)
103990395	Pump station 220V single-phase 60HZ(For manual ZY pump station only, with button box) (ZY)
103020218	Bolt M5*10 (ZY)
102040222	Start capacitor 300 μ F,250VAC (ZY)
102040223	Stable capacitor 80 μ F,450VAC (ZY)
103260376	Pump handle (ZY)
104091335	Button box cover (ZY)
102110109	Contactora CJX2-18 10/32A (ZY)