

# TLT240SB

## Spare parts manual

NO.: 20 SHM 2113 0002 A

---

	Drafter	Auditor	Approver
Signature	姚松林	李叔坤	
Date	2020-6-25	2020-6-26	

## CONTENT

1	PURPOSE.....	4
2	COMPONENT EXPLODED DIAGRAM .....	4
3	COMPONENT ERP CODE AND DESCRIPTION CORRESPONDING TO EXPLODED DIAGRAM .....	10
4	WEARING PARTS.....	27

## Revision records

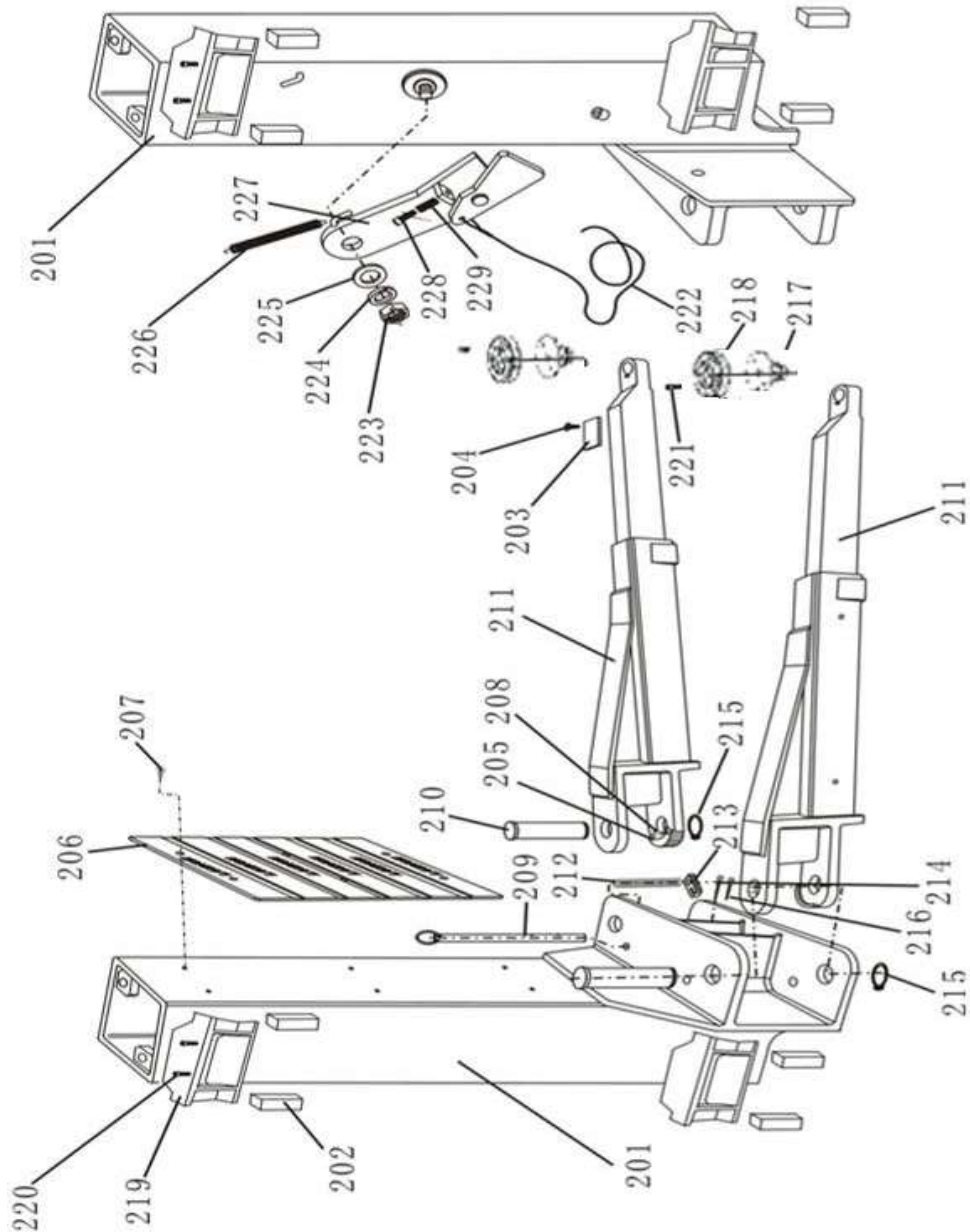
No.	Version	Revision	Reviser	Date
A	A	New version	姚松林	2020-6-25
B				
C				
D				
E				
F				
G				
H				
I				
J				
K				
L				
M				
N				
O				
P				
Q				
R				

## 1 Purpose

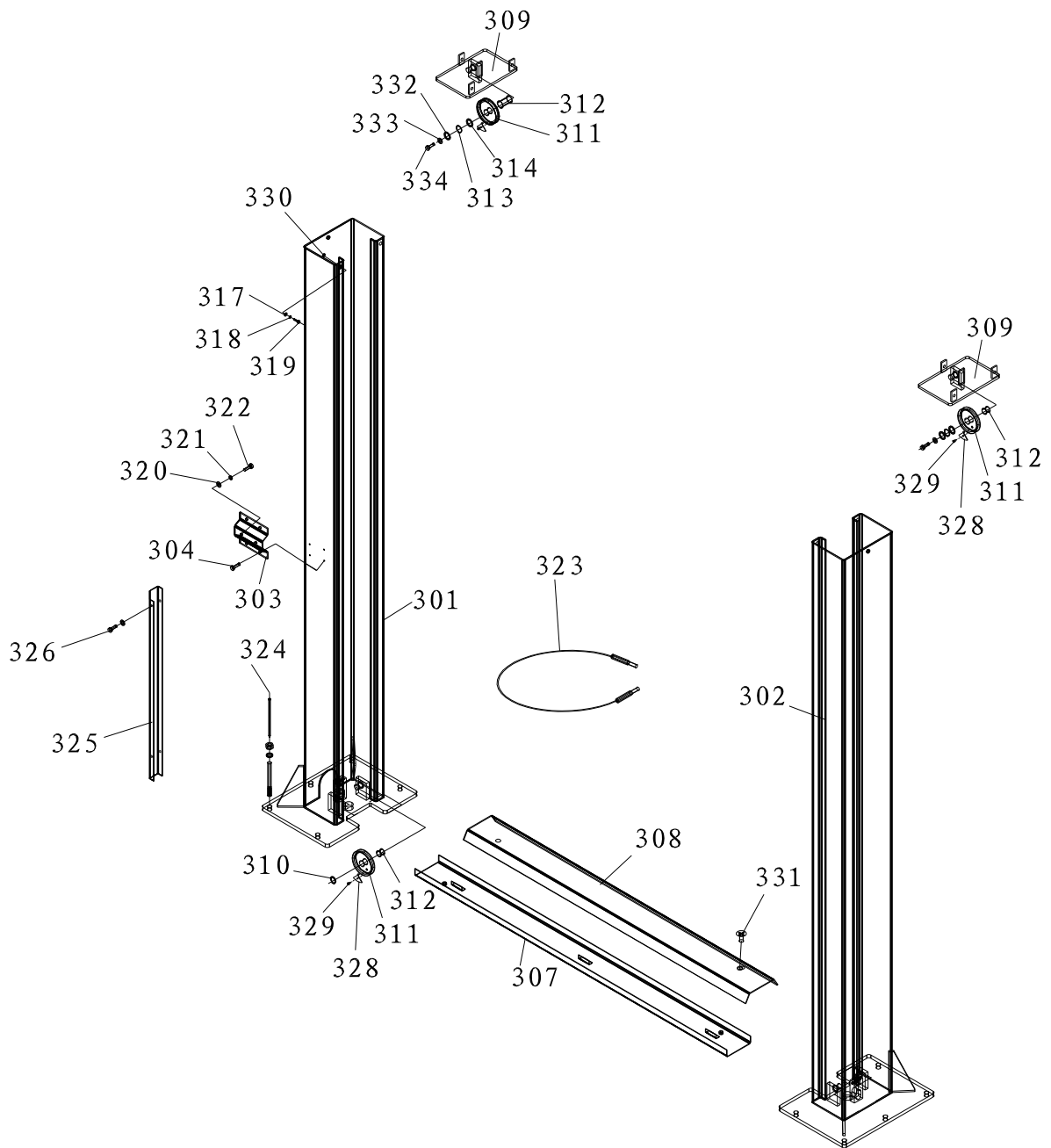
This manual is used as an effective customer's access to the specific description of lift model's spare parts and their first-hand change information, in order to resolve the problem of product modification and code switch by which customers have been troubled, make the communication between customer and company's service personnel smoother, improve company's service efficiency and increase customer trust.

## 2 Component Exploded Diagram

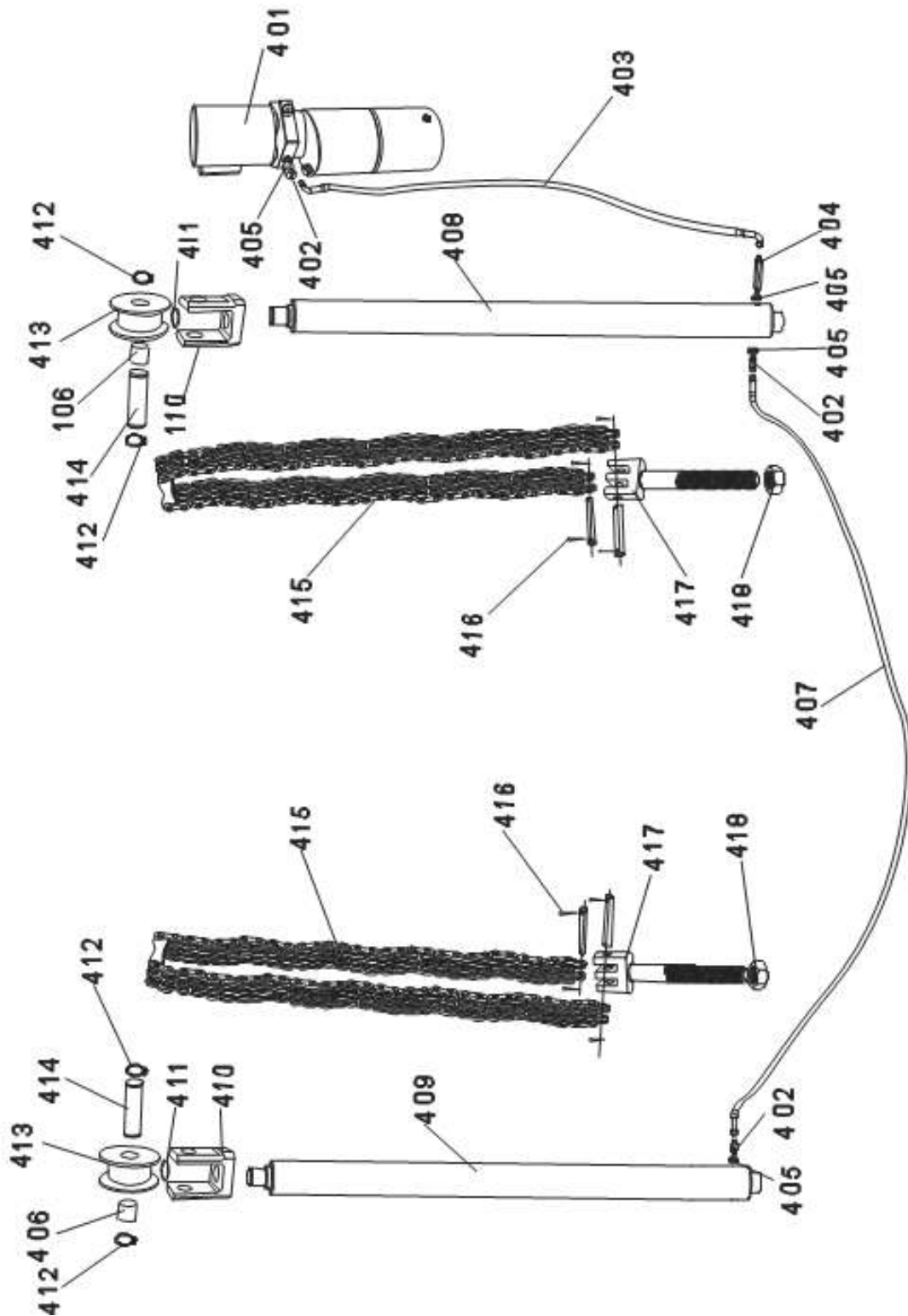
### 2.1 Carriage and Arm assembly



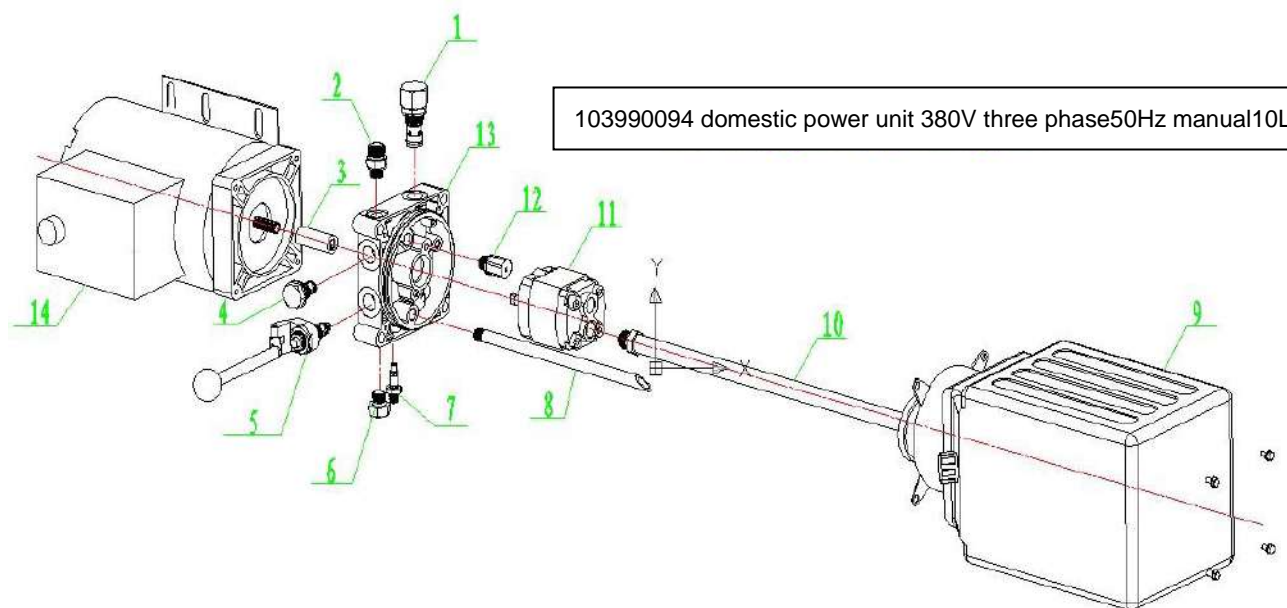
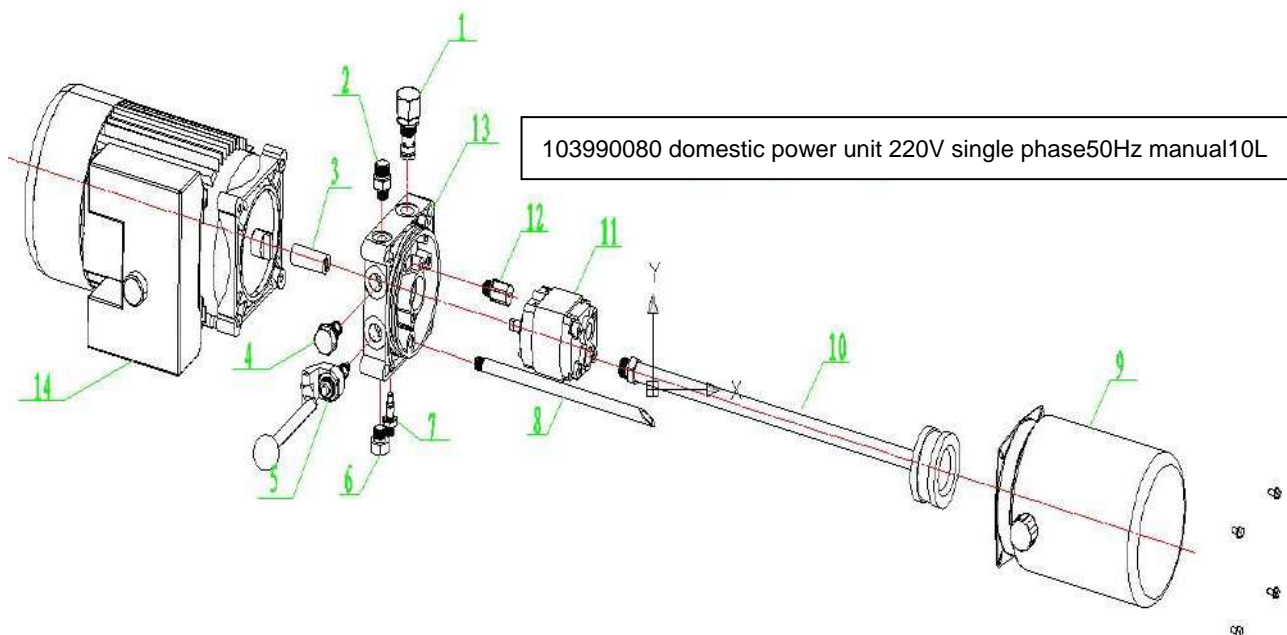
## 2.2 Power-side column and Offside column assembly



### 2.3 Power unit and Cylinder assembly



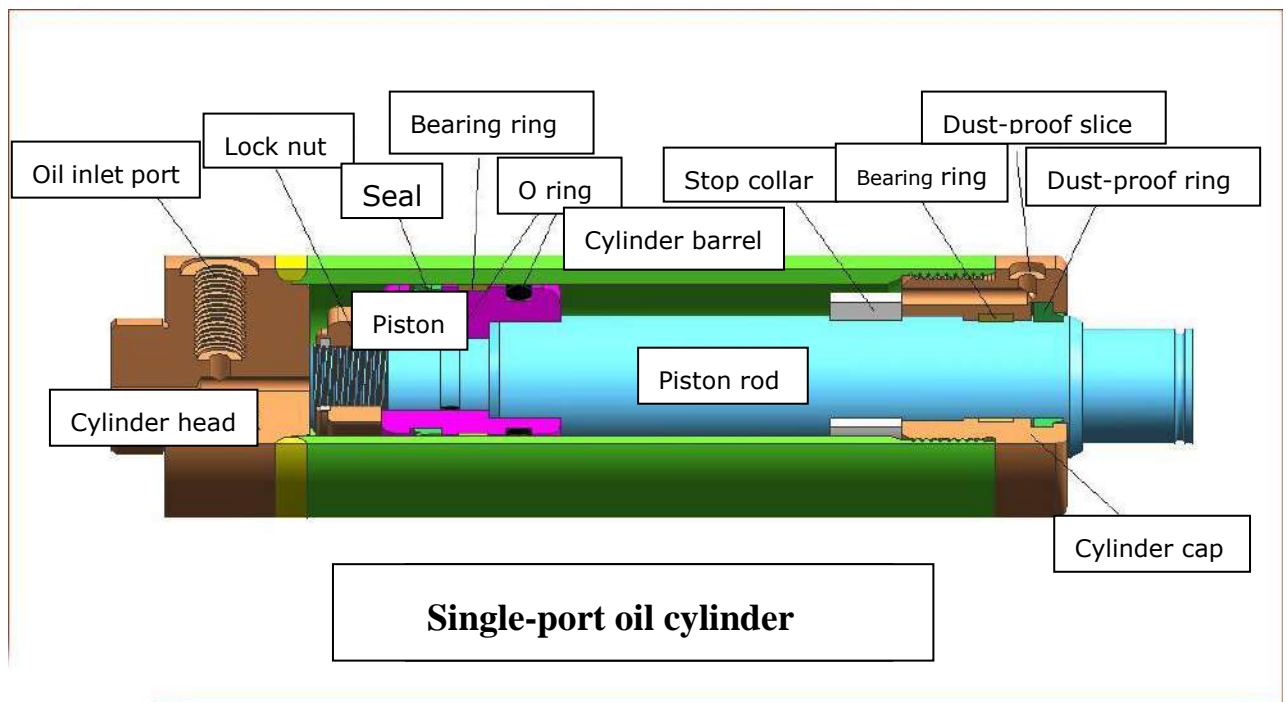
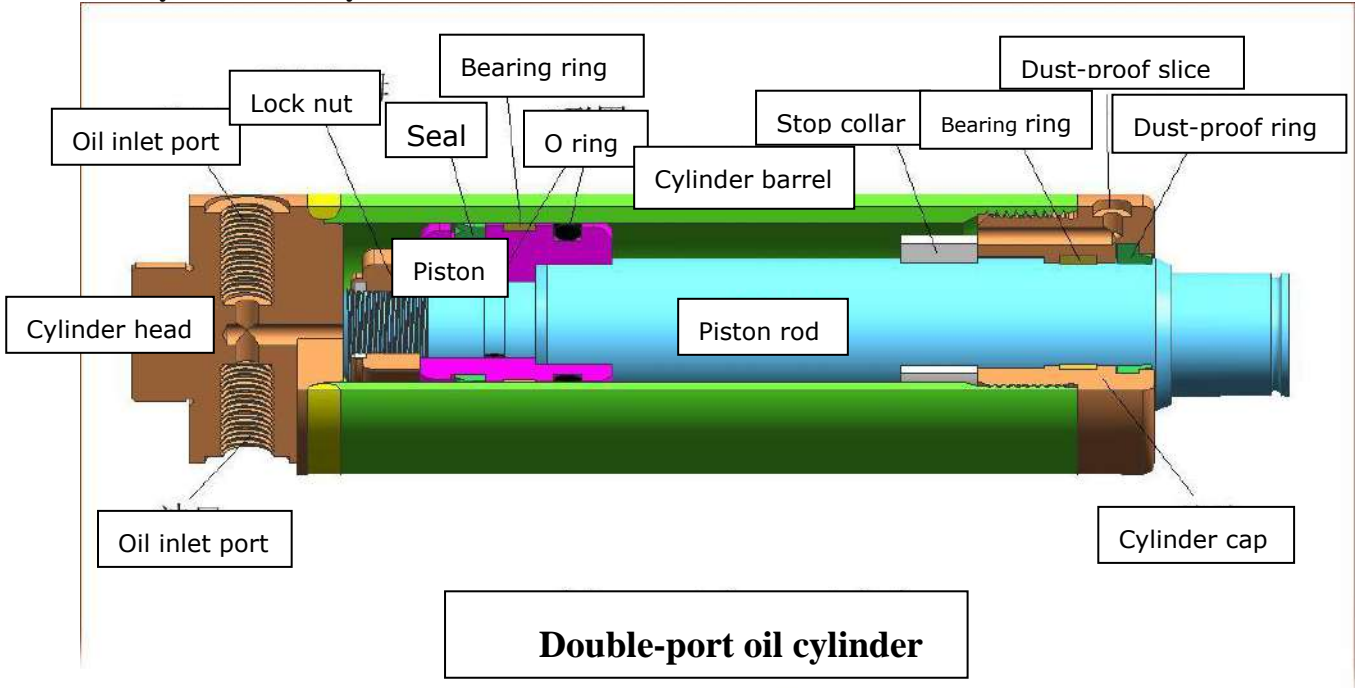
2.3.1 Power unit assembly



**Note: Types of the Power unit that TLT240SB used are as below:**

103990080 domestic power unit 220V single phase50Hz manual10L
103990094 domestic power unit 380V three phase50Hz manual10L
103990166 domestic power unit 220V three phase60Hz manual10L
103990270 domestic power unit 380V three phase50Hz manual10L, without button
103990271 domestic power unit 220V single phase50Hz manual10L, without button
103990272 domestic power unit380V three phase50Hz manual, iron tank 10L
103990365 domestic power unit220V single phase 50Hz、 with AC contactor, manual10L

2.3.2 Cylinder assembly

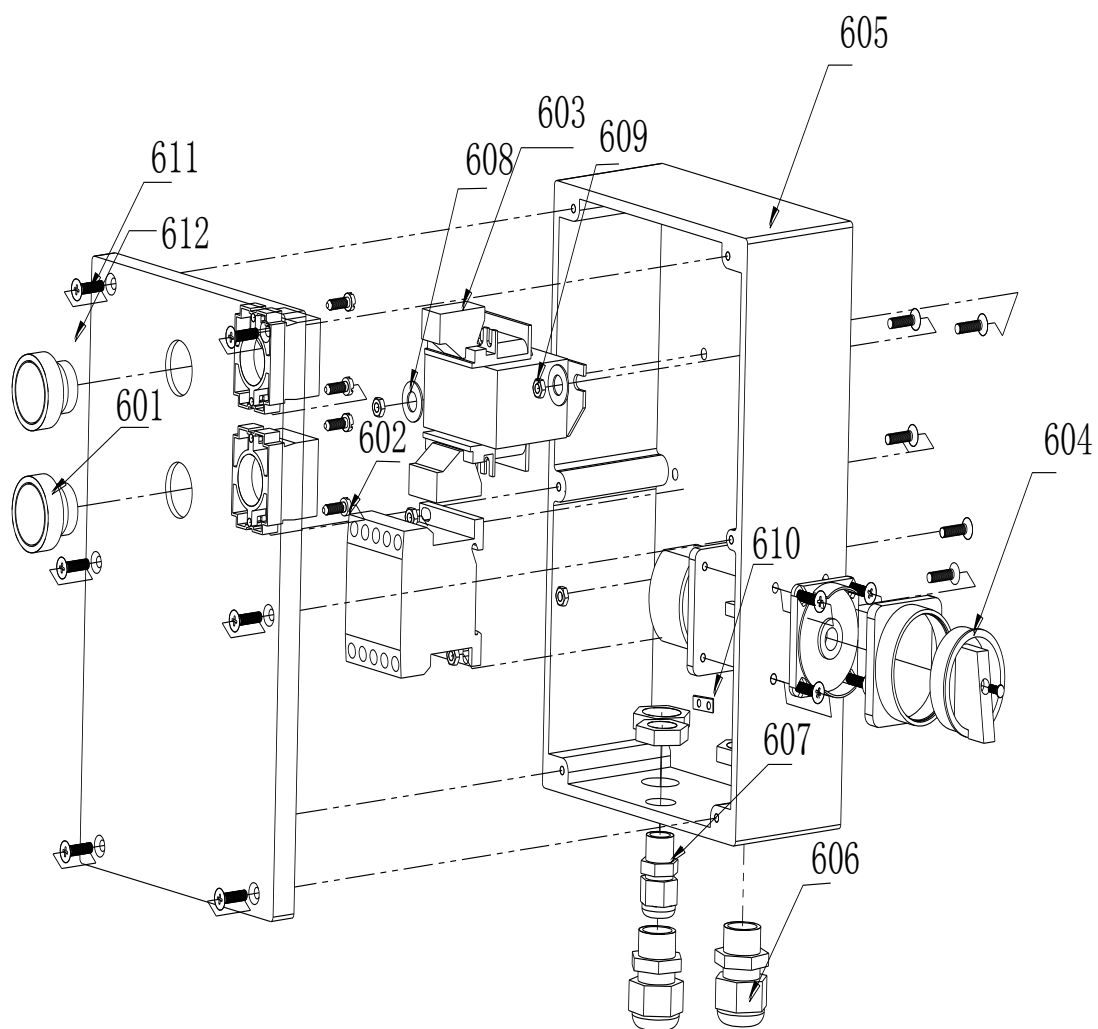


**Note:** Types of the Cylinder that TLT240SB used are as below:

103260123 TLT235SB Main cylinder for two post lift
103260129 TLT235SB Slave cylinder for two post lift



## 2.4 Control box assembly



### 3 Component ERP code and description corresponding to exploded diagram

Number	Material Code	Description	Photo	Note	For SN
201	201021321	NEW: TLT240SB carriage			
201	201020385	carriage assembly			
202	104990132	Sliding block			
	103202958	Sliding block shim (for adjustment)			
203	104130186	Rubber pad on arm			
204	103010608	Screw M6x10			

205	103201771	Semi-gear		103202032 cannot be use anymore	
206	104130191	Door rubber pad			
206	104130192	Door rubber pad			Neutral without LAUNCH logo
207	103010539	Screw M8x12			
208	103011102	Screw M10x25			
209	103202184	Top rod assembly			
210	103202280	Pin axle			
211	201024669	Swing arm			
211	201020501	Swing arm assembly			
212	103201914	Spring			

213	103201744	Gear block			
214	103060376	Pin 5*32			
215	103050030	Retaining ring 40			
216	103060355	Cotter pin 3.2x30			
217	103201444	lifting pad assembly			
218	104130189	Rubber pad			Standard
218	104130211	Rubber pad			Neutral without LAUNCH logo
<b>Twin screw</b>	201020499	lifting pad assembly			

219	201025138	TLT235SB Top cover			
220	103020231	Screw M10*20			
221	103010402	Screw M8x16			
222	201020500	Steel cable for safety release			
223	103030131	Nut M16			
224	103040159	Spring washer 16			
225	103040136	Flat washer 16			
226	103110061	Pull Spring			
227	103202345	Safety plate assembly			










228	103010471	Screw M8x40			
229	103110060	Push Spring			
301	201024751	Push Spring			OLD: The cover installing hole is on the side.
302	201024750	NEW:Offside column			OLD: The cover installing hole is on the side.
303	201025083	Old : Power unit bracket			
304	103020190	Screw M6x10			
307	201025072	Floor plate			
308	201025071	Floor plate cover			

	201024763	Top cover assembly			
309	201024764	Top cover			
310	103050035	Retaining ring 25			
311	103203017	Pulley			
312	103200699	Retaining ring 25			
313	103050031	Retaining ring 25			
314	103040176	TLT235SB washer			

317	103040110	Flat washer 12			
318	103040044	Spring washer 12			
319	103020104	Bolt M12x35			
320	103040123	Flat washer 10			
321	103040122	Spring washer 10			
322	103020038	Bolt M10x25			
323	103260399	Steel cable			
324	103020123	Anchor Bolt M18x160			
325	201010083	Cable cover plate			






326	103010432	Screw M5X12			
328	103203019	Lateral positioning plate			
329	103020188	Six angle flange bolt M5*10			
330	103030129	Nut M12			
331	103010463	Screw M12*35			
332	103050037	Ring			
333	103040141	Spring washer 8			
334	103020116	Bolt M8*16			
401	103990080	220V50HZ pump station with alufer motor			OLD

	103990080	220V50HZ pump station with alufer motor			According to the configuration of the machine
	103990365	220V50HZ pump station with steel motor			According to the configuration of the machine
	103990094	380V50HZ pump station			According to the configuration of the machine
402	103202194	fitting			
	103100170	Straight joint			FOR DOMESTIC PUMP
	103100171	Joint G1/4" (for Imported pump station)			For Imported pump station
403	104120076	HP hose L=1240mm			
404	103100140	Long fitting			Standard
	103100324	Flow-control fitting			Optional

405	103040157	Seal gasket 14			
406	103260098	Bush 3052			
407	104120079	HP hose L=2775mm			
408	103260123	Main cylinder			
409	103260129	Slave cylinder			
410	103203472	Sheave seat			
	201026059	Sheave Parts			
411	104060016	Retaining ring 32			

412	103060349	Pin5*40			
413	103201950	Sheave			
414	103203736	Sheave axle			
415	103200939	Steel chain			With 416 Cotter pin 2*26
416	103060340	Cotter pin 2x26			
417	103200938	Chain threaded end			
418	103030131	Nut M16			
1	103160059	Overflow valve (pressure adjustment range 0-30MPa)			
2	103100170	Straight fitting			

3	103990243	Coupler (220V) for alufer motor			
3	103201714	Coupler (380V/220) (DFY) for steel motor			45mm
	103203539	Coupler (DL,L=55)			55mm
4	103160056	Check valve			
5	103160055	Manual unloading valve			
6	103203228	Plug screw			
7	103160123	Throttle valve			

8	103202057	Oil outlet pipe (Stamp: DFY/EAST)			
	104090106	Oil inlet pipe (Stamp: DL/BH)			
9	103201882	Iron oil reservoir 10L		Narrow pitch-row 	Old style DY and 1039900 88ZY new style
	104100022	Oil reservoir 10L(steel、 DY/EAST)		Broader pitch-row 	New
	104100009	Plastic oil reservoir 10L (DFY)			OLD
	104100020	Plastic oil reservoir 10L (DY /EAST Without iron hoop)			NEW
	104090105	Plastic oil reservoir 10L (DL/BH)			
10	103202057	Oil inlet pipe (Stamp: DFY/EAST)			

	104090106	Oil inlet pipe (Stamp: DL/BH)			
11	103990218	Oil inlet pipe (Stamp: DFY/EAST)			
12	103160111	Cushion valve			
	103160098	Valve block holder (DFY/EAST)			Old
13	103160133	Valve block holder (EAST)			New
	103160125	Valve block holder (DL/BH)			
14	103990224	Alufer motor 220V50HZ single-phase (DFY/EAST)			



	103990392	Steel motor 220V50HZ single-phase (DFY/EAST)			
	102990266	Motor 380V three-phase (DL)			
	103990222	Motor 380V three-phase (DFY/EAST)			
	102100229	Button of pump station with plate motor			
	102100229	Button of pump station with plate motor			After improve ment
	102100228	Button of pump station with alufer motor			
	102110084	Contactor for 380V pump station			



	102110112	Contactor for 220V pump station			
601	102100074	Button NB2-BE101, green			
602	102110059	Contactor (shilin), S-P11, A C24V			
603	102130043	Transformer JBK-25, 220V, 380V/24V			
604	102990109	Power switch LW39B-16RE04/-2-GR (small)			
605	104090089	Waterproof box 240*160*90, (Black)			
	103990316	380V Button box assembly			
	103990315	220V Button box assembly			

606	102160391	Cable joint PG13.5			
607	102160388	Cable joint PG9			
608	103040109	Flat washer Class C GB/T95-1985,φ4( White-zinc plated)			
609	103030009	Hex nut GB/T6170-2000, M4(White-zinc plated)			
610	103240319	Ground copper bar			
611	103010286	Screw M4*20			
612	102100090	Emergency stop button LA39-11Z/r			
Addition	107021639	Warning stickers (English)			
Addition	107021415	Warning label (English)			

Addition	104090059	Decorative top cover			
Addition	103990277	Service kit for hydraulic cylinder sealing ring (XC)			
Addition	103990278	Service kit for hydraulic cylinder sealing ring (JY)			

#### 4 Wearing parts

104990132	Sliding block
104130186	Rubber pad on arm
104130189	Rubber pad
201020500	Steel cable for safety release
103203017	Pulley
103200699	Bush 2520
103260399	Steel cable
103202194	Straight fitting
103100324	Long fitting
103040157	Seal gasket 14
103260123	Main cylinder
103260129	Slave cylinder
103990277	Cylinder seal gasket service kit (XC)
103990278	Cylinder seal gasket service kit (JY)
103201950	Sheave
103260098	Bush 3052
103160059	Overflow valve (pressure adjustment range 0-30MPa)
103160056	Check valve
103160055	Manual unloading valve
103160123	Throttle valve
103990218	Gear pump

103160111	Cushion valve
102100229	Button of pump station with steel motor DY
102100228	Button of pump station with alufer motor DY
102100230	380V pump station for DL
102110084	New domestic manual power unit 380V50Hz with large ac contactor,CJX2-1210
102040227	Start capacitor, 100 $\mu$ F,330VAC; $\phi$ 50, CAPACA
102040226	Stable capacitor 70 $\mu$ F,450VAC; $\phi$ 50, CAPACA
102040188	Start capacitor unit,200 $\mu$ F,220/265VAC,220V,CD60
102010384	Start capacitor,450V,AC,50Hz,40UF $\pm$ 5%
102220001	Thyristor(220V power unit capacitances-box,inter)
102100074	Button NB2-BE101, green
102100090	Emergency stop button LA39-11Z/r

The list of spare parts for103990088 (ZY) pump station:

103160127	Pump safety valve (ZY)
103990393	coupling (ZY)
103160128	Check valve (ZY)
103160129	Manual unloading valve (ZY)
103160130	Throttling valve (ZY)
104091334	Oil outlet pipe
103201882	oil drum 10L(Steel)
103209063	Oil inlet pipe (With screen) (ZY)
103990394	Gear pump CBK-F211 (ZY)
103160131	Cushion valve (ZY)
103160132	Valve block holder (ZY)
103990395	Pump station 220V single-phase 60HZ(For manual ZY pump station only, with button box) (ZY)
103020218	Bolt M5*10 (ZY)
102040222	Start capacitor 300 $\mu$ F,250VAC (ZY)
102040223	Stable capacitor 80 $\mu$ F,450VAC (ZY)

---

103260376	Pump handle (ZY)
104091335	Button box cover (ZY)
102110109	Contactora CJX2-18 10/32A (ZY)