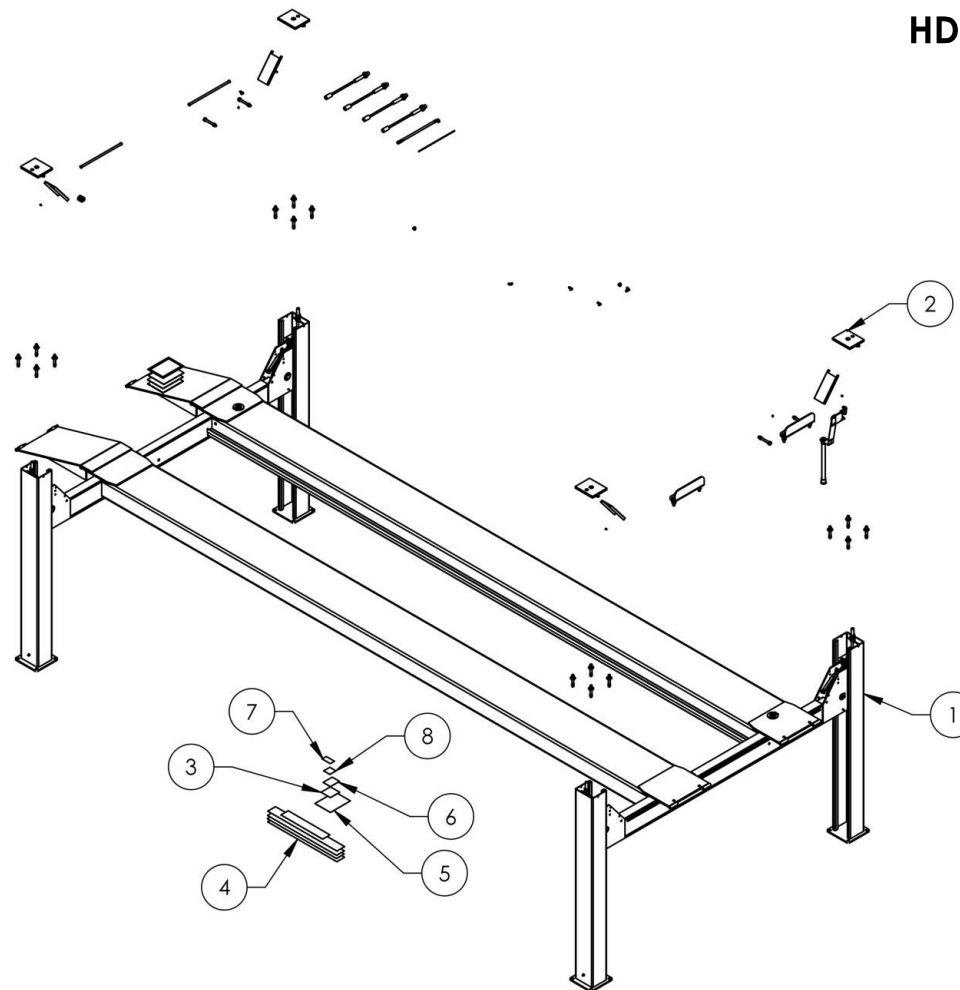


Service Manual

Service Parts & Diagrams

HDS-27X

BendPak SKU 5260069
HDS-27X Four-Post Car Lift
Version C
02/25/2016



This guide is a troubleshooting reference used for maintaining and servicing your BendPak product. It provides comprehensive information on identifying serviceable parts and components and assists in troubleshooting problems and performing assembly/disassembly procedures.



BendPak, Inc. Corporate Office

1645 Lemonwood Drive
Santa Paula, CA 93060 USA
Toll Free US/Canada: 1-800-253-2363
Fax: 1-805-933-9160
info@bendpak.com

Customer Service Desk / Warranty

Customer Service Representatives
Office Tel: 1-805-933-9970
Toll Free US/Canada: 1-800-253-2363
Fax: 1-805-933-9160
customerservice@bendpak.com

Parts Orders

Customer Service Representatives
Office Tel: 1-805-933-9970
Toll Free US/Canada: 1-800-253-2363
Fax: 1-805-933-9160
parts@bendpak.com

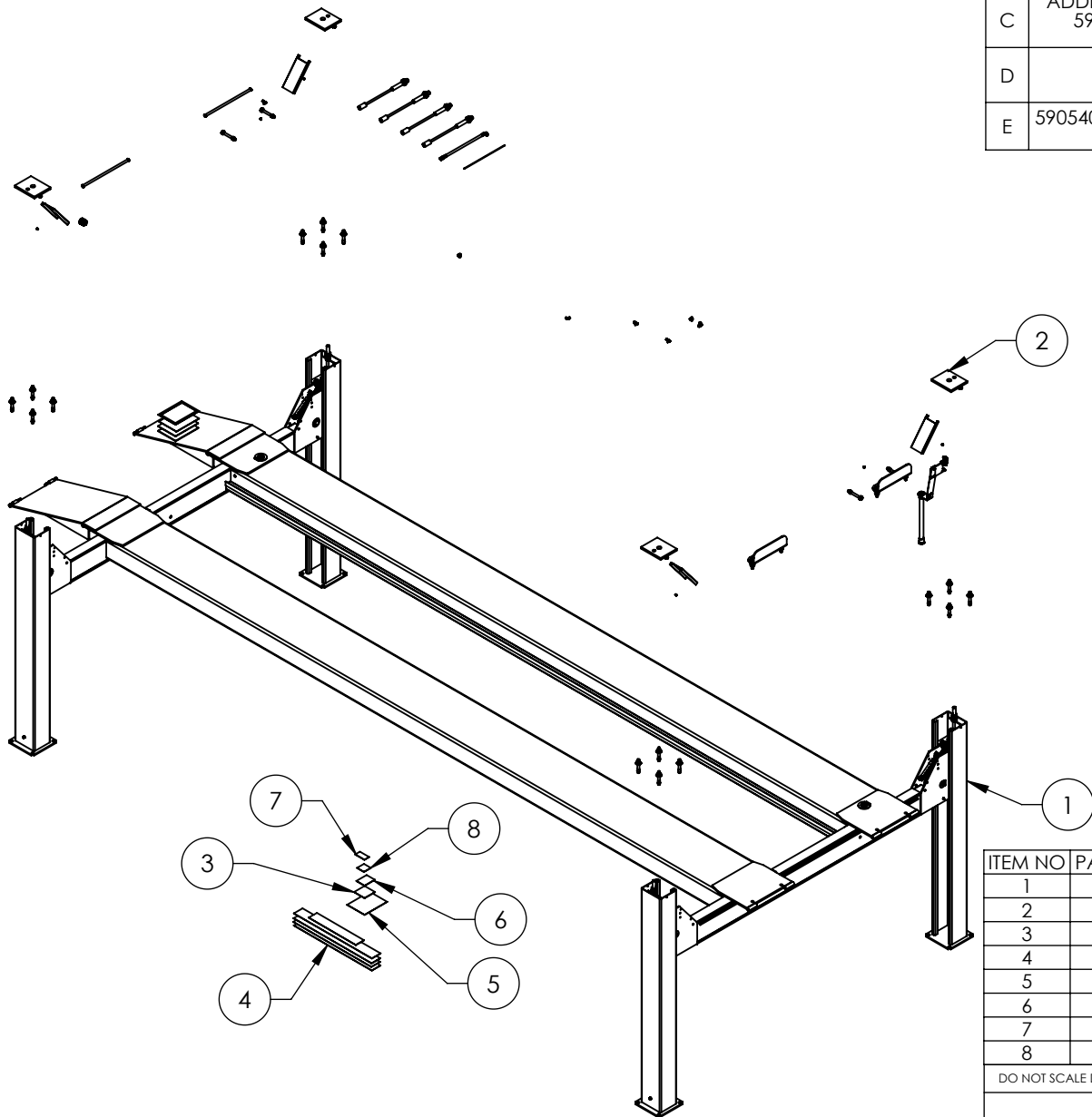
Domestic Sales & Service

USA Sales Representatives
Office Tel: 1-805-933-9970
Toll Free US/Canada: 1-800-253-2363
Fax: 1-805-933-9160
sales@bendpak.com

International Sales & Service

Office Tel: 1-805-933-9970
Exports Department: 1-805-933-9970 Ext. 192
Toll Free US/Canada: 1-800-253-2363
Fax: 1-805-933-9160
bpkexports@bendpak.com

		REVISION		
REV	DESCRIPTION	DATE	EDITED BY	ECO#
C	ADDED 5905103, 5905200, 5905407, 5905465, 5905940, AND 5930605, UPDATED BOM REVISION	08/04/2015	TM	00683
D	REPLACED 5930605 WITH 5905953, REPLACED 5905407 WITH 5905402, UPDATED BOM REVISIONS	12/10/2015	JM	00724
E	5905402 REPLACED BY 5905407, UPDATED BOM REVISIONS	12/28/2015	JM	00741



ITEM NO	PART NUMBER	DESCRIPTION	QTY	REV
1	5245011	HDS-27X LIFT SUPERSTRUCTURE	1	E
2	5250175	PARTS BOX HDS-27X	1	D
3	5905465	MANUFACTURER LABEL	1	--
4	5905200	4 POST DECAL KIT, LESS ALI	1	B
5	5905103	WARNING ALI/WL 200	1	--
6	5905407	MAX CAP DANGER 27K	1	--
7	5905940	PRODUCT DATA LABEL	1	--
8	5905953	SERIAL NUMBER INTERIOR TAG PLATE	1	--

DO NOT SCALE DRAWING	NAME	DATE	1645 LEMONWOOD DR. SANTA PAULA, CA 93060
	DRAWN	TM 09/22/2014	
	CHECKED		TITLE: HDS-27X PRODUCTION LIFT VER C (CE CERT)
	THIRD ANGLE PROJECTION		SIZE DWG. NO. REV
			A 5260069 E
	<small>PROPRIETARY AND CONFIDENTIAL THE INFORMATION CONTAINED IN THIS DRAWING IS THE SOLE PROPERTY OF BENDPAK INC. ANY REPRODUCTION IN PART OR AS A WHOLE WITHOUT THE WRITTEN PERMISSION OF BENDPAK INC. IS PROHIBITED.</small>		SCALE: 1:60 SHEET 1 OF 2

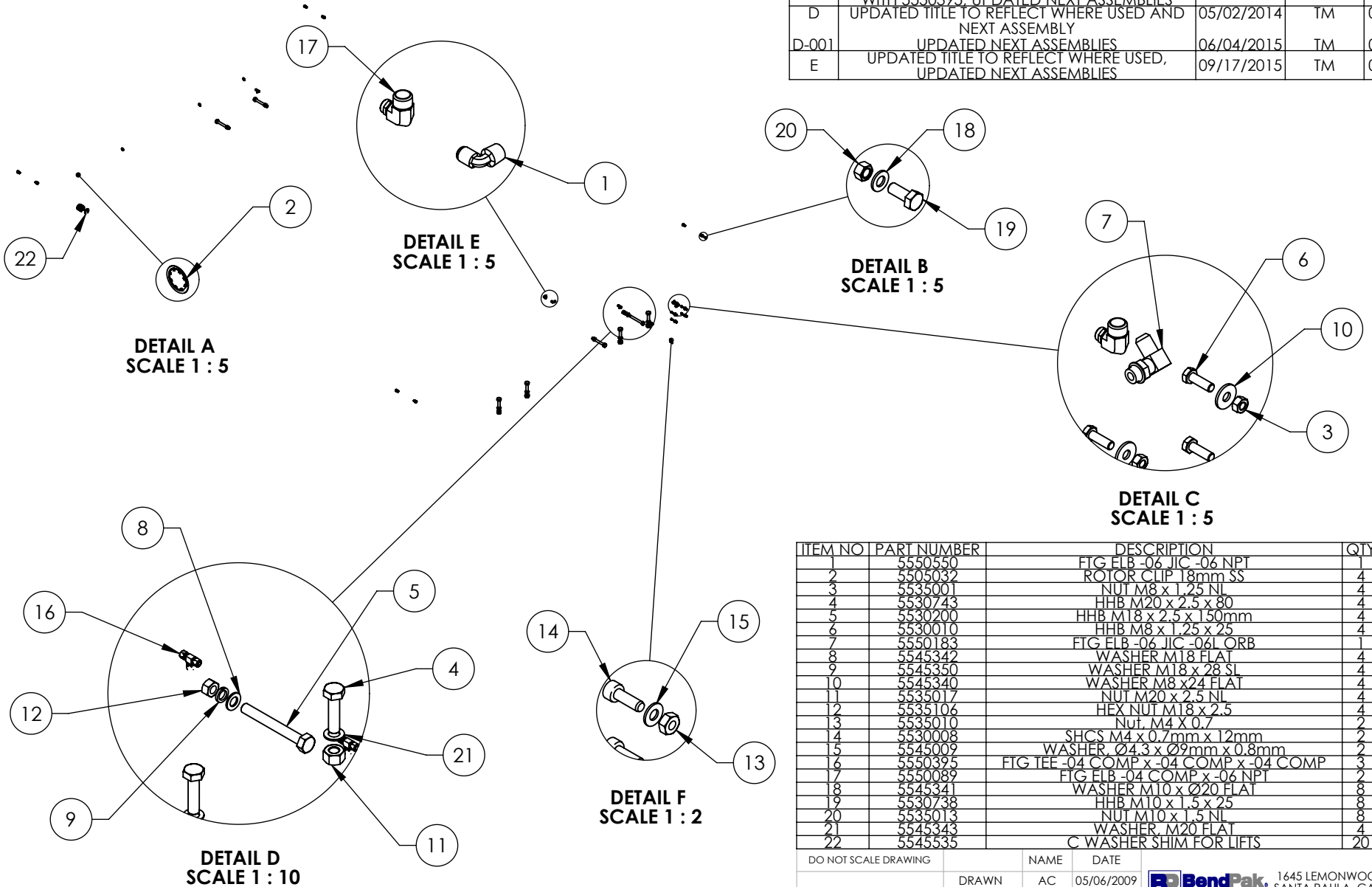
NOTE: UNLESS OTHERWISE SPECIFIED.

- SEE SHIPPING INSTRUCTIONS FOR FINAL PACKAGING
- ALL LABELS TO BE APPLIED TO POSTS AFTER PAINTING.
- SEE ATTACHED LABEL PLACEMENT SHEET



DIMENSIONS ARE IN MM

REVISION		DATE	EDITED BY	ECO#
C	REPLACED 5550004 WITH 5550089, 5550489 WITH 5550395, UPDATED NEXT ASSEMBLIES	10/29/2013	TM	00593
D	UPDATED TITLE TO REFLECT WHERE USED AND NEXT ASSEMBLY	05/02/2014	TM	00646
D-001	UPDATED NEXT ASSEMBLIES	06/04/2015	TM	00683
E	UPDATED TITLE TO REFLECT WHERE USED, UPDATED NEXT ASSEMBLIES	09/17/2015	TM	00724



ITEM NO	PART NUMBER	DESCRIPTION	QTY	REV
1	5550550	FTG FLB -06 JIC -06 NPT	1	--
2	5505032	ROTOR CLIP 18mm SS	4	--
3	5535001	NUT M8 x 1.25 NL	4	--
4	5530743	HHB M20 x 2.5 x 80	4	--
5	5530200	HHB M18 x 2.5 x 150mm	4	--
6	5530010	HHB M8 x 1.25 x 25	4	--
7	5550183	FTG FLB -06 JIC -06L ORB	1	--
8	5545342	WASHER M18 FLAT	4	--
9	5545350	WASHER M18 x 28 SL	4	--
10	5545340	WASHER M8 x24 FLAT	4	--
11	5535017	NUT M20 x 2.5 NL	4	--
12	5535106	HEX NUT M18 x 2.5	4	--
13	5535010	Nut, M4 X 0.7	2	--
14	5530008	SHCS M4 x 0.7mm x 12mm	2	--
15	5545009	WASHER, Ø4.3 x Ø9mm x 0.8mm	2	--
16	5550395	FTG TEE -04 COMP x -04 COMP x -04 COMP	3	--
17	5550089	FTG FLB -04 COMP x -06 NPT	2	--
18	5545341	WASHER M10 x Ø20 FLAT	8	--
19	5530738	HHB M10 x 1.5 x 25	8	--
20	5535013	NUT M10 x 1.5 NL	8	--
21	5545343	WASHER, M20 FLAT	4	--
22	5545535	C WASHER SHIM FOR LIFTS	20	--

DO NOT SCALE DRAWING

NAME: AC DATE: 05/06/2009

CHECKED: [Signature]

DIMENSIONS ARE IN MM

THIRD ANGLE PROJECTION

PROPRIETARY AND CONFIDENTIAL
THE INFORMATION CONTAINED IN THIS DRAWING IS THE SOLE PROPERTY OF BENDPAK INC. ANY REPRODUCTION IN PART OR AS A WHOLE WITHOUT THE WRITTEN PERMISSION OF BENDPAK INC. IS PROHIBITED.

TITLE: HDS-27/35 SERIES PARTS BAG

SCALE: 1:50

SIZE DWG. NO. A 5174600

REV E

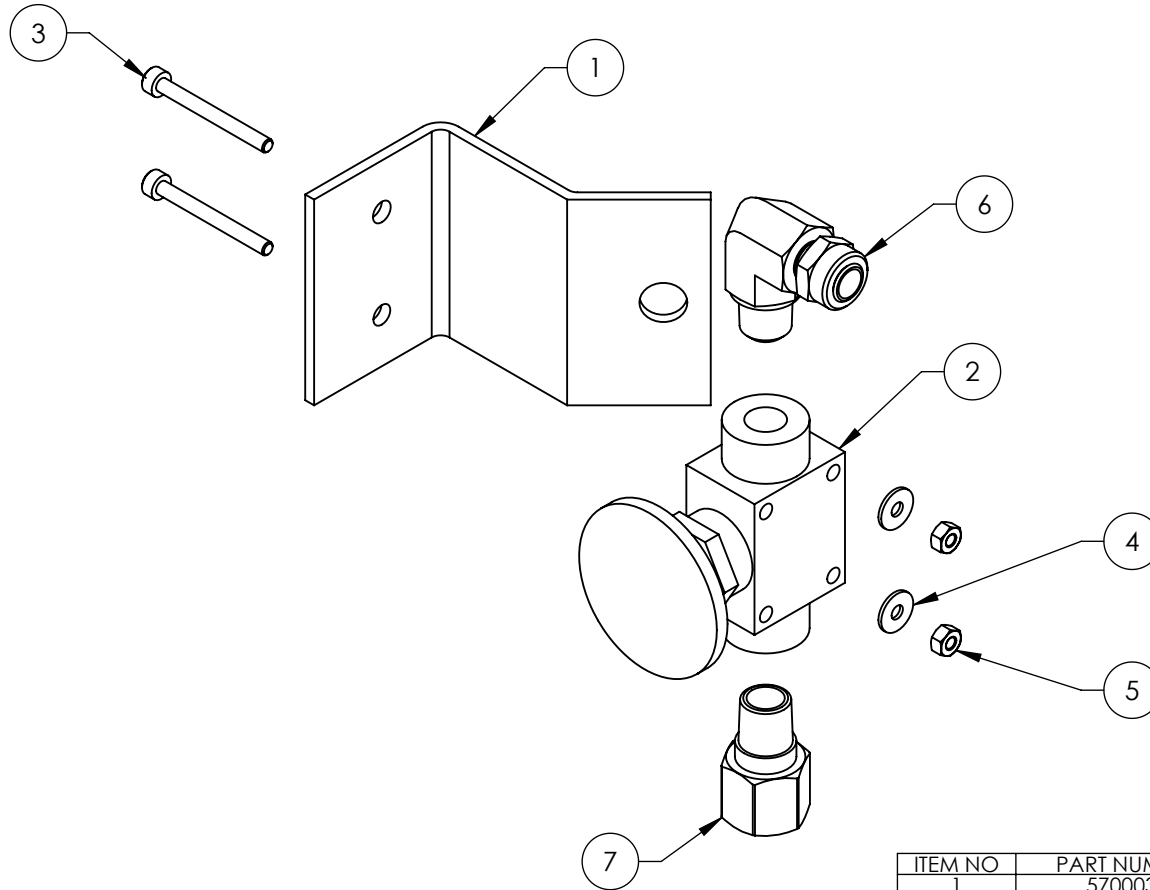
1645 LEMONWOOD DR. SANTA PAULA, CA 93060

SHEET 1 OF 1

NEXT ASSEMBLY
5250159
5250172
5250175
5250177
5250179
5250364

NOTE: UNLESS OTHERWISE SPECIFIED.
1. SEE SHIPPING INSTRUCTIONS FOR FINAL PACKAGING

REV	DESCRIPTION	REVISION	DATE	EDITED BY	ECO#
D	UPDATED NEXT ASSEMBLY, ADDED 5550486		02/24/2010	AC	00333
D-001	UPDATED NEXT ASSEMBLY		01/21/2011	TM	00439
D-010	UPDATED NEXT ASSEMBLIES		07/24/2013	TM	00611
E	REPLACED 5550481 WITH 5550087		10/29/2013	TM	00593
F	REPLACED 5590240 WITH 5590175, UPDATED NEXT ASSEMBLIES		05/05/2015	MR	00683



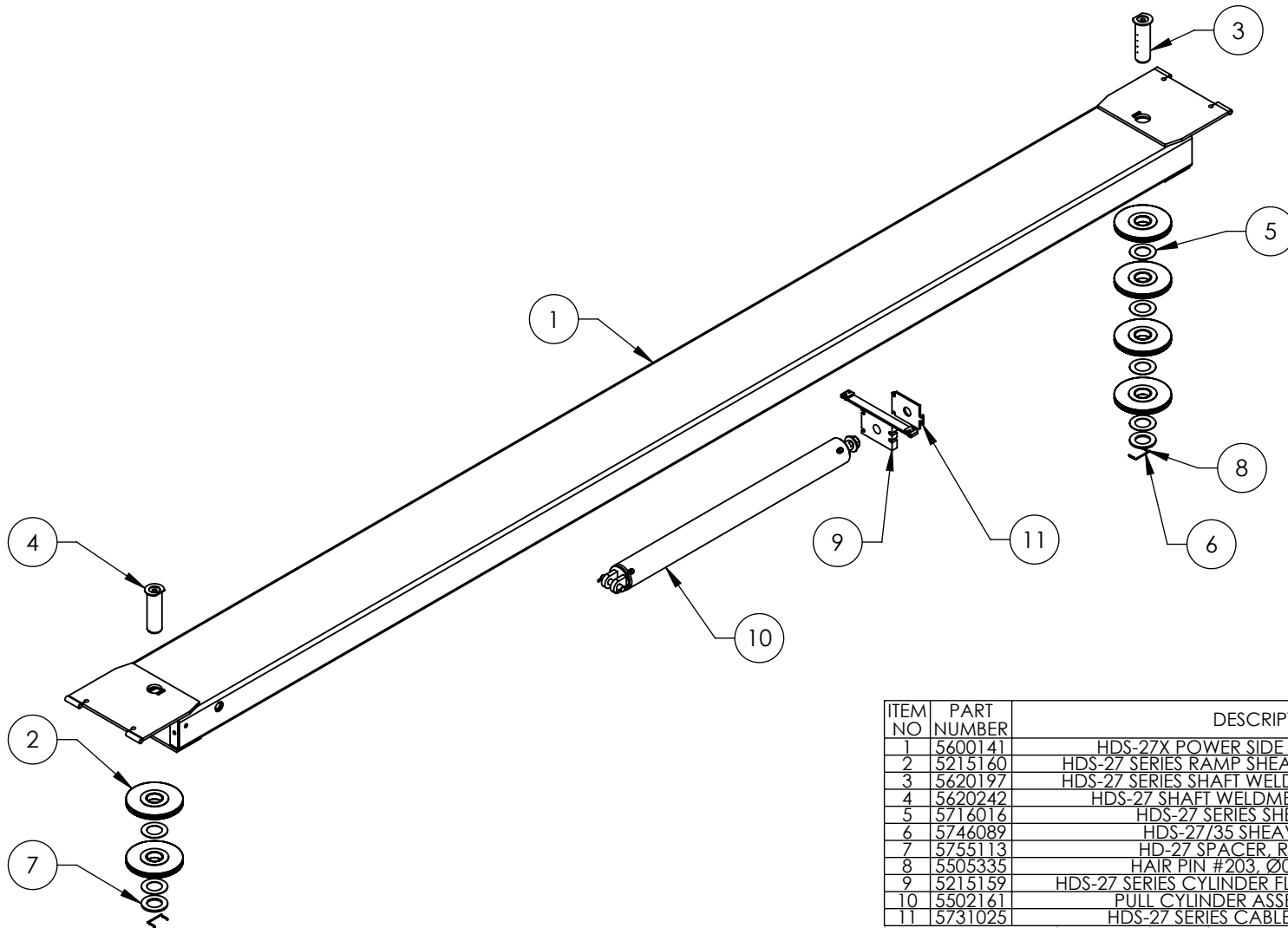
ITEM NO	PART NUMBER	DESCRIPTION	QTY	REV
1	5700031	ZERO ANGLE MTG BRACKET	1	C
2	5590175	PUSH BUTTON AIR VALVE	1	A
3	5530043	SHCS M3 x 0.5 x 30	2	-
4	5545024	WASHER M3 x 9mm	2	-
5	5535020	NUT M3 x 0.5 NL	2	-
6	5550087	FTG ELB -04 COMP x -02 NPT	1	-
7	5550486	FTG NPL -02 NPT x -04 F NPT	1	-

DO NOT SCALE DRAWING	NAME	DATE	1645 LEMONWOOD DR. SANTA PAULA, CA 93060
	DRAWN	AC 3/14/2008	
	CHECKED	CA 09/02/2015	
DIMENSIONS ARE IN MM	THIRD ANGLE PROJECTION		TITLE: PUSH BUTTON AIR ASSEMBLY
			SIZE DWG. NO.
	PROPRIETARY AND CONFIDENTIAL THE INFORMATION CONTAINED IN THIS DRAWING IS THE SOLE PROPERTY OF BENDPAK INC. ANY REPRODUCTION IN PART OR AS A WHOLE WITHOUT THE WRITTEN PERMISSION OF BENDPAK INC. IS PROHIBITED.		A 5215096
		SCALE: 2:3	REV F
		SHEET 1 OF 1	

NOTE: UNLESS OTHERWISE SPECIFIED.
 T. ASSEMBLE ITEMS AS SHOWN

NEXT ASSEMBLY
HD/HDS/HDSO
SERIES
5250118
5250249
5250364

REV	DESCRIPTION	REVISION	DATE	EDITED BY	ECO#
M	REMOVED 5535031, 5505175 AND 5505120		01/29/2015	MR	00675
N	UPDATED BOM REVISION		05/01/2015	MR	00683
P	REMOVED 5550026, UPDATED BOM REVISIONS		09/21/2015	TM	00724



ITEM NO	PART NUMBER	DESCRIPTION	QTY	REV
1	5600141	HDS-27X POWER SIDE RAMP WELDMENT	1	G
2	5215160	HDS-27 SERIES RAMP SHEAVE ROLLER ASSEMBLY	6	B
3	5620197	HDS-27 SERIES SHAFT WELDMENT, 4 SHEAVE END	1	A
4	5620242	HDS-27 SHAFT WELDMENT, 2 SHEAVE END	1	A
5	5716016	HDS-27 SERIES SHEAVE SPACER	6	B
6	5746089	HDS-27/35 SHEAVE SHAFT PIN	2	B
7	5755113	HD-27 SPACER, RAMP SHEAVE	2	A
8	5505335	HAIR PIN #203, Ø0.093" X 1.5/8"	4	-
9	5215159	HDS-27 SERIES CYLINDER FLANGE ARM ASSEMBLY	1	C
10	5502161	PULL CYLINDER ASSEMBLY Ø5.0 x 60	1	F
11	5731025	HDS-27 SERIES CABLE RETAINER PLATE	1	A

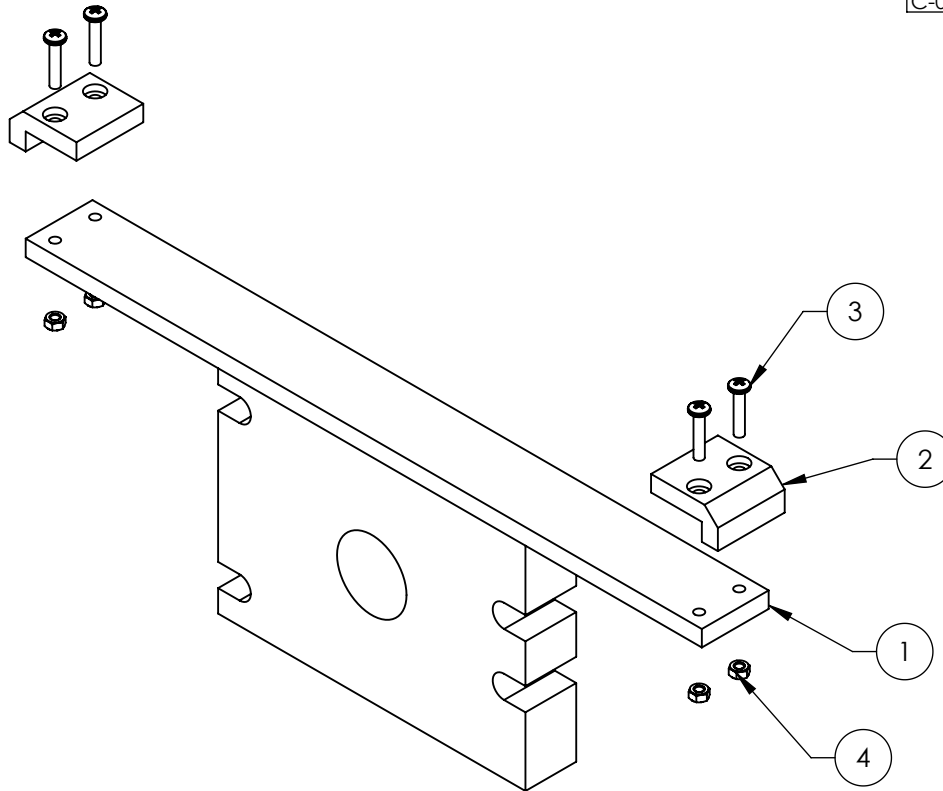
DO NOT SCALE DRAWING	NAME	DATE	1645 LEMONWOOD DR. SANTA PAULA, CA 93060
	DRAWN GJZ	10/21/2008	
	CHECKED		
DIMENSIONS ARE IN MM	THIRD ANGLE PROJECTION		TITLE: HDS-27X POWER SIDE RAMP ASSEMBLY
			SIZE DWG. NO. REV
	<small>PROPRIETARY AND CONFIDENTIAL THE INFORMATION CONTAINED IN THIS DRAWING IS THE SOLE PROPERTY OF BENDPAK INC. ANY REPRODUCTION IN PART OR AS A WHOLE WITHOUT THE WRITTEN PERMISSION OF BENDPAK INC. IS PROHIBITED.</small>		A 5215157 P
SCALE: 1:35		SHEET 1 OF 2	

NOTE: UNLESS OTHERWISE SPECIFIED.




- SEE SHIPPING INSTRUCTIONS FOR FINAL PACKAGING
- ASSEMBLE ITEMS AS SHOWN
- VERIFY CYLINDER PORTS ARE CAPPED OFF WITH 3/8" NPT STEEL PLUG

NEXT ASSEMBLY
5245011

REV	DESCRIPTION	REVISION	DATE	EDITED BY	ECO#
A	DERIVED FROM H-294/H-310, PRODUCTION RELEASE		10/21/2008	GJZ	00241
B	UPDATED BOM REVISION		03/08/2010	TM	00333
C	CHANGED TITLE WAS "ALIGNMENT PLATE" NOW "CYLINDER FLANGE ARM", UPDATED BOM REVISION		05/17/2010	TM	00355
C-001	UPDATED NEXT ASSEMBLY		06/02/2015	TM	00683
C-002	UPDATED NEXT ASSEMBLY		09/18/2015	TM	00724



ITEM NO	PART NUMBER	DESCRIPTION	QTY	REV
1	5620202	HDS-27 SERIES CYLINDER FLANGE ARM WELDMENT	1	C
2	5716153	HDS-27/35 SERIES ALIGNMENT BLOCK	2	B
3	5530095	BHPS M6 x 1 x 30mmL	4	-
4	5535357	NUT M6 x 1.0 NL	4	-

DO NOT SCALE DRAWING		NAME	DATE	 1645 LEMONWOOD DR. SANTA PAULA, CA 93060
		DRAWN	GJZ 10/21/2008	
		CHECKED		
DIMENSIONS ARE IN MM		THIRD ANGLE PROJECTION		
				
		TITLE: HDS-27 SERIES CYLINDER FLANGE ARM ASSEMBLY		
		SIZE	DWG. NO.	REV
		A	5215159	C
SCALE: 1:4				SHEET 1 OF 1

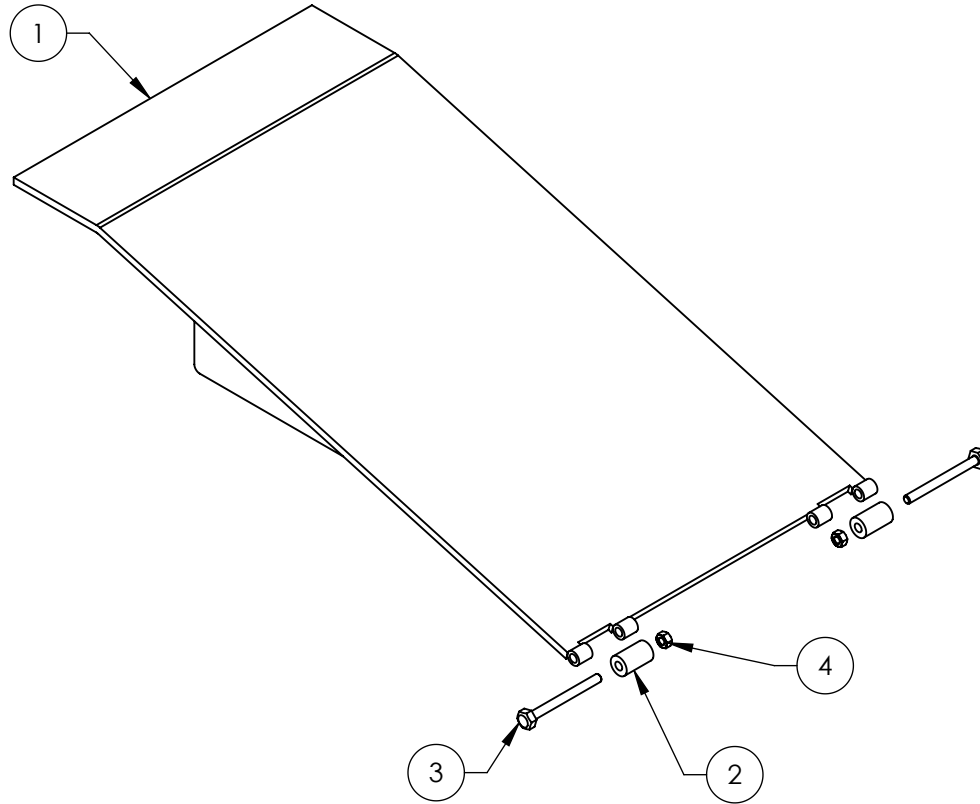
NOTE: UNLESS OTHERWISE SPECIFIED.

- SEE SHIPPING INSTRUCTIONS FOR FINAL PACKAGING
- ASSEMBLE ITEMS AS SHOWN

NEXT ASSEMBLY
5215157
5215164
5215689

PROPRIETARY AND CONFIDENTIAL
 THE INFORMATION CONTAINED IN THIS DRAWING IS
 THE SOLE PROPERTY OF BENDPAK INC. ANY
 REPRODUCTION IN PART OR AS A WHOLE WITHOUT
 THE WRITTEN PERMISSION OF BENDPAK INC. IS
 PROHIBITED.

		REVISION		
REV	DESCRIPTION	DATE	EDITED BY	ECO#
B	UPDATED TITLE TO REFLECT WHERE USED, UPDATED NEXT ASSEMBLIES	05/02/2013	TM	00593
C	UPDATED BOM REVISION	09/09/2014	TM	00666
C-001	UPDATED NEXT ASSEMBLIES	09/26/2014	TM	00666
C-002	UPDATED NEXT ASSEMBLY	06/04/2015	TM	00683
D	UPDATED BOM REVISION UPDATED NEXT ASSEMBLY	10/05/2015	TM	00724



ITEM NO	PART NUMBER	DESCRIPTION	QTY	REV
1	5620206	HDS-27 DRIVE UP RAMP WELDMENT	1	D
2	5575663	HDS-27/35 DRIVE UP RAMP WHEEL	2	B
3	5530035	HHB M12 x 1.75 x 130	2	-
4	5535012	NUT M12x1.75 NL	2	-

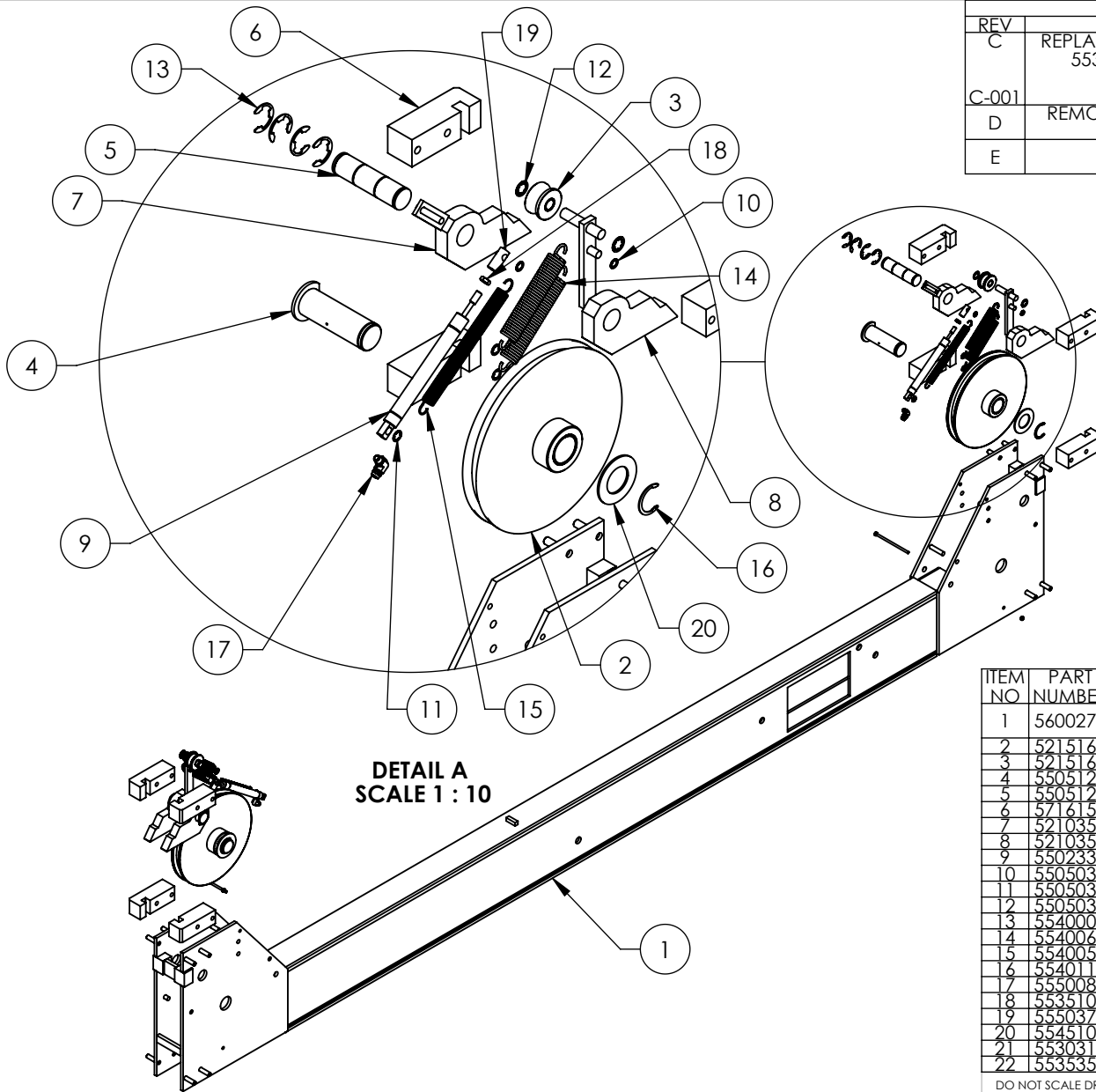
DO NOT SCALE DRAWING		NAME	DATE	1645 LEMONWOOD DR. SANTA PAULA, CA 93060
DRAWN		GJZ	10/23/2008	
CHECKED				TITLE: HDS-27 DRIVE UP RAMP ASSEMBLY
DIMENSIONS ARE IN MM		THIRD ANGLE PROJECTION		
				SIZE DWG. NO.
		PROPRIETARY AND CONFIDENTIAL THE INFORMATION CONTAINED IN THIS DRAWING IS THE SOLE PROPERTY OF BENDPAK INC. ANY REPRODUCTION IN PART OR AS A WHOLE WITHOUT THE WRITTEN PERMISSION OF BENDPAK INC. IS PROHIBITED.		REV
		A 5215163		D
SCALE: 1:10			SHEET 1 OF 1	

NOTE: UNLESS OTHERWISE SPECIFIED.

- SEE SHIPPING INSTRUCTIONS FOR FINAL PACKAGING
- ASSEMBLE ITEMS AS SHOWN

NEXT ASSEMBLY
5245007
5245011
5245405

REV	DESCRIPTION	REVISION	DATE	EDITED BY	ECO#
C	REPLACED 5700164 WITH 5716633, REMOVED 5530317 AND 5535357, UPDATED BOM REVISION AND NEXT ASSEMBLIES		09/09/2014	TM	00666
C-001	UPDATED NEXT ASSEMBLY		06/04/2015	TM	00683
D	REMOVED 5716633 AND 5550026, UPDATED NEXT ASSEMBLY		09/21/2015	TM	00724
E	UPDATED BOM REVISIONS		12/28/2015	JM	00741



ITEM NO	PART NUMBER	DESCRIPTION	QTY	REV
1	5600279	HDS-27/35 SERIES LARGE WINDOW CROSSTUBE WELDMENT	1	J
2	5215166	HDS-27 SERIES CROSSTUBE SHEAVE ASSEMBLY	2	B
3	5215169	HDS-27 SERIES SAFETY ROLLER ASSEMBLY	2	C
4	5505124	HDS-27/35 SERIES CROSS TUBE SHEAVE SHAFT	2	C
5	5505125	HDS-27/35 SAFETY PIN	2	C
6	5716152	HDS-27/35 SERIES PLASTIC SLIDE BLOCK	8	B
7	5210359	HDS-27/35 SERIES SAFETY WELDMENT #1	2	B
8	5210358	HDS-27/35 SERIES SAFETY WELDMENT #2	2	B
9	5502335	AIR CYLINDER, Ø.25 x 1.0" TRAVEL	2	-
10	5505030	ROTOR CLIP 10mm SS	4	-
11	5505031	ROTOR CLIP 12mm SS	6	-
12	5505033	ROTOR CLIP 16mm SS	4	-
13	5540002	F RING Ø1.375" OD TRUARC X5133-137	8	-
14	5540060	SPRING Ø29 x 178mm, SLACK SAFETY	4	A
15	5540055	SPRING Ø19 x 241mm, AIR CYLINDER	2	A
16	5540112	SNAP RING; TRUARC 5103-175	2	-
17	5550087	FIG FLB -04 COMP x -02 NPT	2	-
18	5535101	3/8-16 HEX NUT JAM	2	-
19	5550376	HDS-27/35 SERIES ADAPTER, 1" AIR CYLINDER	2	B
20	5545108	WASHER M45 x 80 FLAT	2	-
21	5530317	HFB M6 x 1 x 136	2	-
22	5535357	NUT M6 x 1.0 NL	2	-

DETAIL A
SCALE 1 : 10

DO NOT SCALE DRAWING

NAME	DATE
DRAWN TM	04/29/2013
CHECKED	

BendPak 1645 LEMONWOOD DR.
SANTA PAULA, CA 93060

DIMENSIONS ARE IN MM

THIRD ANGLE PROJECTION



TITLE: HDS-27 SERIES LARGE WINDOW CROSSTUBE ASSEMBLY

SIZE	DWG. NO.	REV
A	5215608	E

PROPRIETARY AND CONFIDENTIAL
THE INFORMATION CONTAINED IN THIS DRAWING IS THE SOLE PROPERTY OF BENDPAK INC. ANY REPRODUCTION IN PART OR AS A WHOLE WITHOUT THE WRITTEN PERMISSION OF BENDPAK INC. IS PROHIBITED.

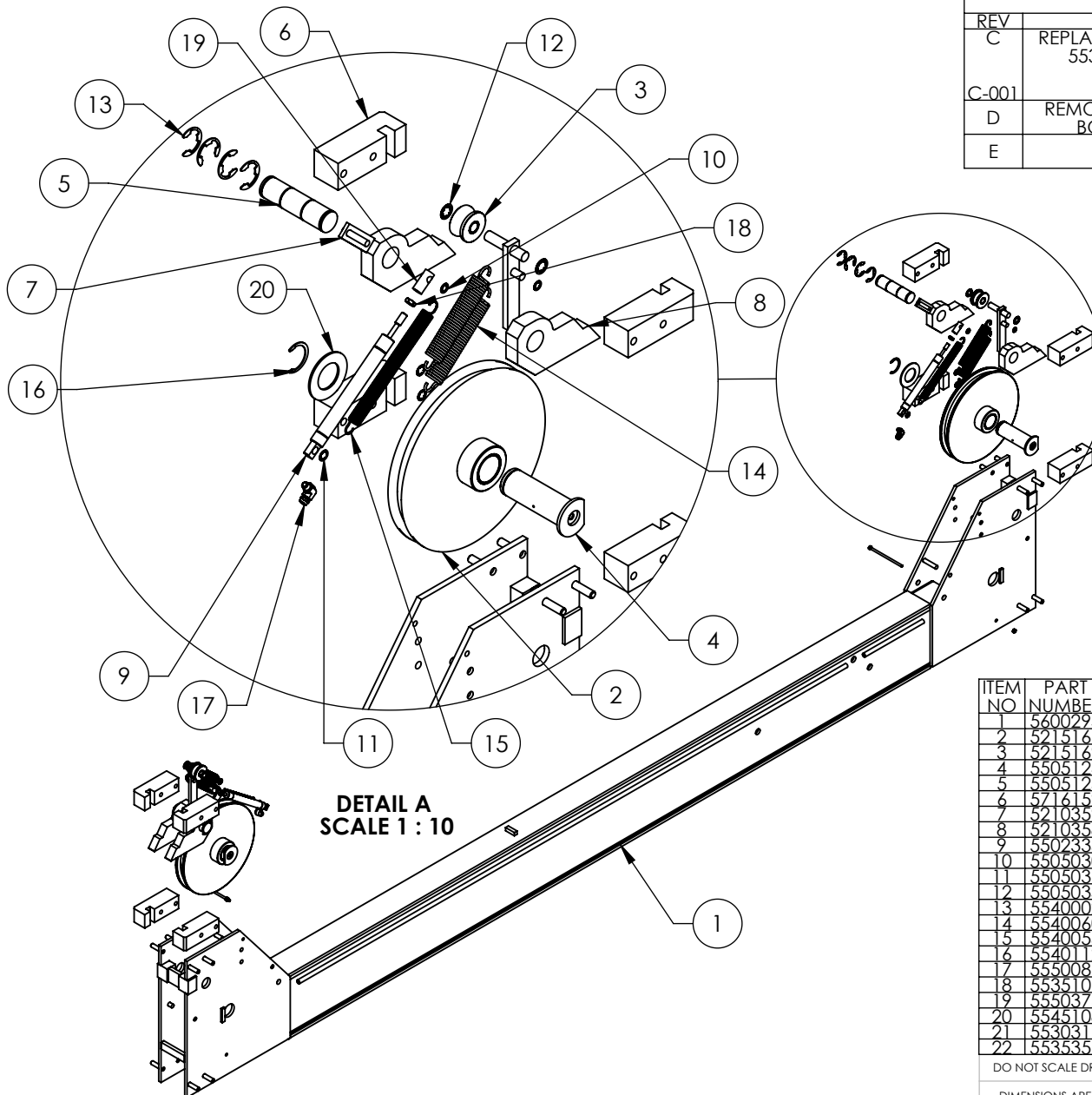
SCALE: 1:20

SHEET 1 OF 1

NOTE: UNLESS OTHERWISE SPECIFIED.

- SEE SHIPPING INSTRUCTIONS FOR FINAL PACKAGING
- ASSEMBLE ITEMS AS SHOWN

NEXT ASSEMBLY
5245007
5245011
5245405



REV	DESCRIPTION	REVISION	DATE	EDITED BY	ECO#
C	REPLACED 5700164 WITH 5716633, REMOVED 5530317 AND 5535357, UPDATED BOM REVISION AND NEXT ASSEMBLIES		09/09/2014	TM	00666
C-001	UPDATED NEXT ASSEMBLY		06/04/2015	TM	00683
D	REMOVED 5716633 AND 5550026, UPDATED BOM REVISION AND NEXT ASSEMBLY		09/18/2015	TM	00724
E	UPDATED BOM REVISIONS		12/28/2015	JM	00741

ITEM NO	PART NUMBER	DESCRIPTION	QTY	REV
1	5600293	HDS-27/35 SERIES SMALL WINDOW CROSSTUBE WELDMENT	1	J
2	5215166	HDS-27 SERIES CROSSTUBE SHEAVE ASSEMBLY	2	B
3	5215169	HDS-27 SERIES SAFETY ROLLER ASSEMBLY	2	C
4	5505124	HDS-27/35 SERIES CROSS TUBE SHEAVE SHAFT	2	C
5	5505125	HDS-27/35 SAFETY PIN	2	C
6	5716152	HDS-27/35 SERIES PLASTIC SLIDE BLOCK	8	B
7	5210359	HDS-27/35 SERIES SAFETY WELDMENT #1	2	B
8	5210358	HDS-27/35 SERIES SAFETY WELDMENT #2	2	B
9	5502335	AIR CYLINDER, Ø.25 x 1.0" TRAVEL	2	-
10	5505030	ROTOR CLIP 10mm SS	4	-
11	5505031	ROTOR CLIP 12mm SS	6	-
12	5505033	ROTOR CLIP 16mm SS	4	-
13	5540002	F RING Ø1.375" OD TRUARC X5133-137	8	-
14	5540060	SPRING Ø29 x 178mm. SLACK SAFETY	4	A
15	5540055	SPRING Ø19 x 241mm. AIR CYLINDER	2	A
16	5540112	SNAP RING; TRUARC 5103-175	2	-
17	5550087	FTG FLB -04 COMP x -02 NPT	2	-
18	5535101	3/8-16 HEX NUT JAM	2	-
19	5550376	HDS-27/35 SERIES ADAPTER, 1" AIR CYLINDER	2	B
20	5545108	WASHER M45 x 80 FLAT	2	-
21	5530317	HHB M6 x 1 x 136	2	-
22	5535357	NUT M6 x 1.0 NL	2	-

DETAIL A
SCALE 1 : 10

NOTE: UNLESS OTHERWISE SPECIFIED.

- SEE SHIPPING INSTRUCTIONS FOR FINAL PACKAGING
- ASSEMBLE ITEMS AS SHOWN

NEXT ASSEMBLY
5245007
5245011
5245405

DO NOT SCALE DRAWING

DIMENSIONS ARE IN MM

NAME: TM DATE: 04/30/2013

CHECKED: [Signature]

THIRD ANGLE PROJECTION

PROPRIETARY AND CONFIDENTIAL
THE INFORMATION CONTAINED IN THIS DRAWING IS THE SOLE PROPERTY OF BENDPAK INC. ANY REPRODUCTION IN PART OR AS A WHOLE WITHOUT THE WRITTEN PERMISSION OF BENDPAK INC. IS PROHIBITED.

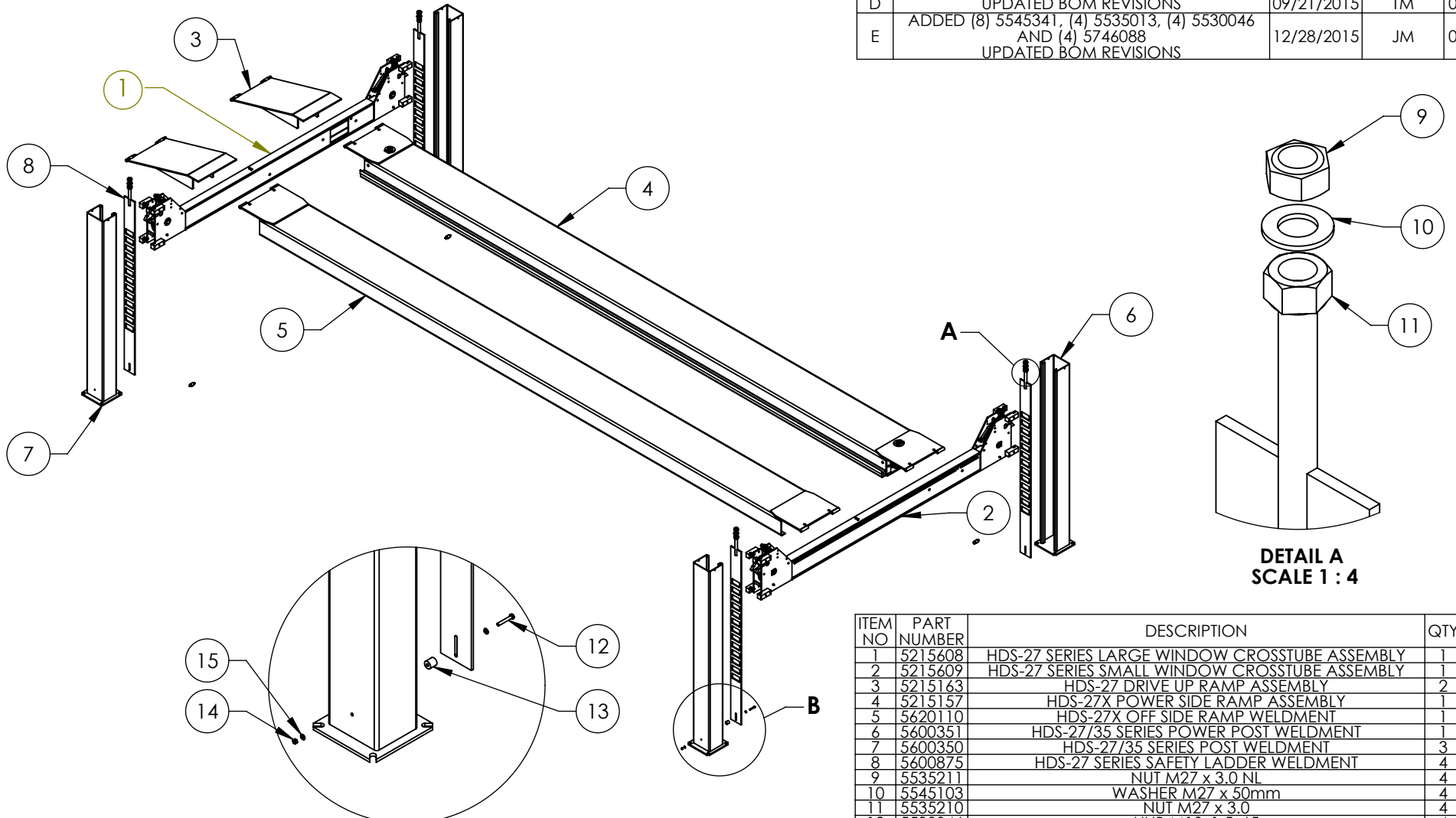
TITLE: HDS-27 SERIES SMALL WINDOW CROSSTUBE ASSEMBLY

SIZE DWG. NO. A 5215609 REV E

SCALE: 1:20 SHEET 1 OF 1

BendPak 1645 LEMONWOOD DR. SANTA PAULA, CA 93060

		REVISION		
REV	DESCRIPTION	DATE	EDITED BY	ECO#
C	UPDATED BOM REVISION	9/1/2015	CA	00683
D	UPDATED BOM REVISIONS	09/21/2015	TM	00724
E	ADDED (8) 5545341, (4) 5535013, (4) 5530046 AND (4) 5746088 UPDATED BOM REVISIONS	12/28/2015	JM	00741



**DETAIL A
SCALE 1 : 4**

**DETAIL B
SCALE 1 : 20**

ITEM NO	PART NUMBER	DESCRIPTION	QTY	REV
1	5215608	HDS-27 SERIES LARGE WINDOW CROSSTUBE ASSEMBLY	1	E
2	5215609	HDS-27 SERIES SMALL WINDOW CROSSTUBE ASSEMBLY	1	E
3	5215163	HDS-27 DRIVE UP RAMP ASSEMBLY	2	D
4	5215157	HDS-27X POWER SIDE RAMP ASSEMBLY	1	P
5	5620110	HDS-27X OFF SIDE RAMP WELDMENT	1	D
6	5600351	HDS-27/35 SERIES POWER POST WELDMENT	1	C
7	5600350	HDS-27/35 SERIES POST WELDMENT	3	C
8	5600875	HDS-27 SERIES SAFETY LADDER WELDMENT	4	B
9	5535211	NUT M27 x 3.0 NL	4	-
10	5545103	WASHER M27 x 50mm	4	-
11	5535210	NUT M27 x 3.0	4	-
12	5530046	HHB M10x1.5x65	4	A
13	5746088	HDS-27 SPACER, SAFETY LADDER, 31mm LG	4	A
14	5535013	NUT M10 x 1.5 NL	4	-
15	5545341	WASHER M10 x Ø20 FLAT	8	-

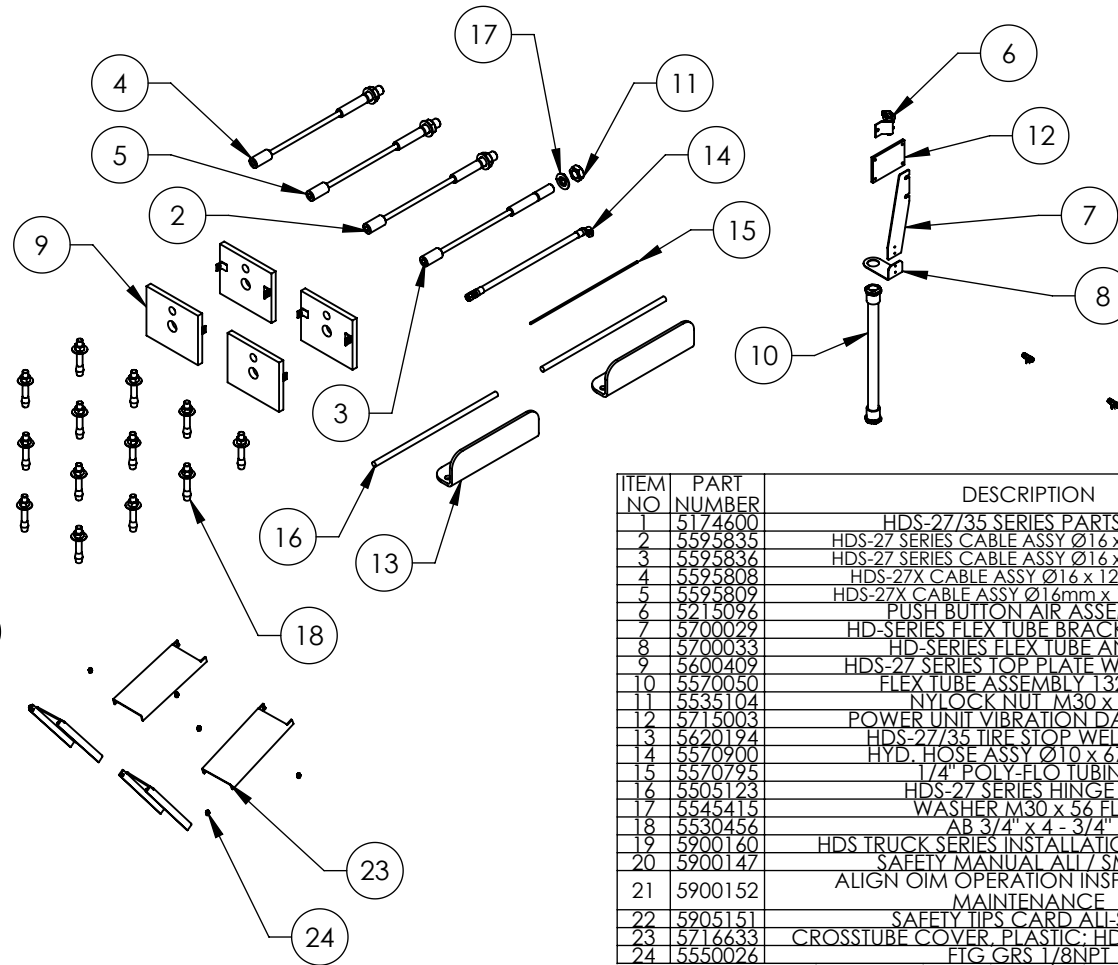
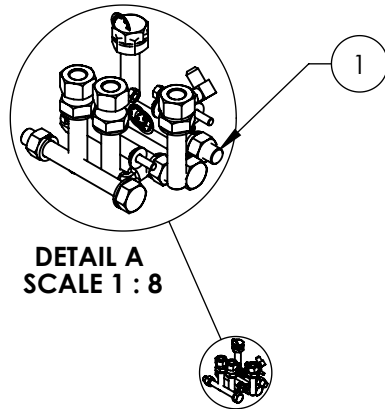
DO NOT SCALE DRAWING	NAME	DATE	1645 LEMONWOOD DR. SANTA PAULA, CA 93060
	DRAWN	TM 09/10/2014	
	CHECKED		
DIMENSIONS ARE IN MM	THIRD ANGLE PROJECTION		TITLE:
			HDS-27X LIFT SUPERSTRUCTURE
			SIZE
			A 5245011 E
SCALE: 1:60			SHEET 1 OF 1

NOTE: UNLESS OTHERWISE SPECIFIED.
 1. SEE SHIPPING INSTRUCTIONS FOR FINAL PACKAGING
 2. FASTEN NUTS AND WASHERS TO SAFETY LADDERS IN ORDER SHOWN FOR SHIPMENT

NEXT ASSEMBLY
5260069

PROPRIETARY AND CONFIDENTIAL
 THE INFORMATION CONTAINED IN THIS DRAWING IS THE SOLE PROPERTY OF BENDPAK INC. ANY REPRODUCTION IN PART OR AS A WHOLE WITHOUT THE WRITTEN PERMISSION OF BENDPAK INC. IS PROHIBITED.

REV	DESCRIPTION	REVISION	DATE	EDITED BY	ECO#
C	REMOVED 5736724, 5900153, AND 5215637, UPDATED NEXT ASSEMBLY		09/22/2014	TM	00666
D	REMOVED 5905103, 5905200, 5905407, 5905465, 5905940, AND 5930605, UPDATED BOM REVISIONS		08/04/2015	TM	00683
E	ADDED 5716633 AND 5550026, REMOVED 5900151, UPDATED BOM REVISIONS		09/21/2015	TM	00724



ITEM NO	PART NUMBER	DESCRIPTION	QTY.	REV
1	5174600	HDS-27/35 SERIES PARTS BAG	1	F
2	5595835	HDS-27 SERIES CABLE ASSY Ø16 x 4127mm ST	1	C
3	5595836	HDS-27 SERIES CABLE ASSY Ø16 x 5855mm ST	1	C
4	5595808	HDS-27X CABLE ASSY Ø16 x 12007mm ST	1	G
5	5595809	HDS-27X CABLE ASSY Ø16mm x 13739mm ST	1	G
6	5215096	PUSH BUTTON AIR ASSEMBLY	1	F
7	5700029	HD-SERIES FLEX TUBE BRACKET PLATE	1	F
8	5700033	HD-SERIES FLEX TUBE ANGLE	1	F
9	5600409	HDS-27 SERIES TOP PLATE WELDMENT	4	A
10	5570050	FLEX TUBE ASSEMBLY 1320mm	1	B
11	5535104	NYLOCK NUT M30 x 3.5	4	-
12	5715003	POWER UNIT VIBRATION DAMPENER	1	B
13	5620194	HDS-27/35 TIRE STOP WELDMENT	2	B
14	5570900	HYD. HOSE ASSY Ø10 x 6782mm	1	A
15	5570795	1/4" POLY-FLO TUBING	24000mm*	-
16	5505123	HDS-27 SERIES HINGE PIN	2	B
17	5545415	WASHER M30 x 56 FLAT	4	-
18	5530456	AB 3/4" x 4 - 3/4"	16	-
19	5900160	HDS TRUCK SERIES INSTALLATION MANUAL	1	-
20	5900147	SAFETY MANUAL ALL / SM 93-1	1	-
21	5900152	ALIGN OIM OPERATION INSPECTION & MAINTENANCE	1	-
22	5905151	SAFETY TIPS CARD ALL-ST 90	1	-
23	5716633	CROSSTUBE COVER, PLASTIC; HDS-27/35 SERIES	4	B
24	5550026	FIG GRS 1/8NPT	6	-

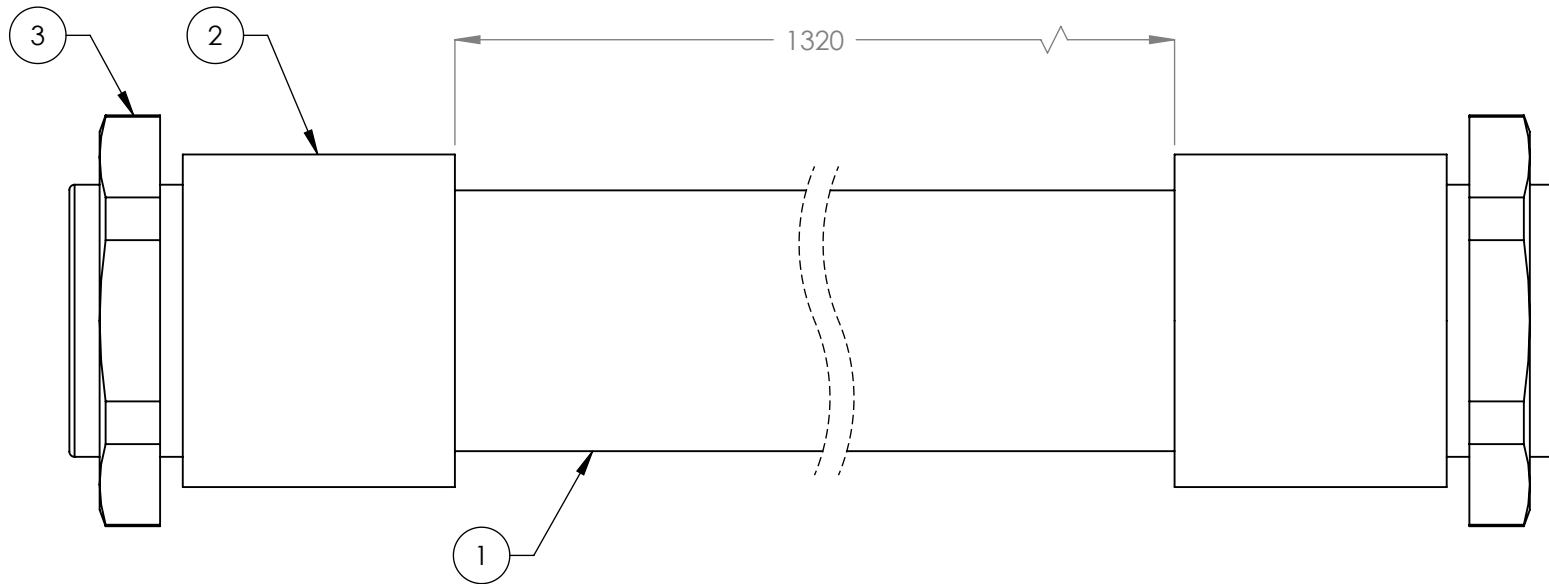
NOTE: UNLESS OTHERWISE SPECIFIED.

- SEE SHIPPING INSTRUCTIONS FOR FINAL PACKAGING
- INSERT PARTS BAG INTO PARTS BOX FOR SHIPMENT
- THREAD 5535104 WITH 5545415 ONTO CABLES FOR SHIPMENT
- HOSES AND CABLES IN REPRESENTATIONAL FORM
(*) LENGTH FOR REFERENCE ONLY

NEXT ASSEMBLY
5260069

DO NOT SCALE DRAWING	NAME	DATE	1645 LEMONWOOD DR. SANTA PAULA, CA 93060
	DRAWN	TM 05/08/2013	
	CHECKED		
DIMENSIONS ARE IN MM	THIRD ANGLE PROJECTION		TITLE:
			PARTS BOX HDS-27X
	<small>PROPRIETARY AND CONFIDENTIAL THE INFORMATION CONTAINED IN THIS DRAWING IS THE SOLE PROPERTY OF BENDPAK INC. ANY REPRODUCTION IN PART OR AS A WHOLE WITHOUT THE WRITTEN PERMISSION OF BENDPAK INC. IS PROHIBITED.</small>		SCALE: 1:25
	SIZE DWG. NO.	REV	SHEET 1 OF 1
	A 5250175	D	

		REVISION		
REV.	DESCRIPTION	DATE	EDITED BY	ECO#
A	PRODUCTION RELEASE	12/24/2007	AC	00104
A-001	CHANGED SURFACE FINISH FROM 3.2 μm TO 1.6 Ra μm	09/05/2008	GJ	00237
A-002	UPDATED NEXT ASSEMBLY	10/02/2008	AC	00140
B	UPDATE TUBE TO NEW STYLE, UPDATED NEXT ASSEMBLY AND TITLE	12/11/2008	AC	00256
B-001	UPDATED NEXT ASSEMBLY	05/04/2009	AC	00277
B-013	UPDATED NEXT ASSEMBLIES	05/17/2013	TM	00593



ITEM NO	PART NUMBER	DESCRIPTION	QTY.	REV
1	5570053	PE FLEX TUBE $\varnothing 34.5 \times \varnothing 29$	1386mm*	-
2	5555555	WQG1-M36/AD34.5 CONNECTOR	2	-
3	5535050	PLASTIC NUT M36 x 2	2	-

DO NOT SCALE DRAWING		NAME	DATE		
DIMENSIONS ARE IN MM TOLERANCES: 0. = ± 1.5 0.0 = ± 1.0 0.00 = ± 0.25 0.000 = ± 0.13 ANGULAR: MACH $\pm 2^\circ$ SURFACE FINISH 1.6 ISO Ra μm FOR MACHINED SURFACES UNLESS OTHERWISE SPECIFIED MATERIAL:		DRAWN	AC	12/24/2007	1645 LEMONWOOD DR. SANTA PAULA, CA 93060
		CHECKED			
		THIRD ANGLE PROJECTION		TITLE:	
				FLEX TUBE ASSEMBLY 1320mm	
		SIZE	DWG. NO.	REV	
		A	5570050	B	
		SCALE: 1:1			SHEET 1 OF 1

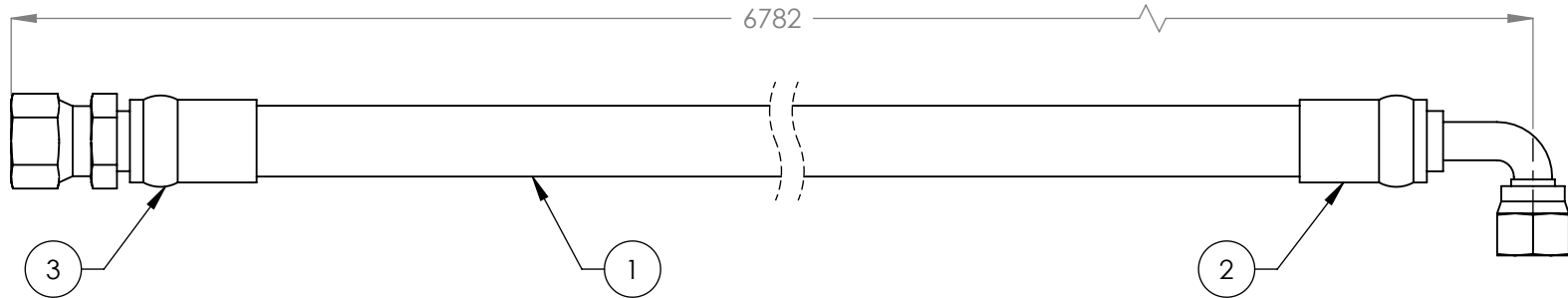
NOTE: UNLESS OTHERWISE SPECIFIED.

- FOR ITEM 1 SPECIFICATIONS REFER TO PART SPECIFICATION FORM
- (*)ITEM 1 QTY FOR REFERENCE ONLY

NEXT ASSEMBLY
HD/HDS/HDSO
SERIES

PROPRIETARY AND CONFIDENTIAL
 THE INFORMATION CONTAINED IN THIS DRAWING IS
 THE SOLE PROPERTY OF BENDPAK INC. ANY
 REPRODUCTION IN PART OR AS A WHOLE WITHOUT
 THE WRITTEN PERMISSION OF BENDPAK INC. IS
 PROHIBITED.

REVISION				
REV	DESCRIPTION	DATE	EDITED BY	ECO#
A	PRODUCTION RELEASE	08/27/2008	AC	00235
A-001	UPDATED NEXT ASSEMBLY	07/31/2009	TM	00241
A-002	UPDATED NEXT ASSEMBLY	06/11/2010	TM	00371
A-003	UPDATED NEXT ASSEMBLIES	09/26/2012	TM	00545
A-004	UPDATED NEXT ASSEMBLIES	05/20/2013	TM	00593
A-005	UPDATED NEXT ASSEMBLIES	04/29/2014	TM	00646
A-006	UPDATED NEXT ASSEMBLIES	06/04/2015	TM	00683



ITEM NO	PART NUMBER	DESCRIPTION	QTY.	REV
1	5570116	Ø10 ID HYDRAULIC HOSE	6744*mm	-
2	5550337	FTG ELB -06 CRIMP x -06 JIC	1	-
3	5550336	FTG NPL -06 CRIMP x -06 JIC	1	-

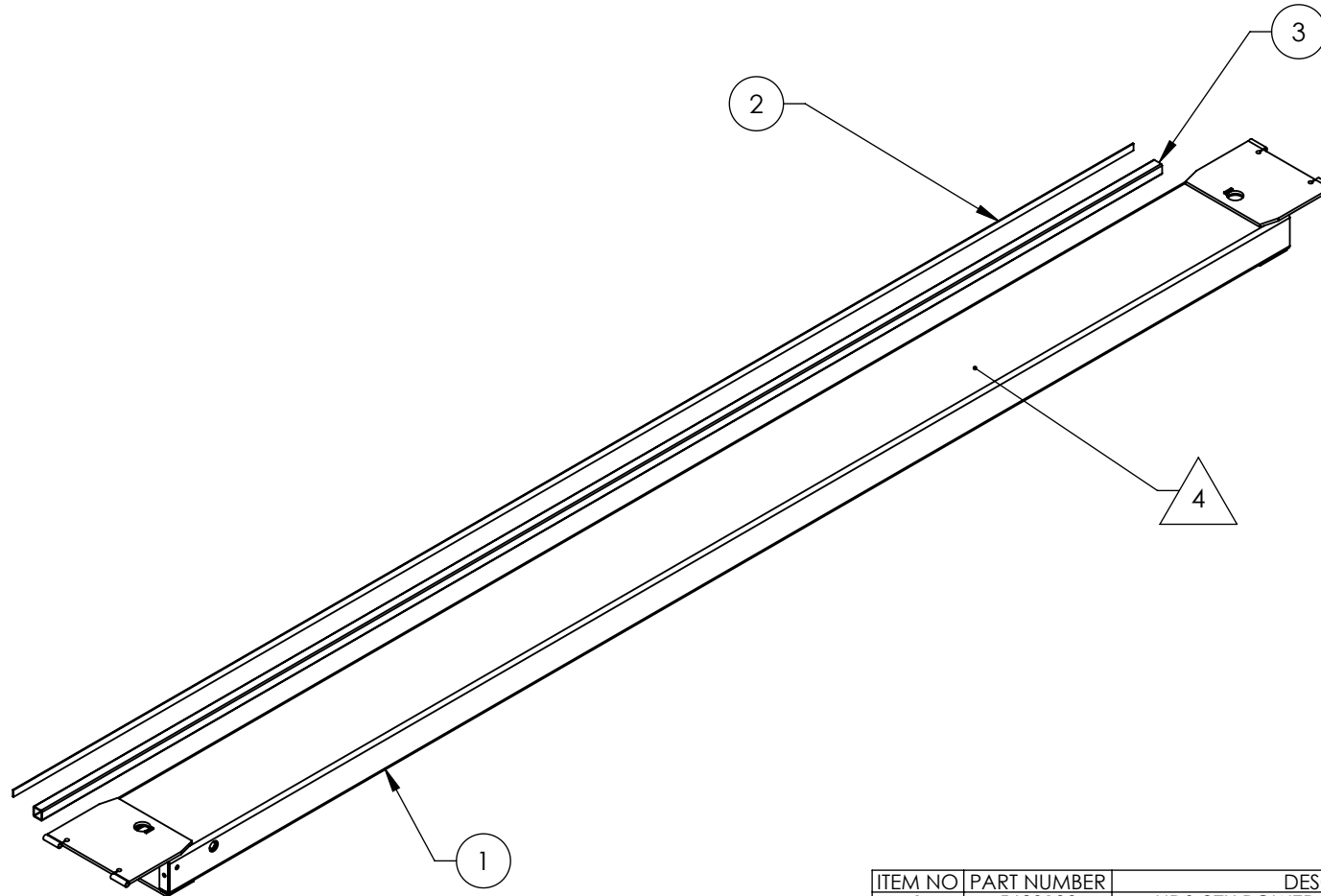
DO NOT SCALE DRAWING		NAME	DATE	1645 LEMONWOOD DR. SANTA PAULA, CA 93060
		DRAWN	AC 08/27/2008	
		CHECKED	CA 08/27/2015	
DIMENSIONS ARE IN MM TOLERANCES: 0. = ±1.5 0.0 = ±1.0 0.00 = ±0.25 0.000 = ±0.13		THIRD ANGLE PROJECTION 		TITLE: HYD. HOSE ASSY Ø10 x 6782mm
ANGULAR: MACH±2° SURFACE FINISH 1.6 ISO Ra µm FOR MACHINED SURFACES UNLESS OTHERWISE SPECIFIED		PROPRIETARY AND CONFIDENTIAL THE INFORMATION CONTAINED IN THIS DRAWING IS THE SOLE PROPERTY OF BENDPAK INC. ANY REPRODUCTION IN PART OR AS A WHOLE WITHOUT THE WRITTEN PERMISSION OF BENDPAK INC. IS PROHIBITED.		SIZE DWG. NO. A 5570900 REV A
SCALE: 1:2			SHEET 1 OF 1	

NEXT ASSEMBLY
5250175
5250176
5250179
5250180
5250364


NOTE: UNLESS OTHERWISE SPECIFIED.

- FOR ITEM 1 SPECIFICATIONS REFER TO PART SPECIFICATION FORM
- (*)ITEM 1 QTY FOR REFERENCE ONLY



REVISION				
REV	DESCRIPTION	DATE	EDITED BY	ECO#
D	UPDATED BOM REVISION	01/13/2011	TM	00431
E	UPDATED BOM REVISION	12/06/2012	TM	00545
F	UPDATED BOM REVISION	05/15/2013	TM	00593
G	UPDATED BOM REVISION	12/8/2015	JM	00724



NOTE: UNLESS OTHERWISE SPECIFIED.

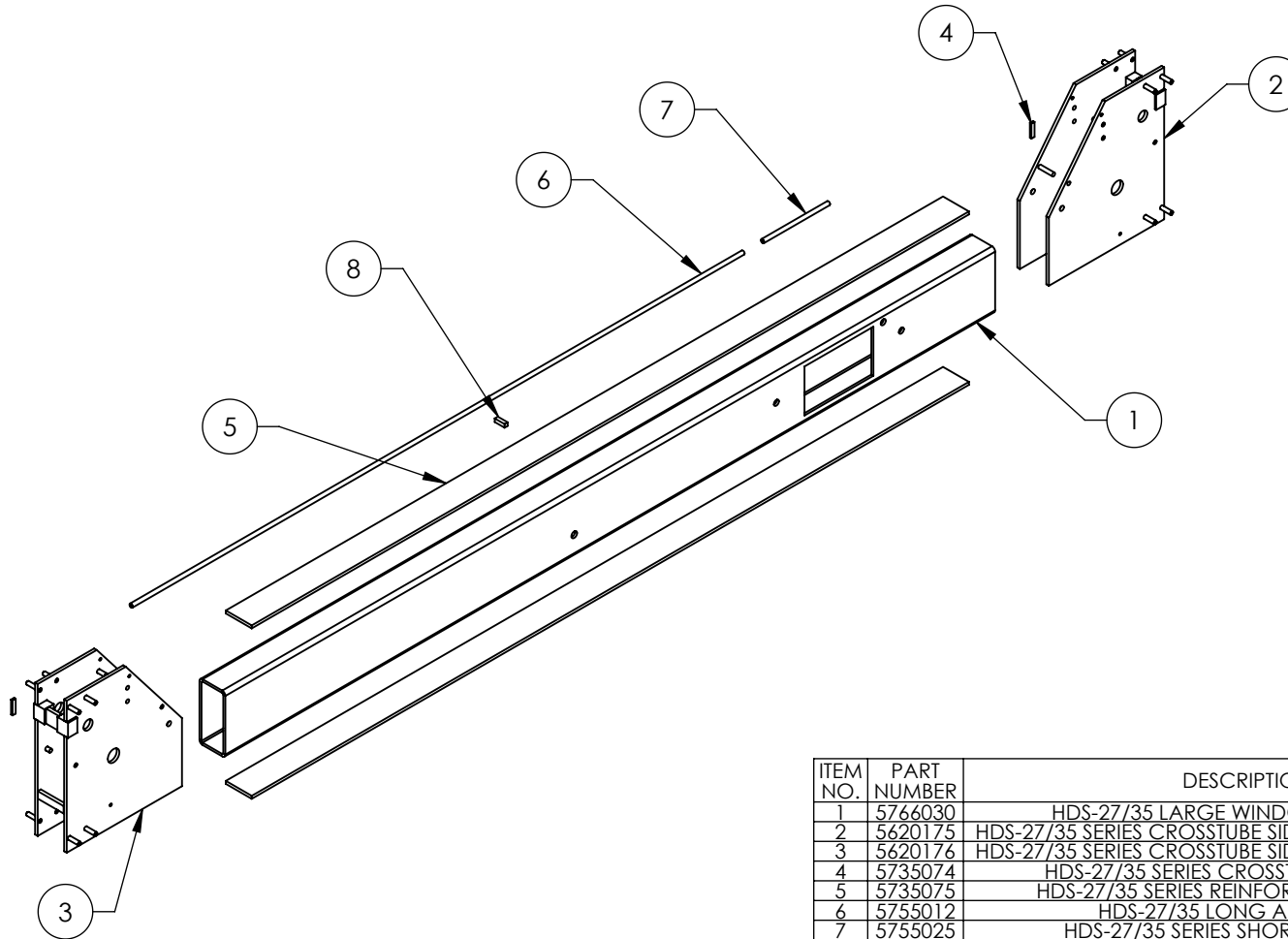
1. BREAK AND DEBURR ALL SHARP EDGES 0.3mm
2. REMOVE ALL WELD SPLATTER
3. PAINT BENDPAK BLUE
-  APPLY #30 GRIT ALUMINUM OXIDE WHEN PAINTING TO TOP ONLY

ITEM NO	PART NUMBER	DESCRIPTION	QTY	REV
1	5620198	HDS-27X POWER SIDE RAMP WELDMENT	1	F
2	5735082	HD/HDS-27X/35X ROLLING JACK PLATE	1	B
3	5765019	HD/HDS-27X/35X ROLLING JACK TUBE	1	B



DO NOT SCALE DRAWING		NAME	DATE	 BendPak. 1645 LEMONWOOD DR. SANTA PAULA, CA 93060
DIMENSIONS ARE IN MM TOLERANCES: 0. = ±1.5 0.0 = ±0.5 ANGULAR: 0. = ±2° SURFACE FINISH 1.6 ISO R _a μm FOR MACHINED SURFACES UNLESS OTHERWISE SPECIFIED MATERIAL: - SIZE: -		DRAWN	GJZ 10/21/2008	
		CHECKED		
		THIRD ANGLE PROJECTION		TITLE: HDS-27X POWER SIDE RAMP WELDMENT
				SIZE DWG. NO.
		PROPRIETARY AND CONFIDENTIAL THE INFORMATION CONTAINED IN THIS DRAWING IS THE SOLE PROPERTY OF BENDPAK INC. ANY REPRODUCTION IN PART OR AS A WHOLE WITHOUT THE WRITTEN PERMISSION OF BENDPAK INC. IS PROHIBITED.		REV
		A 5600141		G
		SCALE: 1:35		SHEET 1 OF 2

NEXT ASSEMBLY
5215157

REVISION				
REV	DESCRIPTION	DATE	EDITED BY	ECO#
G	UPDATED BOM REVISIONS	04/21/2014	TM	00646
H	UPDATED BOM REVISION	09/22/2014	TM	00666
J	UPDATED BOM REVISION	01/04/2016	JM	00741



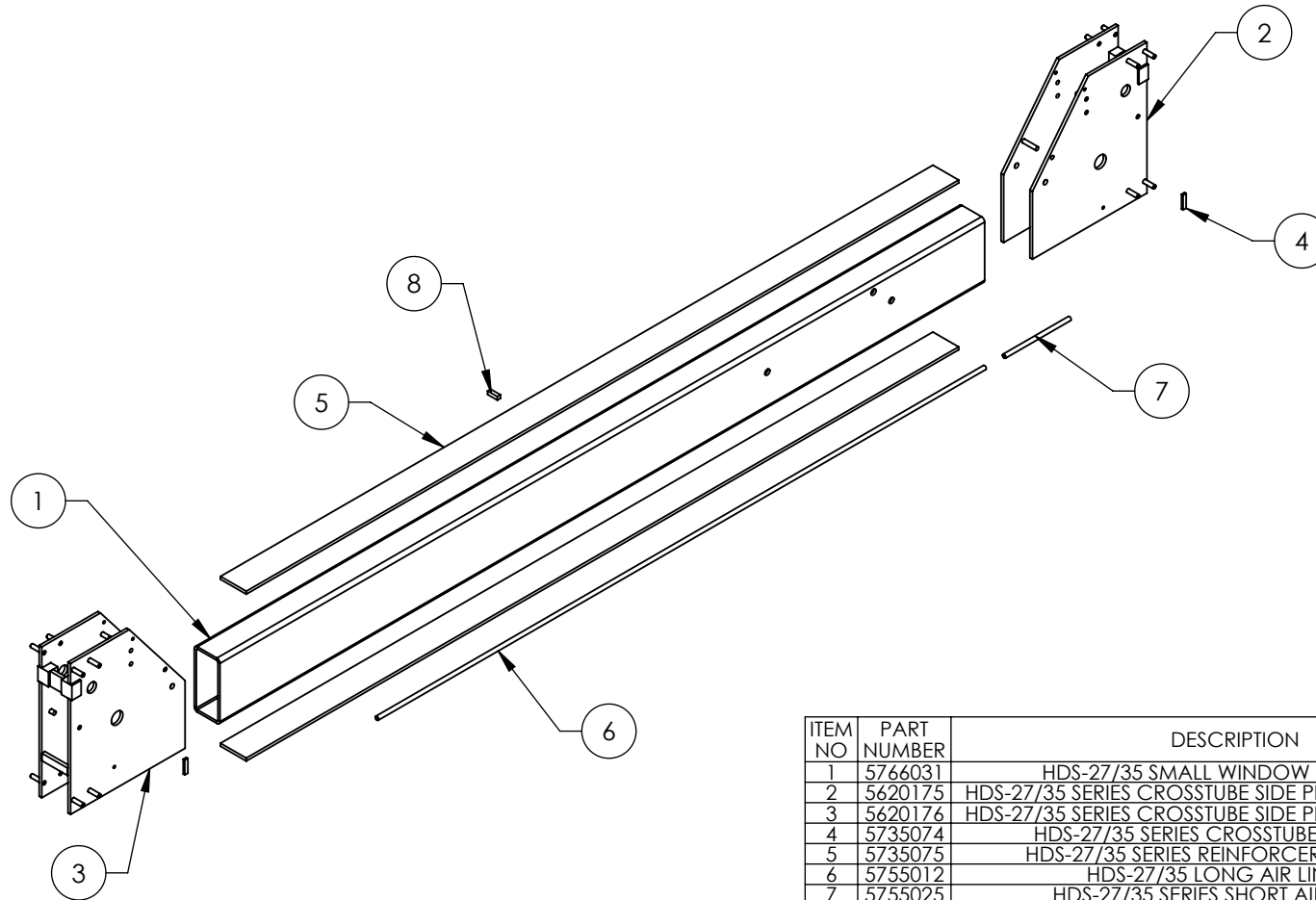
ITEM NO.	PART NUMBER	DESCRIPTION	QTY	REV
1	5766030	HDS-27/35 LARGE WINDOW CROSSTUBE	1	A
2	5620175	HDS-27/35 SERIES CROSSTUBE SIDE PLATE WELDMENT #1	1	H
3	5620176	HDS-27/35 SERIES CROSSTUBE SIDE PLATE WELDMENT #2	1	H
4	5735074	HDS-27/35 SERIES CROSSTUBE SHAFT STOP	2	B
5	5735075	HDS-27/35 SERIES REINFORCER, CROSSTUBE	2	A
6	5755012	HDS-27/35 LONG AIR LINE PIPE	1	B
7	5755025	HDS-27/35 SERIES SHORT AIR LINE PIPE	1	B
8	5760003	HD-12/14 RAMP STOP	1	D

DO NOT SCALE DRAWING	NAME	DATE	 BendPak <small>POWERING AUTOMOTIVE SERVICE SOLUTIONS</small>	1645 LEMONWOOD DR. SANTA PAULA, CA 93060	
	DRAWN	GJZ 09/18/2008			
	CHECKED				
	THIRD ANGLE PROJECTION		TITLE: HDS-27/35 SERIES LARGE WINDOW CROSSTUBE WELDMENT		
			SIZE DWG. NO.		REV
			A 5600279		J
DIMENSIONS ARE IN MM TOLERANCES: 0. = ±1.5 0.0 = ±0.5 ANGULAR: 0. = ±2° SURFACE FINISH 1.6 ISO Ra µm FOR MACHINED SURFACES UNLESS OTHERWISE SPECIFIED			PROPRIETARY AND CONFIDENTIAL THE INFORMATION CONTAINED IN THIS DRAWING IS THE SOLE PROPERTY OF BENDPAK INC. ANY REPRODUCTION IN PART OR AS A WHOLE WITHOUT THE WRITTEN PERMISSION OF BENDPAK INC. IS PROHIBITED.		
NEXT ASSEMBLY 5215598 5215608			SCALE: 1:20		SHEET 1 OF 2



NOTE: UNLESS OTHERWISE SPECIFIED.

1. BREAK AND DEBURR ALL SHARP EDGES 0.3mm
2. REMOVE ALL WELD SPLATTER
3. PAINT BENDPAK BLUE

REVISION				
REV	DESCRIPTION	DATE	EDITED BY	ECO#
G	UPDATED BOM REVISION	04/21/2014	TM	00646
H	UPDATED BOM REVISION	09/22/2014	TM	00666
J	UPDATED BOM REVISION	01/04/2016	JM	00741



ITEM NO	PART NUMBER	DESCRIPTION	QTY	REV
1	5766031	HDS-27/35 SMALL WINDOW CROSSTUBE	1	A
2	5620175	HDS-27/35 SERIES CROSSTUBE SIDE PLATE WELDMENT #1	1	H
3	5620176	HDS-27/35 SERIES CROSSTUBE SIDE PLATE WELDMENT #2	1	H
4	5735074	HDS-27/35 SERIES CROSSTUBE SHAFT STOP	2	B
5	5735075	HDS-27/35 SERIES REINFORCER, CROSSTUBE	2	A
6	5755012	HDS-27/35 LONG AIR LINE PIPE	1	B
7	5755025	HDS-27/35 SERIES SHORT AIR LINE PIPE	1	B
8	5760003	HD-12/14 RAMP STOP	1	D

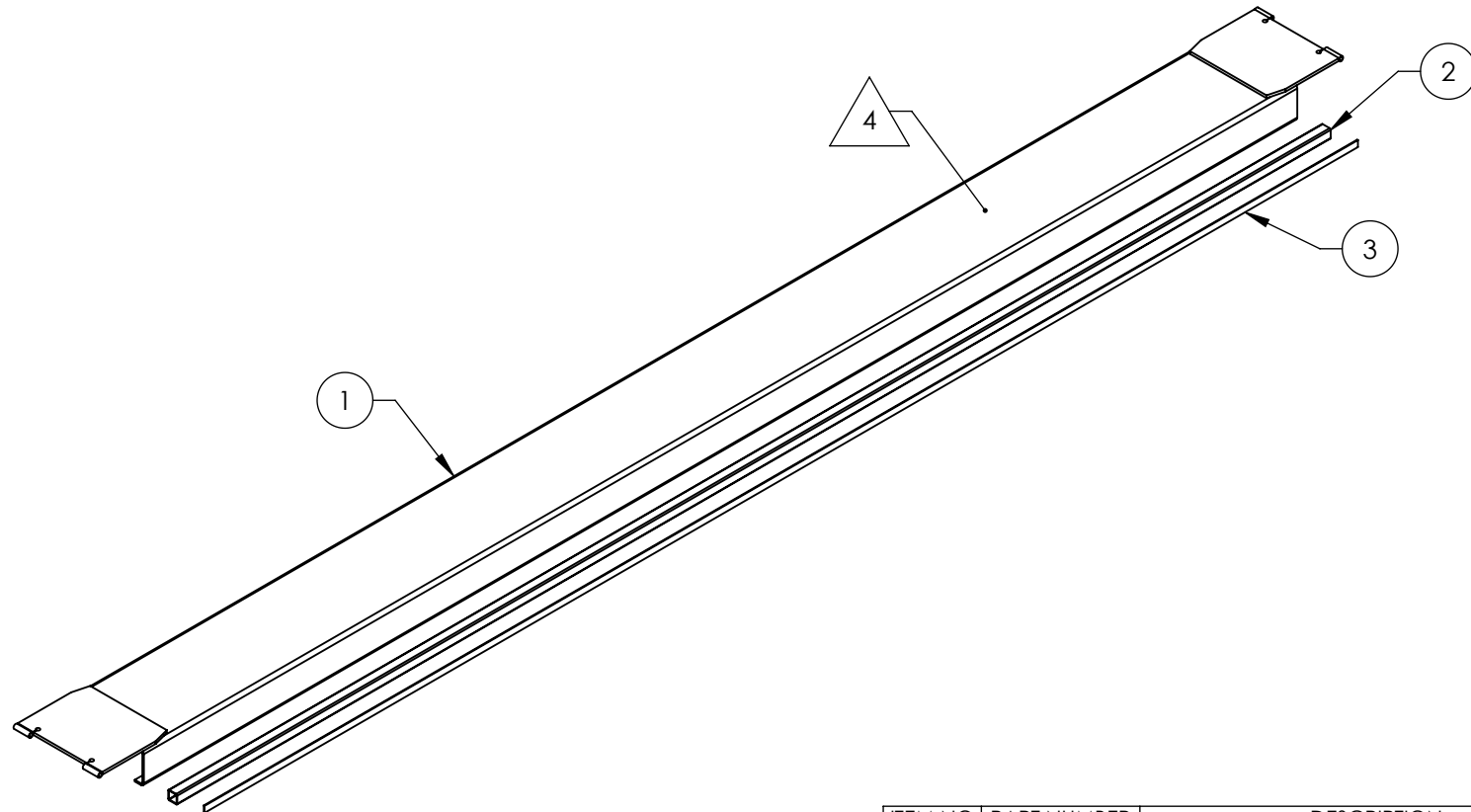
DO NOT SCALE DRAWING	NAME	DATE	 BendPak <small>PROVIDING AUTOMOTIVE SERVICE SOLUTIONS</small>	1645 LEMONWOOD DR. SANTA PAULA, CA 93060	
	DRAWN	GJZ 09/18/2008			
	CHECKED				
	THIRD ANGLE PROJECTION		TITLE: HDS-27/35 SERIES SMALL WINDOW CROSSTUBE WELDMENT		
			SIZE DWG. NO.		REV
	DIMENSIONS ARE IN MM TOLERANCES: 0. = ±1.5 0.0 = ±0.5 ANGULAR: 0. = ±2° SURFACE FINISH 1.6 ISO Ra µm FOR MACHINED SURFACES UNLESS OTHERWISE SPECIFIED		A 5600293		J
PROPRIETARY AND CONFIDENTIAL THE INFORMATION CONTAINED IN THIS DRAWING IS THE SOLE PROPERTY OF BENDPAK INC. ANY REPRODUCTION IN PART OR AS A WHOLE WITHOUT THE WRITTEN PERMISSION OF BENDPAK INC. IS PROHIBITED.			SCALE: 1:20		SHEET 1 OF 2

NOTE: UNLESS OTHERWISE SPECIFIED.

- BREAK AND DEBURR ALL SHARP EDGES 0.3mm
- REMOVE ALL WELD SPLATTER
- PAINT BENDPAK BLUE

NEXT ASSEMBLY
5215604
5215609

		REVISION			
REV	DESCRIPTION	DATE	EDITED BY	ECO#	
B	UPDATED BOM REVISIONS	11/02/2009	AC	00312	
C	UPDATED BOM REVISION	01/19/2011	TM	00431	
C-001	UPDATED NEXT ASSEMBLY	05/21/2013	TM	00593	
C-002	UPDATED NEXT ASSEMBLY	09/26/2014	TM	00666	
C-003	UPDATED NEXT ASSEMBLY	06/04/2015	TM	00683	
D	UPDATED BOM REVISION	10/07/2015	TM	00724	



ITEM NO	PART NUMBER	DESCRIPTION	QTY	REV
1	5620204	HDS-27X OFF SIDE RAMP WELDMENT	1	C
2	5765019	HD/HDS-27X/35X ROLLING JACK TUBE	1	B
3	5735082	HD/HDS-27X/35X ROLLING JACK PLATE	1	B

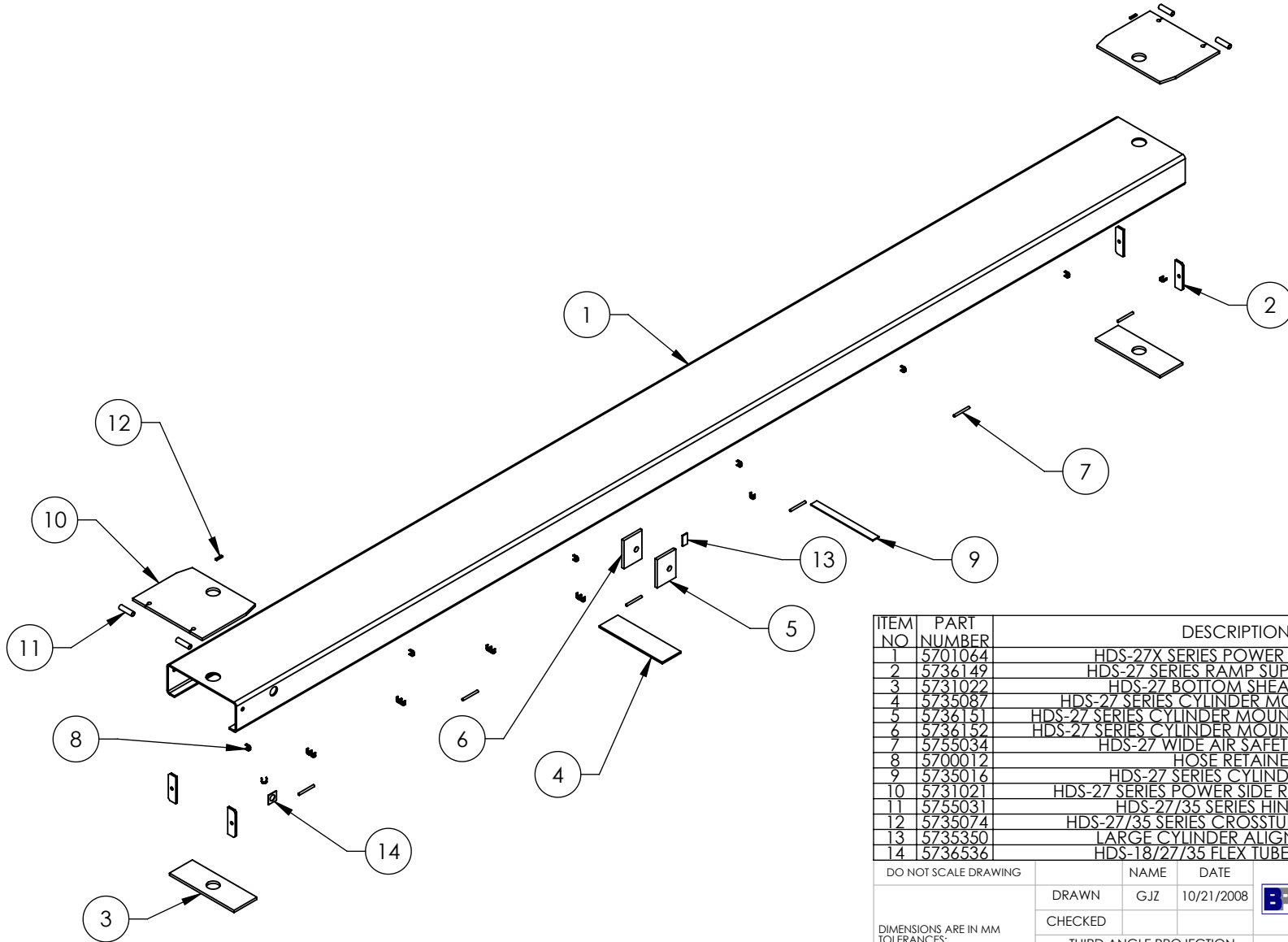
DO NOT SCALE DRAWING		NAME	DATE	1645 LEMONWOOD DR. SANTA PAULA, CA 93060
DIMENSIONS ARE IN MM TOLERANCES: 0. = ±1.5 0.0 = ±0.5 ANGULAR: 0. = ±2° SURFACE FINISH 1.6 ISO Ra µm FOR MACHINED SURFACES UNLESS OTHERWISE SPECIFIED		DRAWN	AC 04/22/2009	
		CHECKED		
		THIRD ANGLE PROJECTION		TITLE: HDS-27X OFF SIDE RAMP WELDMENT
				SIZE DWG. NO. REV
				A 5620110 D
		PROPRIETARY AND CONFIDENTIAL THE INFORMATION CONTAINED IN THIS DRAWING IS THE SOLE PROPERTY OF BENDPAK INC. ANY REPRODUCTION IN PART OR AS A WHOLE WITHOUT THE WRITTEN PERMISSION OF BENDPAK INC. IS PROHIBITED.		SCALE: 1:35 SHEET 1 OF 2

NOTE: UNLESS OTHERWISE SPECIFIED.

1. BREAK AND DEBURR ALL SHARP EDGES 0.3mm
2. REMOVE ALL WELD SPLATTER
3. PAINT BENDPAK BLUE
- APPLY #30 GRIT ALUMINUM OXIDE WHEN PAINTING TO TOP ONLY

NEXT ASSEMBLY
5245011

		REVISION		
REV	DESCRIPTION	DATE	EDITED BY	ECO#
D	ADDED 5736536, UPDATED BOM REVISION	12/06/2012	TM	00545
E	ADDED (1) 5700012	05/15/2013	TM	00593
F	UPDATED TITLE TO REFLECT WHERE USED, ADDED 6mm WELD pg 4, UPDATED BOM REVISIONS AND NEXT ASSEMBLIES	09/24/2015	TM	00724



ITEM NO	PART NUMBER	DESCRIPTION	QTY	REV
1	5701064	HDS-27X SERIES POWER SIDE RAMP	1	C
2	5736149	HDS-27 SERIES RAMP SUPPORT PLATE	4	A
3	5731022	HDS-27 BOTTOM SHEAVE PLATE	2	A
4	5735087	HDS-27 SERIES CYLINDER MOUNTING PLATE	1	B
5	5736151	HDS-27 SERIES CYLINDER MOUNTING BLOCK (R.H.)	1	A
6	5736152	HDS-27 SERIES CYLINDER MOUNTING BLOCK (L.H.)	1	A
7	5755034	HDS-27 WIDE AIR SAFETY TROUGH	6	A
8	5700012	HOSE RETAINER	17	B
9	5735016	HDS-27 SERIES CYLINDER STRAP	1	B
10	5731021	HDS-27 SERIES POWER SIDE RAMP END PLATE	2	A
11	5755031	HDS-27/35 SERIES HINGE TUBE	4	B
12	5735074	HDS-27/35 SERIES CROSSTUBE SHAFT STOP	2	B
13	5735350	LARGE CYLINDER ALIGNMENT KEY	1	A
14	5736536	HDS-18/27/35 FLEX TUBE NUT PLATE	1	A

DO NOT SCALE DRAWING

NAME	DATE
DRAWN GJZ	10/21/2008
CHECKED	

BendPak 1645 LEMONWOOD DR.
SANTA PAULA, CA 93060

DIMENSIONS ARE IN MM
TOLERANCES:
0. = ±1.5
0.0 = ±0.5

ANGULAR: 0. = ±2°

SURFACE FINISH 1.6 ISO Ra μm
FOR MACHINED SURFACES
UNLESS OTHERWISE SPECIFIED

THIRD ANGLE PROJECTION



TITLE: HDS-27X POWER SIDE RAMP WELDMENT

SIZE DWG. NO.	REV
A 5620198	F

SCALE: 1:35

SHEET 1 OF 4

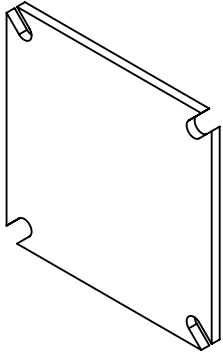
NOTE: UNLESS OTHERWISE SPECIFIED.

- BREAK AND DEBURR ALL SHARP EDGES 0.3mm
- REMOVE ALL WELD SPLATTER

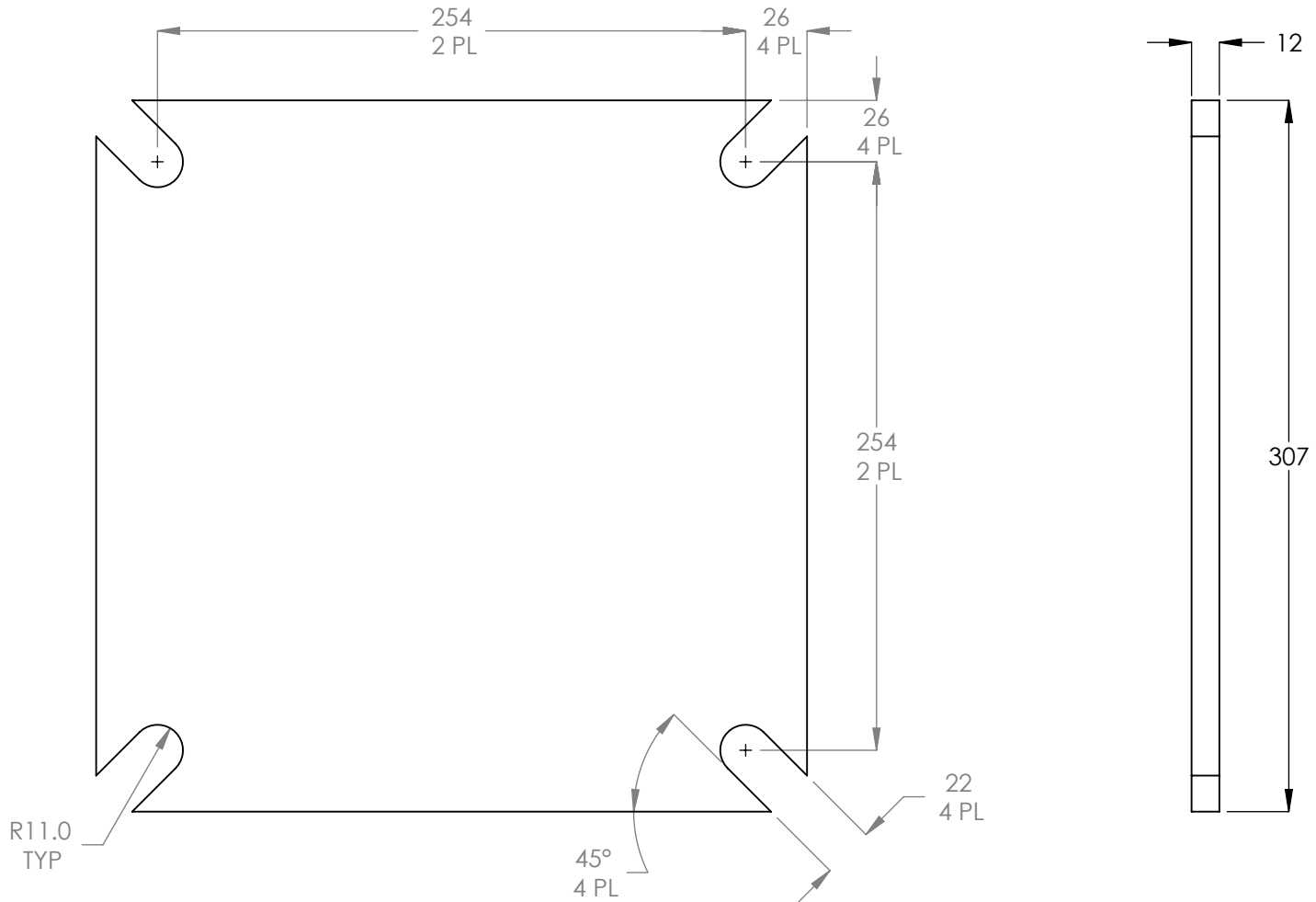
NEXT ASSEMBLY
5600141

PROPRIETARY AND CONFIDENTIAL
THE INFORMATION CONTAINED IN THIS DRAWING IS THE SOLE PROPERTY OF BENDPAK INC. ANY REPRODUCTION IN PART OR AS A WHOLE WITHOUT THE WRITTEN PERMISSION OF BENDPAK INC. IS PROHIBITED.

		REVISION		
REV	DESCRIPTION	DATE	EDITED BY	ECO#
A	DERIVED FROM H-111, PRODUCTION RELEASE	09/15/2008	GJZ	00241
A-001	UPDATED NEXT ASSEMBLY	07/30/2012	TM	00535
A-002	UPDATED NEXT ASSEMBLIES	06/04/2015	TM	00683
B	UPDATED TITLE TO REFLECT WHERE USED	09/17/2015	TM	00724



ISOMETRIC VIEW
FOR REFERENCE ONLY
DO NOT SCALE



NOTE: UNLESS OTHERWISE SPECIFIED.

- BREAK AND DEBURR ALL SHARP EDGES 0.3mm
- MATERIAL:** HR ASTM A36 OR Q235 GB/T 700
- FLAME CUT PERMISSABLE

NEXT ASSEMBLY
5600350
5600351
5600697
5600698
5600978
5600980

DO NOT SCALE DRAWING	NAME	DATE	BendPak 1645 LEMONWOOD DR. SANTA PAULA, CA 93060
	DRAWN	GJZ 09/15/2008	
	CHECKED		
	THIRD ANGLE PROJECTION		
	DIMENSIONS ARE IN MM TOLERANCES: MACHINE TO 0. = ±1.5 0.0 = ±0.5 0.00 = ±0.13 ANGULAR: MACHINE TO 0. = ±1/2° SURFACE FINISH 1.6 ISO Ra μm FOR MACHINED SURFACES UNLESS OTHERWISE SPECIFIED		
TITLE:		HDS-27/35 SERIES BASE PLATE	
SIZE	DWG. NO.	REV	
A	5730026	B	
SCALE: 1:3			SHEET 1 OF 1

PROPRIETARY AND CONFIDENTIAL
THE INFORMATION CONTAINED IN THIS DRAWING IS
THE SOLE PROPERTY OF BENDPAK INC. ANY
REPRODUCTION IN PART OR AS A WHOLE WITHOUT
THE WRITTEN PERMISSION OF BENDPAK INC. IS
PROHIBITED.

PART SPECIFICATION FORM

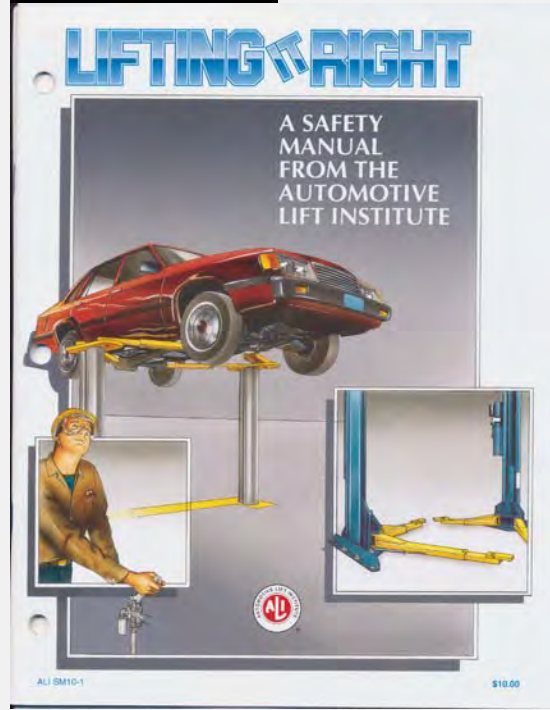
BENDPAK Number:	5900147
MRP Description:	SAFETY MANUAL ALI / SM 93-1
Date:	12/28/2010
ECO :	00431

1. Engineering Specification

Application:

ALI SAFETY MANUAL

Detailed Description:



2. Vendor Information

Approved Vendor	Vendor Part #	Contact #	Preferred Vendor
1)			

PART SPECIFICATION FORM

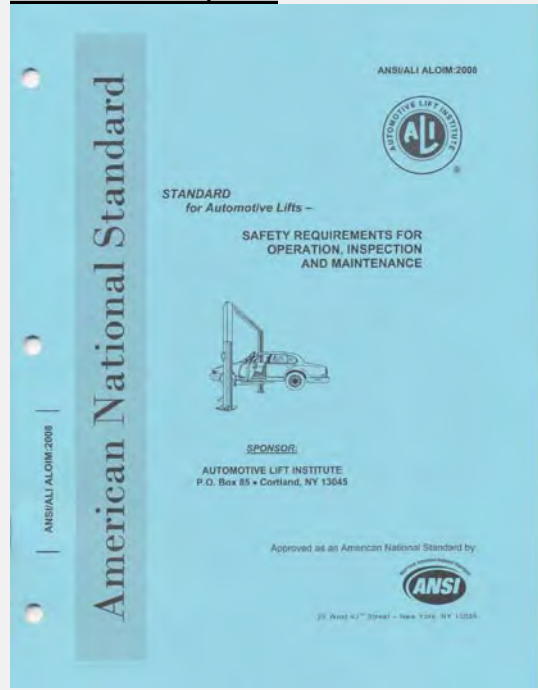
BENDPAK Number:	5900152
MRP Description:	ALIGN OIM OPERATION INSPECTION & MAINTENANCE
Date:	12/28/2010
ECO :	00431

1. Engineering Specification

Application:

ALI OPERATION INSPECTION & MAINTENANCE MANUAL

Detailed Description:



2. Vendor Information

Approved Vendor	Vendor Part #	Contact #	Preferred Vendor
1)			

PART SPECIFICATION FORM

BENDPAK Number:	5900160
MRP Description:	HDS TRUCK SERIES INSTALLATION MANUAL
Date:	07/12/2013
ECO :	00593

1. Engineering Specification

Application:

INSTALLATION MANUAL

Detailed Description:

WARNING

IMPORTANT SAFETY INSTRUCTIONS
SAVE THESE INSTRUCTIONS
 PLEASE READ THE ENTIRE CONTENTS OF THIS MANUAL PRIOR TO INSTALLATION AND OPERATION. BY PROCEEDING WITH LIFT INSTALLATION AND OPERATION YOU AGREE THAT YOU FULLY UNDERSTAND AND COMPREHEND THE FULL CONTENTS OF THIS MANUAL. FORWARD THIS MANUAL TO ALL OPERATORS. FAILURE TO OPERATE THIS EQUIPMENT AS DIRECTED MAY CAUSE INJURY OR DEATH.
 Manual REV F 06-12-13
 pep-5005180

INSTALLATION AND OPERATION MANUAL

**SUPER-DUTY
 FOUR-POST LIFTS**

- Models:**
 HDS-18
 HDS-27 / HDS-27X VER.B
 HDS-35 / HDS-35X VER.B
 HDS-40 / HDS-40X VER.B

READ FIRST



RECEIVING

The shipment should be thoroughly inspected as soon as it is received. The signed Bill of Lading is acknowledgment by the shipping carrier as receipt of this product as listed in your invoice as being in a good condition of shipment. If any of these goods listed on this Bill of Lading are missing or damaged, do not accept goods until the shipping carrier makes a notation on the freight bill of the missing or damaged goods. Do this for your own protection.

BE SAFE

Your new lift was designed and built with safety in mind. However, your overall safety can be increased with proper training and thoughtful operation on the part of the operator. DO NOT operate or repair this equipment without reading this manual and the important safety instructions shown inside. Keep this operation manual near the lift at all times. Make sure that ALL USERS read and understand this manual.

2. Vendor Information

Approved Vendor	Vendor Part #	Contact #	Preferred Vendor
1)			

PART SPECIFICATION FORM

BENDPAK Number:	5905103
MRP Description:	WARNING ALI/WL 200
Date:	05/06/2013
ECO :	00593

1. Engineering Specification

Application:

ALI 4 POST SAFETY STICKER KIT

Detailed Description:



SIZE: 11" L x 8.5" W (279mm x 216mm)

2. Vendor Information

Approved Vendor	Vendor Part #	Contact #	Preferred Vendor
1)			

PART SPECIFICATION FORM

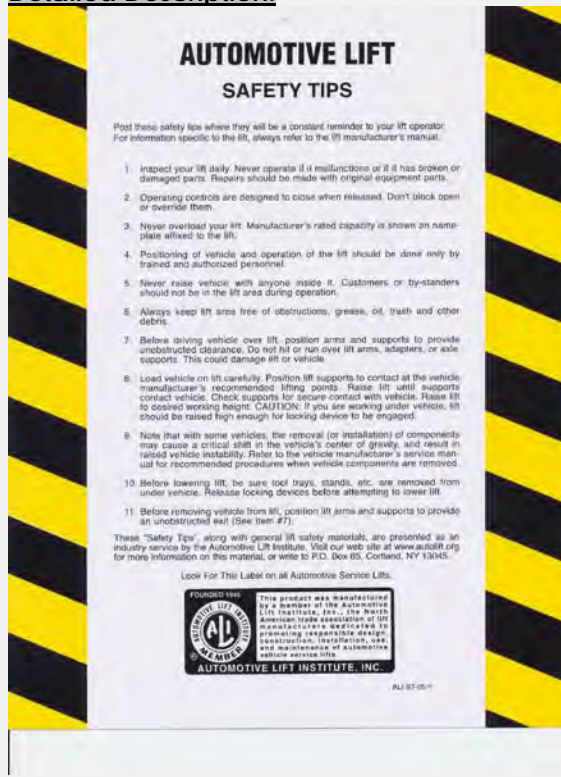
BENDPAK Number:	5905151
MRP Description:	SAFETY TIPS CARD ALI-ST 90
Date:	12/28/2010
ECO :	00431

1. Engineering Specification

Application:

ALI SAFETY TIPS

Detailed Description:



2. Vendor Information

Approved Vendor	Vendor Part #	Contact #	Preferred Vendor
1)			

PART SPECIFICATION FORM

BENDPAK Number:	5905311
MRP Description:	BENDPAK LABEL; 4 x 38" WHITE INK
Date:	05/13/2015
ECO :	00689

1. Engineering Specification

Application:

BENDPAK LABEL

Detailed Description:



SIZE: 38" L x 4.25" W (965mm x 108mm)

- Material: Yellow Represents Clear Adhesive PET
- Size: 4.25"W x 38"H
- Thickness: 4 Mil
- Finish: Polished
- Ink: U.V. protected, Opaque White
- Print Process: Silk Screen, 85 line-screen (Opaque White ink, clear adhesive PET will fill in blank areas.)
- Lamination: Clear-gloss over-laminate for abrasion, chemical, and ultra violet protection

2. Vendor Information

Approved Vendor	Vendor Part #	Contact #	Preferred Vendor
1)			

B

E

N

D

P

A

K

BENDPAK

ABOVE-GROUND LIFTS



1645 Lemonwood Drive
Santa Paula, CA 93060
U.S.A.
(805) 933-9970
www.bendpak.com

PART SPECIFICATION FORM

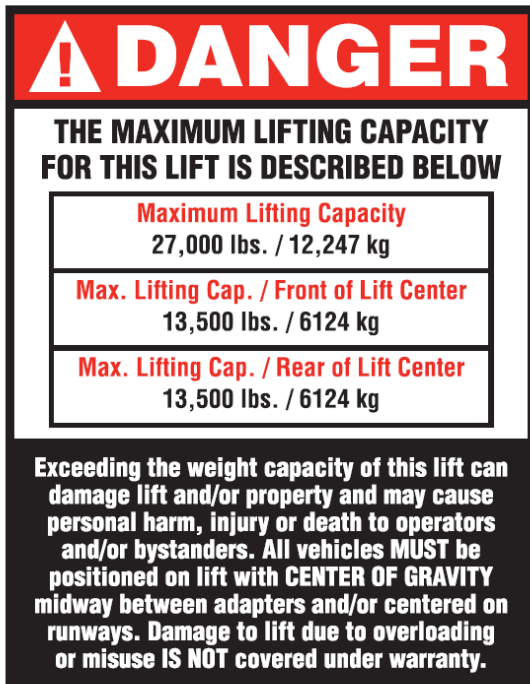
BENDPAK Number:	5905407
MRP Description:	MAX CAP DANGER 27K
Date:	05/08/2013
ECO :	00593

1. Engineering Specification

Application:

LIFT CAPACITY STICKER

Detailed Description:



SIZE: 5" L x 4" W (127mm x 100mm)

P/N 5905407

2. Vendor Information

Approved Vendor	Vendor Part #	Contact #	Preferred Vendor
1)			

! DANGER

**THE MAXIMUM LIFTING CAPACITY
FOR THIS LIFT IS DESCRIBED BELOW**

Maximum Lifting Capacity

27,000 lbs. / 12,247 kg

Max. Lifting Cap. / Front of Lift Center

13,500 lbs. / 6124 kg

Max. Lifting Cap. / Rear of Lift Center

13,500 lbs. / 6124 kg

Exceeding the weight capacity of this lift can damage lift and/or property and may cause personal harm, injury or death to operators and/or bystanders. All vehicles MUST be positioned on lift with CENTER OF GRAVITY midway between adapters and/or centered on runways. Damage to lift due to overloading or misuse IS NOT covered under warranty.

PART SPECIFICATION FORM

BENDPAK Number:	5905465
MRP Description:	MANUFACTURER LABEL
Date:	05/07/2013
ECO :	00593

1. Engineering Specification

Application:

MANUFACTURER LABEL

Detailed Description:

MFD. BY BENDPAK INC.

LIFT TYPE: SURFACE MOUNT CAPACITY: MED/HVY DTY
 POWER: ELECTRIC/HYDRAULIC ANCHORS: AS EQUIPPED
 INSTALLATION - SEE OWNERS GUIDE OR CONTACT FACTORY

SIZE: 5.125" L x 5.125" W (130mm x 130mm)

SHIPPING DAMAGE CLAIMS

WHEN THIS EQUIPMENT IS SHIPPED, TITLE PASSES TO THE PURCHASER UPON RECEIPT FROM THE CARRIER. CONSEQUENTLY, CLAIMS FOR THE MATERIAL DAMAGED IN SHIPMENT MUST BE MADE BY THE PURCHASER AGAINST THE TRANSPORTATION COMPANY AT THE TIME SHIPMENT IS RECEIVED.

PLEASE READ ALL OPERATORS/USERS MANUAL(S) PRIOR TO INSTALLATION AND OPERATION. UNDERSTAND AND COMPREHEND THE FULL CONTENTS OF EACH MANUAL(S) PRIOR TO INSTALLATION AND OPERATION. DELIVER THE MANUAL(S) TO ALL OPERATORS. FAILURE TO OPERATE THIS EQUIPMENT AS DIRECTED MAY CAUSE INJURY OR DEATH.

IMPORTANT NOTE:

BENDPAK LIFTS ARE SUPPLIED WITH CONCRETE FASTENERS MEETING THE CRITERIA AS PRESCRIBED BY ASTM E488 - 96(2003). LIFT BUYERS ARE RESPONSIBLE FOR ANY SPECIAL REGIONAL STRUCTURAL AND/OR SEISMIC ANCHORING REQUIREMENTS SPECIFIED BY ANY OTHER AGENCIES AND/OR CODES SUCH AS THE UNIFORM BUILDING CODE (UBC) AND/OR INTERNATIONAL BUILDING CODE (IBC).



INTERNAL BAR CODE - FOR FACTORY AUDIT ONLY 34086

BPK | STYOT | P20KVR | X18576 | HVY DTY/ GVR
 832

THE MANUFACTURE, USE, SALE OR IMPORT OF THIS PRODUCT MAY BE SUBJECT TO ONE OR MORE UNITED STATES PATENTS, OR PENDING APPLICATIONS, OWNED BY BENDPAK, INC.

ENGINEERED BY BENDPAK INC USA

MADE IN CHINA

2. Vendor Information

Approved Vendor	Vendor Part #	Contact #	Preferred Vendor
1)			

MFD. BY BENDPAK INC.

LIFT TYPE: SURFACE MOUNT CAPACITY: MED/HVY DTY

POWER: ELECTRIC/HYDRAULIC ANCHORS: AS EQUIPPED

INSTALLATION - SEE OWNERS GUIDE OR CONTACT FACTORY

SHIPPING DAMAGE CLAIMS

WHEN THIS EQUIPMENT IS SHIPPED, TITLE PASSES TO THE PURCHASER UPON RECEIPT FROM THE CARRIER. CONSEQUENTLY, CLAIMS FOR THE MATERIAL DAMAGED IN SHIPMENT MUST BE MADE BY THE PURCHASER AGAINST THE TRANSPORTATION COMPANY AT THE TIME SHIPMENT IS RECEIVED.

PLEASE READ ALL OPERATORS/USERS MANUAL(S) PRIOR TO INSTALLATION AND OPERATION. UNDERSTAND AND COMPREHEND THE FULL CONTENTS OF EACH MANUAL(S) PRIOR TO INSTALLATION AND OPERATION. DELIVER THE MANUAL(S) TO ALL OPERATORS. FAILURE TO OPERATE THIS EQUIPMENT AS DIRECTED MAY CAUSE INJURY OR DEATH.

IMPORTANT NOTE:

BENDPAK LIFTS ARE SUPPLIED WITH CONCRETE FASTENERS MEETING THE CRITERIA AS PRESCRIBED BY ASTM E488 - 96(2003). LIFT BUYERS ARE RESPONSIBLE FOR ANY SPECIAL REGIONAL STRUCTURAL AND/OR SEISMIC ANCHORING REQUIREMENTS SPECIFIED BY ANY OTHER AGENCIES AND/OR CODES SUCH AS THE UNIFORM BUILDING CODE (UBC) AND/OR INTERNATIONAL BUILDING CODE (IBC).



INTERNAL BAR CODE - FOR FACTORY AUDIT ONLY 34086

BPK	STYOT	P20KVR	X18576	HVY DTY/	GVR
					832

THE MANUFACTURE, USE, SALE OR IMPORT OF THIS PRODUCT MAY BE SUBJECT TO ONE OR MORE UNITED STATES PATENTS, OR PENDING APPLICATIONS, OWNED BY BENDPAK, INC.

ENGINEERED BY BENDPAK INC USA

MADE IN CHINA

PART SPECIFICATION FORM

BENDPAK Number:	5905556
MRP Description:	4-POST SAFETY DECAL
Date:	05/06/2013
ECO :	00593

1. Engineering Specification

Application:

4-POST SAFETY DECAL

Detailed Description:



SIZE: 23" L x 4" W (584mm x 100mm)

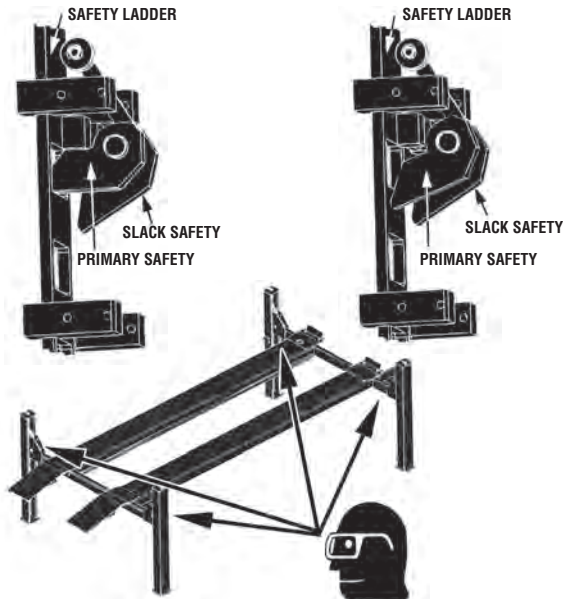
2. Vendor Information

Approved Vendor	Vendor Part #	Contact #	Preferred Vendor
1)			

! DANGER

**SAFETY LOCKS ENGAGED
– OK TO PROCEED –**

**SAFETY LOCK NOT ENGAGED
– REMAIN CLEAR –**



VISUALLY CONFIRM THAT ALL PRIMARY SAFETY LOCKS ARE ENGAGED BEFORE ENTERING WORK AREA.

Suspension components used on this lift are intended to raise and lower lift only and are NOT meant to be load-holding devices. Remain clear of elevated lift unless visual confirmation is made that all primary safety locks are fully engaged and the lift is LOWERED onto the safety locks. Refer to installation/operation manual for proper safety lock procedures and/or further instruction.

! WARNING

WIRE ROPE INSPECTION AND MAINTENANCE

- Lifting cables should be replaced every (3) three years or when visible signs of damage are apparent. DO NOT USE LIFT WITH DEFECTIVE OR WORN CABLES.
- Wire rope should be maintained in a well-lubricated condition at all times. Wire rope is only fully protected when each wire strand is lubricated both internal and external. Excessive wear will shorten the life of the wire rope. The factory suggests wire rope lubricant that penetrates to the core of the rope and provides long-term lubrication between each individual strand. In order to make sure that the inner layers of the rope remain well lubricated, lubrication should be carried out at intervals not exceeding three (3) months during operation.
- All sheaves and guide rollers in contact with the moving wire rope should be given regular visual checks for surface wear and lubricated to make sure that they run freely. This operation should be carried out at appropriate intervals generally not exceeding three (3) months during operation. For all sheave axles, the factory recommends standard wheel bearing grease. For all sheaves and/or guide rollers, the factory recommends 90-WT gear oil or similar heavy lubricant applied by any method including pump/spray dispensing, brush, hand and/or swabbing.

Failure to read, understand and follow these instructions may cause death or serious injury. Read and understand these instructions before using lift.

IMPORTANT OPERATION / MAINTENANCE INSTRUCTIONS - PLEASE READ

TO RAISE LIFT

- ✓ Position vehicle tires at the center of each runway.
- ✓ Set parking brake or use wheel chock to hold vehicle in position.
- ✓ Before raising vehicle, be sure all personnel are clear of lift and surrounding area. Pay careful attention to overhead clearances.
- ✓ Raise lift to desired height by pressing push button on power unit.
- ✓ Maintain visual contact with vehicle and surrounding area at all times while lowering lift.
- ✓ **STOP IMMEDIATELY** if load shifts or becomes unlevel.
- ✓ After vehicle is raised to desired height, lower lift onto the nearest safety lock. Do not allow cables to become excessively slack.
- ✓ **ALWAYS INSURE ALL PRIMARY SAFETY LOCKS ARE ENGAGED** before entering work area.

TO LOWER LIFT

- ✓ Before lowering vehicle, be sure all personnel, tools and equipment are clear of lift and surrounding area.
- ✓ Raise lift by pressing RAISE BUTTON on power unit. Elevate lift at least two inches to allow adequate clearance for locks to clear.
- ✓ Press push button AIR SAFETY VALVE and HOLD.
- ✓ Lower vehicle by pressing power unit lowering handle until lift has descended completely.
- ✓ When lowering lift **PAY CAREFUL ATTENTION** that all personnel and objects are kept clear.
- ✓ **ALWAYS** keep a visual line of site on lift **AT ALL TIMES**.
- ✓ **ALWAYS** make sure that **ALL LOCKS** are disengaged. If one of the locks inadvertently engages on descent, lift and/or vehicle may disrupt causing personal injury or death.

REQUIRED MONTHLY MAINTENANCE

- ✓ **ALWAYS** consult operation manual for factory recommended maintenance.
- ✓ Adjust lift cables to ensure lift raises level and safety locks engage simultaneously.
- ✓ Check all chain/cable connections, bolts and pins to insure proper mounting.
- ✓ Visually inspect safety locks for proper operation.
- ✓ Visually inspect concrete floor. **DO NOT USE LIFT** if concrete foundation shows signs of deterioration.
- ✓ Inspect all anchor bolts and retighten if necessary.
- ✓ Check columns for squareness and plumb.
- ✓ Inspect all bolts and/or fasteners making sure they are properly secured.
- ✓ Make a visual inspection of **ALL MOVING PARTS** and check for excessive signs of wear.
- ✓ Replace **ALL FAULTY PARTS** before lift is put back into operation.

! WARNING

1. **WARNING:** If cement anchor bolts are loose, or any component of the lift is found to be defective, **DO NOT USE LIFT!**
2. Never operate the lift with any person or equipment below.
3. Never exceed rated capacity.
4. Always insure safety locks are engaged before any attempt is made to work on or near vehicle.
5. Never leave lift in an elevated position unless the safety locks are engaged.
6. Do not permit electric motor to get wet! Motor damage caused by dampness is not covered under warranty.

PART SPECIFICATION FORM

BENDPAK Number:	5905940
MRP Description:	PRODUCT DATA LABEL
Date:	05/06/2013
ECO :	00593

1. Engineering Specification

Application:

PRODUCT DATA LABEL

Detailed Description:



SANTA PAULA, CA USA
WWW.BENDPAK.COM

LIFT TYPE: SURFACE MOUNT CAP: MED/HVY DTY MFG. BPK SEE DATA PLATE FOR PRODUCT DETAILS
 POWER: ELECTRIC/HYDRAULIC INSTALLATION - SEE OWNERS GUIDE OR CONTACT FACTORY

SAFETY INSTRUCTIONS: IF ATTACHMENTS, ACCESSORIES OR CONFIGURATION MODIFYING COMPONENTS THAT ARE LOCATED IN THE LOAD PATH, AFFECT OPERATION OF THE LIFT, AFFECT THE LIFT ELECTRICAL LISTING OR AFFECT INTENDED VEHICLE ACCOMMODATION ARE USED ON THIS LIFT AND, IF THEY ARE NOT CERTIFIED FOR USE ON THIS LIFT, THEN THE CERTIFICATION OF THIS LIFT SHALL BECOME NULL AND VOID. CONTACT THE PARTICIPANT FOR INFORMATION PERTAINING TO CERTIFIED ATTACHMENTS, ACCESSORIES OR CONFIGURATION MODIFYING COMPONENTS.

BENDPAK LIFTS ARE SUPPLIED WITH CONCRETE FASTENERS MEETING THE CRITERIA AS PRESCRIBED BY ASTM E488 - 96(2003). LIFT BUYERS ARE RESPONSIBLE FOR ANY SPECIAL REGIONAL STRUCTURAL AND/OR SEISMIC ANCHORING REQUIREMENTS SPECIFIED BY ANY OTHER AGENCIES AND/OR CODES SUCH AS THE UNIFORM BUILDING CODE (UBC) AND/OR INTERNATIONAL BUILDING CODE (IBC).

THE MANUFACTURE, USE, SALE OR IMPORT OF THIS PRODUCT MAY BE SUBJECT TO ONE OR MORE UNITED STATES PATENTS, OR PENDING APPLICATIONS, OWNED BY BENDPAK, INC.
 DO NOT REMOVE ENGINEERED BY BENDPAK INC. USA MADE IN CHINA

SIZE: 2.3" L x 4.5" W (58mm x 114mm)

2. Vendor Information

Approved Vendor	Vendor Part #	Contact #	Preferred Vendor
1)			

PART SPECIFICATION FORM

BENDPAK Number:	5905953
MRP Description:	LABEL D (4-POST LIFTS CE)
Date:	12/04/2015
ECO :	00724

1. Engineering Specification

Application:

DATA SERIAL TAG, 4-POST LIFTS, CE

Detailed Description:


Santa Paula, CA USA
www.bendpak.com

MODEL NUMBER	SERIAL NUMBER
LIFT CAPACITY	DATE OF MFG.
ROLLING JACK MAX CAP.	MAX PSI / BAR

VOLTAGE

<input type="checkbox"/> 110-240VAC, 50-60 Hz, 1 Ph	<input type="checkbox"/> 208-440VAC, 50-60 Hz, 3 Ph
<input type="checkbox"/> 208-240VAC, 50-60 Hz, 1 Ph	<input type="checkbox"/> 208-440VAC, 50-60 Hz, 3 Ph



DANGER!
Disconnect Power
Before Servicing

CE ENE PM 5905953

SIZE: 3.38" L x 3.38" W
(85.7mm x 85.7mm)

2. Vendor Information (Or for Reference)

Approved Vendor	Vendor Part #	Contact #	Preferred Vendor
1)			
2)			
OR BENDPAK ENGINEERING APPROVED EQUIVALENT			



Santa Paula, CA USA
www.bendpak.com

MODEL NUMBER

SERIAL NUMBER

LIFT CAPACITY

DESCRIPTION

ROLLING JACK MAX CAP.

MAX PSI / BAR

VOLTAGE

110-240VAC, 50-60 Hz, 1 Ph

380-415VAC, 50-60 Hz, 3 Ph

208-240VAC, 50-60 Hz, 1 Ph

208-440VAC, 50-60 Hz, 3 Ph

DATE OF MFG.

WARRANTY VOID IF DATA PLATE IS REMOVED



DANGER!

Disconnect Power
Before Servicing



PN 5905953



2016
CE-Approved
4 Post Lifts
Colors & Graphics

12/31/15

CONFIDENTIAL INFORMATION.

You may not disclose, print, copy or disseminate this information.
Unauthorized use is a violation of federal criminal law.

4 Post Lifts Product Decal Positioning



Total of 4

PN 5905311

BPK Post Branding Decal-Large_5905311.pdf:

Material: Clear Adhesive PET

Size: 4.25"W x 38"H

Thickness: 4 Mil

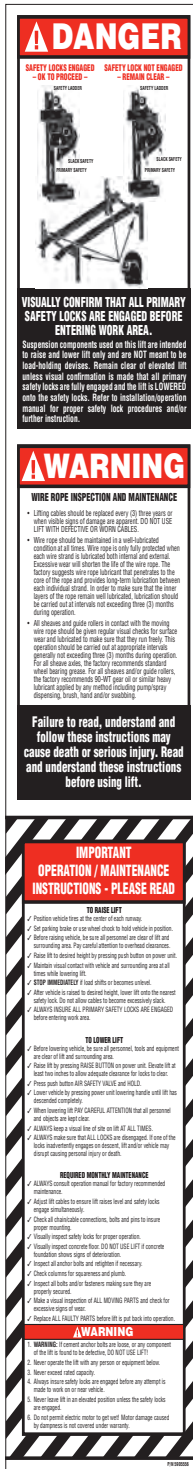
Finish: Polished

Ink: U.V. protected, Opaque White

Print Process: Silk Screen, 85 line-screen (Yellow color in file represents what should be clear PET material and SHOULD NOT print as Yellow ink. White area in file represents Opaque White ink.)

Lamination: Clear-gloss over-laminate for abrasion, chemical, and ultra violet protection

B



PN 5905556

4_Post_Safety_Decal.pdf:

Size: 4"W x 23"H

Material: White Vinyl Pressure Sensitive Adhesive

Thickness: 4 Mil

Ink: U.V. protected CMYK 2/C Process

Finish: Polished

Print Process: Offset Lithography - 200 line-screen or 300 p.p.i. for digital

Lamination: Clear-gloss over-laminate for abrasion, chemical, and ultra violet protection

C

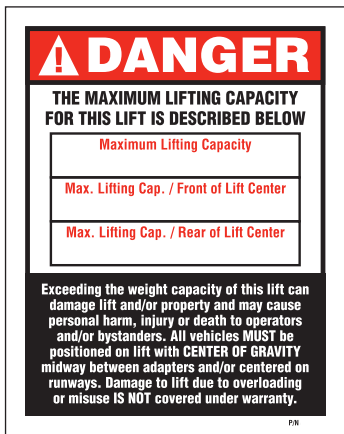


Ali_4_Post_labels.pdf:

(Order Labels from ALI)

4 Post Lifts Product Decal Positioning

***D**



***Max. Cap. Danger.pdf:**

Size: 4"W x 5"H

Material: White Vinyl Pressure Sensitive Adhesive

Thickness: 4 Mil

Ink: U.V. protected CMYK 2/C Process

Finish: Polished

Print Process: Offset Lithography - 200 line-screen or 300 p.p.i. for digital

Lamination: Clear-gloss over-laminate for abrasion, chemical, and ultra violet protection

- P/N 5905401 - Max Cap. Danger 7k
- P/N 5905695 - Max. Cap. Danger 7500
- P/N 5905402 - Max Cap. Danger 9k
- P/N 5905557 - Max. Cap. Danger 14K
- P/N 5905406 - Max Cap. Danger 18k
- P/N 5905407 - Max. Cap. Danger 27K
- P/N 5905408 - Max. Cap. Danger 35K
- P/N 5905409 - Max. Cap. Danger 40K

***E**



***NRTL Lifting Cap Label .pdf:**

Size: 4.5"W x 3.25"H

Material: White Vinyl Pressure Sensitive Adhesive

Thickness: 4 Mil

Ink: U.V. protected CMYK 2/C Process

Finish: Polished

Print Process: Offset Lithography - 200 line-screen or 300 p.p.i. for digital

Lamination: Clear-gloss over-laminate for abrasion, chemical, and ultra violet protection

- P/N 5905645 - NRTL Lifting Cap Label 7K
- P/N 5905700 - NRTL Lifting Cap Label 7500
- P/N 5905650 - NRTL Lifting Cap Label 9k
- P/N 5905665 - NRTL Lifting Cap Label 14k
- P/N 5905675 - NRTL Lifting Cap Label 18k
- P/N 5905680 - NRTL Lifting Cap Label 27k
- P/N 5905685 - NRTL Lifting Cap Label 35K
- P/N 5905690 - NRTL Lifting Cap Label 40K

***DEPENDS ON LIFT MODEL AND CAPACITY**

F



PN 5905940

Product Data Label 5905940-New.pdf:

Size: 4.5"W x 2.3"H

Material: White Vinyl Pressure Sensitive Adhesive

Thickness: 4 Mil

Ink: U.V. protected CMYK 2/C Process

Finish: Polished

Print Process: Offset Lithography - 200 line-screen or 300 p.p.i. for digital

Lamination: Clear-gloss over-laminate for abrasion, chemical, and ultra violet protection

G



PN 5905953

2015_Serial_Tag-D-5905953.jpg:

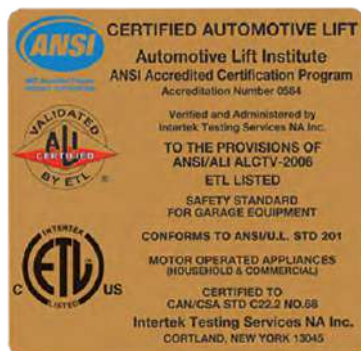
Size: 3"W x 3"H

Material: Material: 2 Mil. Matte Silver Polyester (Flex-PSE)

Print using thermal transfer printer with resin ribbon

Ink: 1 Color-Black

H



PN 5905326

ALI-Gold-Label-5905326.jpg

****FOR ALL APPROVED LIFTS ONLY**

4 Post Lifts Product Decal Positioning

****FOR ALL APPROVED
LIFTS ONLY**

D, H, G, F

**Front of Post
(Top to Bottom)**

E, C

**Back of Post
(Top to Bottom)**

A

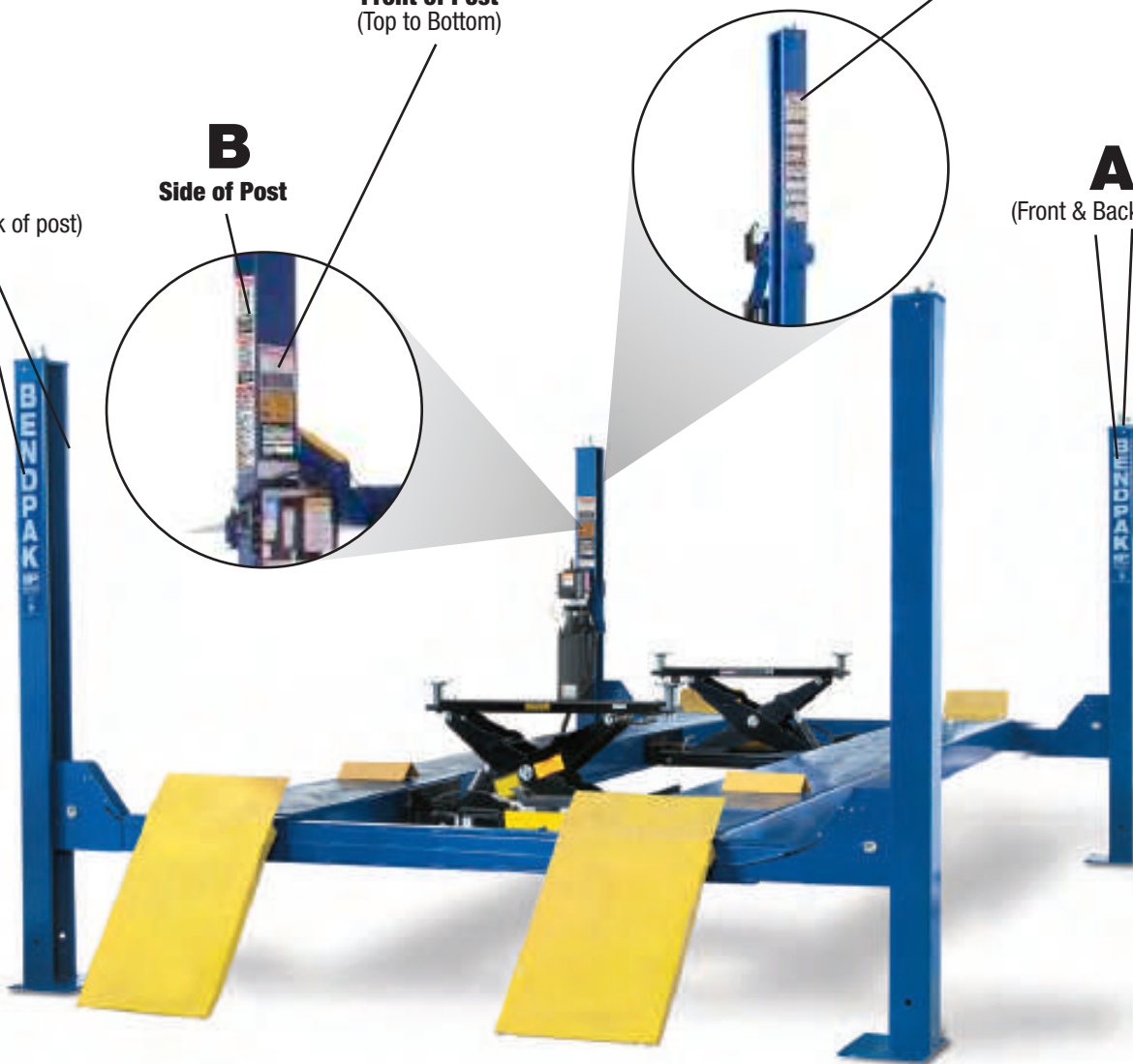
(Front & Back of post)

B

Side of Post

A

(Front & Back of post)



4 Post Lifts Packaging

BP BendPak. Santa Paula, CA USA www.bendpak.com	
MODEL NUMBER	SERIAL NUMBER
PN 5905285	

Serial_Tag_New-2015_Peel_Off-5905285.jpg:
Size: 3"W x 3"H
Material:Material: 2 Mil. Matte Silver Polyester (Flex-PSE)
Print using thermal transfer printer with resin ribbon
Ink: 1 Color-Black

PEEL OFF INVENTORY LABEL	
MODEL NUMBER	SERIAL NUMBER
PN 5905285	
Do not remove back sheet of this portion to prevent from sticking completely as shown in image.	





2016
NON-CE 4 Post Lifts
Colors & Graphics

MODELS:

HD-9SW HDS-40
HD-9SWX HDS-40X
HD-14T HD-9AE

12/31/15

CONFIDENTIAL INFORMATION.

You may not disclose, print, copy or disseminate this information.
Unauthorized use is a violation of federal criminal law.

4 Post Lifts Product Decal Positioning



Total of 4

PN 5905311

BPK Post Branding Decal-Large_5905311.pdf:

Material: Clear Adhesive PET

Size: 4.25"W x 38"H

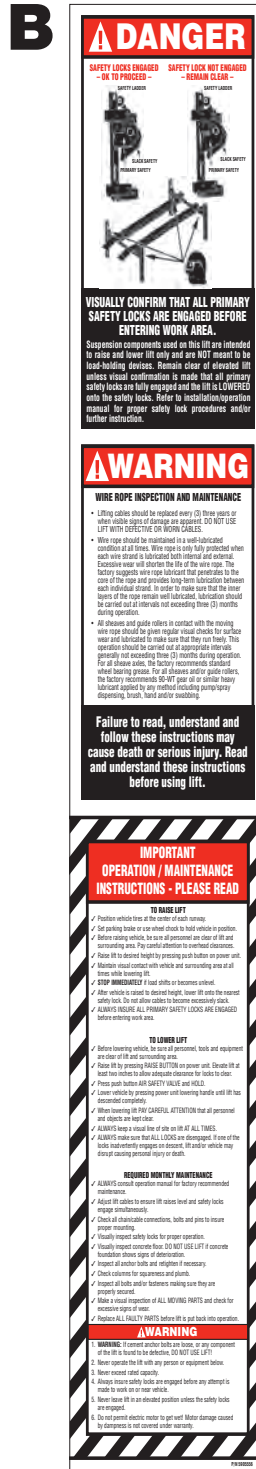
Thickness: 4 Mil

Finish: Polished

Ink: U.V. protected, Opaque White

Print Process: Silk Screen, 85 line-screen (Yellow color in file represents what should be clear PET material and SHOULD NOT print as Yellow ink. White area in file represents Opaque White ink.)

Lamination: Clear-gloss over-laminate for abrasion, chemical, and ultra violet protection



PN 5905556

4_Post_Safety_Decal.pdf:

Size: 4"W x 23"H

Material: White Vinyl Pressure Sensitive Adhesive

Thickness: 4 Mil

Ink: U.V. protected CMYK 2/C Process

Finish: Polished

Print Process: Offset Lithography - 200 line-screen or 300 p.p.i. for digital

Lamination: Clear-gloss over-laminate for abrasion, chemical, and ultra violet protection

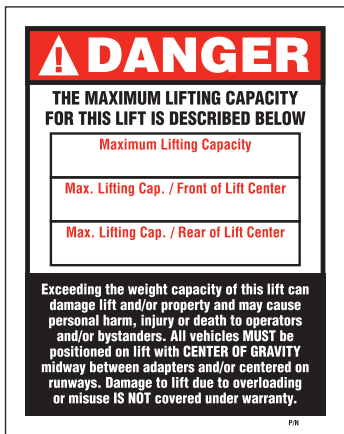


Ali_4_Post_labels.pdf:

(Order Labels from ALI)

4 Post Lifts Product Decal Positioning

***D**



- P/N 5905401 - Max Cap. Danger 7k
- P/N 5905695 - Max. Cap. Danger 7500
- P/N 5905402 - Max Cap. Danger 9k
- P/N 5905557 - Max. Cap. Danger 14K
- P/N 5905406 - Max Cap. Danger 18k
- P/N 5905407 - Max. Cap. Danger 27K
- P/N 5905408 - Max. Cap. Danger 35K
- P/N 5905409 - Max. Cap. Danger 40K

***Max. Cap. Danger.pdf:**

Size: 4"W x 5"H
 Material: White Vinyl Pressure Sensitive Adhesive
 Thickness: 4 Mil
 Ink: U.V. protected CMYK 2/C Process
 Finish: Polished
 Print Process: Offset Lithography - 200 line-screen or 300 p.p.i. for digital
 Lamination: Clear-gloss over-laminate for abrasion, chemical, and ultra violet protection

***E**



- P/N 5905645 - NRTL_Lifting_Cap_Label_7K
- P/N 5905700 - NRTL_Lifting_Cap_Label_7500
- P/N 5905650 - NRTL_Lifting_Cap_Label_9k
- P/N 5905665 - NRTL_Lifting_Cap_Label_14k
- P/N 5905675 - NRTL_Lifting_Cap_Label_18k
- P/N 5905680 - NRTL_Lifting_Cap_Label_27k
- P/N 5905685 - NRTL_Lifting_Cap_Label_35K
- P/N 5905690 - NRTL_Lifting_Cap_Label_40K

***NRTL_Lifting_Cap_Label_.pdf:**

Size: 4.5"W x 3.25"H
 Material: White Vinyl Pressure Sensitive Adhesive
 Thickness: 4 Mil
 Ink: U.V. protected CMYK 2/C Process
 Finish: Polished
 Print Process: Offset Lithography - 200 line-screen or 300 p.p.i. for digital
 Lamination: Clear-gloss over-laminate for abrasion, chemical, and ultra violet protection

***DEPENDS ON LIFT MODEL AND CAPACITY**

F



PN 5905940

Product_Data_Label_5905940-New.pdf:

Size: 4.5"W x 2.3"H
 Material: White Vinyl Pressure Sensitive Adhesive
 Thickness: 4 Mil
 Ink: U.V. protected CMYK 2/C Process
 Finish: Polished
 Print Process: Offset Lithography - 200 line-screen or 300 p.p.i. for digital
 Lamination: Clear-gloss over-laminate for abrasion, chemical, and ultra violet protection

G



PN 5905952

2015_Serial_Tag-C-5905952.jpg:

Size: 3"W x 3"H
 Material: Material: 2 Mil. Matte Silver Polyester (Flex-PSE)
 Print using thermal transfer printer with resin ribbon
 Ink: 1 Color-Black

H



PN 5905326

ALI-Gold-Label-5905326.jpg

****FOR ALI APPROVED LIFTS ONLY**

4 Post Lifts Product Decal Positioning

****FOR ALL APPROVED
LIFTS ONLY**

D, H, G, F

**Front of Post
(Top to Bottom)**

E, C

**Back of Post
(Top to Bottom)**

A

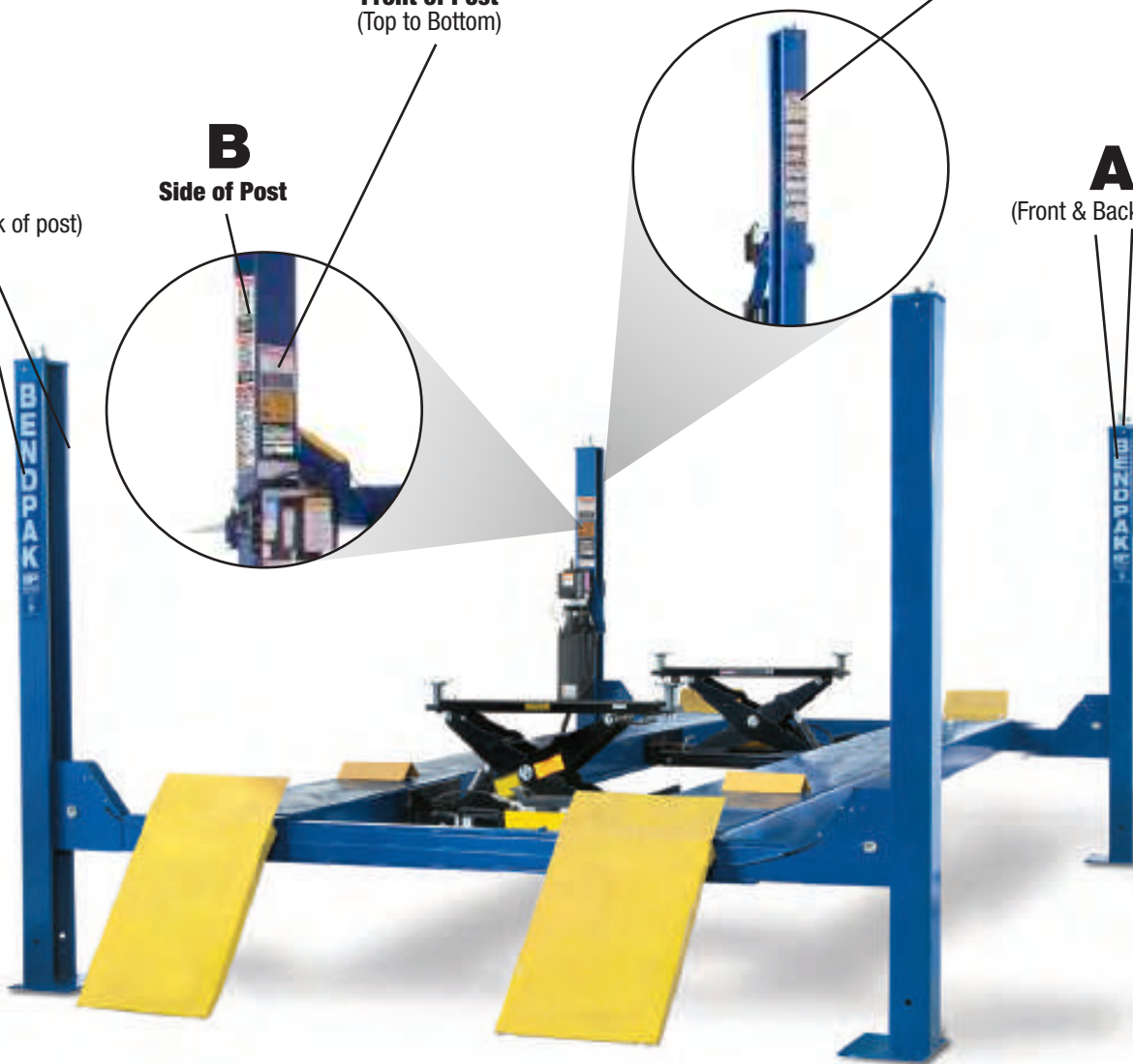
(Front & Back of post)

B

Side of Post

A

(Front & Back of post)



4 Post Lifts Packaging

BP BendPak Santa Paula, CA USA www.bendpak.com	
MODEL NUMBER	SERIAL NUMBER
PN 5905285	

Serial_Tag_New-2015_Peel_Off-5905285.jpg:
Size: 3"W x 3"H
Material:Material: 2 Mil. Matte Silver Polyester (Flex-PSE)
Print using thermal transfer printer with resin ribbon
Ink: 1 Color-Black

PEEL OFF INVENTORY LABEL	
MODEL NUMBER	SERIAL NUMBER
PN 5905285	

Do not remove back sheet of this portion to prevent from sticking completely as shown in image.





BendPak®

PROVIDING AUTOMOTIVE SERVICE SOLUTIONS

HDS 27 X Packaging Report

March 15, 2011



Place the off side ramp on the shipping angles and wrap it in cardboard.



Place one cross tube on one side of the ramp.



Stack both cross tubes and strap them together.





Place two posts in front of the cross tubes as shown.





Two posts will sit in front of the cross tubes.



Start placing the safety ladders on the posts. Make sure they are wrapped sufficiently.



Put all four safety ladders on top of the posts.







Strap the ladders, posts, and cross tubes to the off side ramp.



Place the other posts on the opposite side of the ramp.



Wrap the two posts in cardboard.





Place the tire stops and top plates inside of the posts.





Make sure both posts are wrapped properly.





Set the approach ramps on top of the posts.



Strap the posts and approach ramps together to the off side ramp.



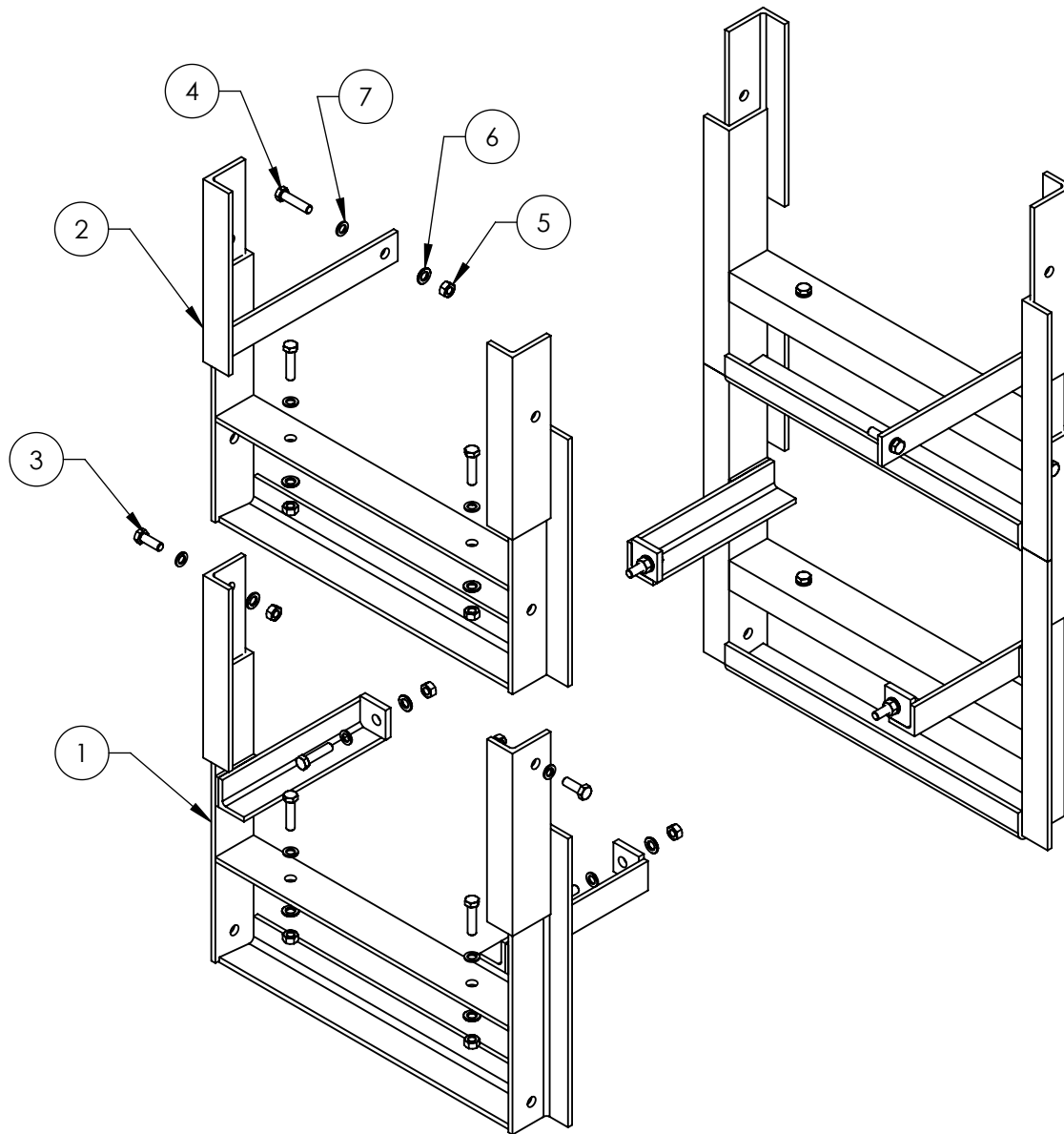
The parts box will sit in the middle of the ramp.





This will be the final assembly. Wrap the entire lift in cardboard and plastic.

REV	DESCRIPTION	REVISION	DATE	EDITED BY	ECO#
A	PRODUCTION RELEASE		09/30/2014	MR	00666



NOTE: UNLESS OTHERWISE SPECIFIED.

1. SEE SHIPPING INSTRUCTIONS FOR FINAL PACKAGING

NEXT ASSEMBLY
SHIPPING
ANGLE

ITEM NO.	PART NUMBER	DESCRIPTION	QTY.	REV
1	5600877	HDS-18/27 POWERSIDE SHIPPING ANGLE	2	A
2	5600879	HDS-18/27 OFFSIDE SHIPPING ANGLE	2	A
3	5530076	HHB M12 x 1.75 x 35mm	4	-
4	5530193	HHB M12 x 1.75 x 50	14	-
5	5535354	NUT M12 x 1.75	18	-
6	5545347	WASHER M12 FLAT WASHER	18	-
7	5545201	WASHER M12 SPRING LOCK	19	-

DO NOT SCALE DRAWING

NAME DATE

DRAWN MR 09/30/2014

CHECKED

THIRD ANGLE PROJECTION



BendPak 1645 LEMONWOOD DR.
SANTA PAULA, CA 93060

TITLE: HDS-18/27 SHOPPING
ANGLE SET

SIZE DWG. NO.

A 5215420

REV

A

SCALE: 1:10

SHEET 1 OF 1



PROPRIETARY AND CONFIDENTIAL
THE INFORMATION CONTAINED IN THIS DRAWING IS
THE SOLE PROPERTY OF BENDPAK INC. ANY
REPRODUCTION IN PART OR AS A WHOLE WITHOUT
THE WRITTEN PERMISSION OF BENDPAK INC. IS
PROHIBITED.

PART SPECIFICATION FORM

BENDPAK Number:	5530076
MRP Description:	HHB M12 x 1.75 x 35
Date:	10/07/2009
Revision :	B
ECO :	00300

1. Engineering Specification	
Application:	
HEX HEAD BOLT	
Detailed Description:	
Head Style	Standard Hex
Material Type	Steel
Finish	Zinc-Plated
System of Measurement	Metric
Metric Thread Size	M12
Metric Thread Pitch	1.75 mm
Length	35 mm
Head Width	19 mm
Head Height	7.5 mm
Thread Length	Fully Threaded
Thread Fit	Class 6h
Thread Direction	Right Handed
Class/Grade	CLASS 4.8/GRADE 2 OR BETTER

2. Vendor Information			
Approved Vendor	Vendor Part #	Contact #	Preferred Vendor
1)MCMMASTER-CARR	91280A718	404-629-6500	YES
2)			
3)			

PART SPECIFICATION FORM

BENDPAK Number:	5530193
MRP Description:	HHB M12 x 1.75 x 50
Date:	04/16/2010
Revision :	A
ECO :	00339

1. Engineering Specification	
Application:	
HEX HEAD BOLT	
Detailed Description:	
Head Style	Standard Hex
Material Type	Steel
Finish	Zinc-Plated
Grade/Class	Class 4.8 or greater
System of Measurement	Metric
Metric Thread Size	M12
Metric Thread Pitch	1.75 mm
Length	50 mm
Head Width	19 mm
Head Height	7.5 mm
Thread Length	Fully Threaded
Thread Fit	Class 6h
Thread Direction	Right Handed
Self-Locking Method	None

2. Vendor Information			
Approved Vendor	Vendor Part #	Contact #	Preferred Vendor
1) MCMaster CARR	91280A724	404-629-6500	YES
2)			

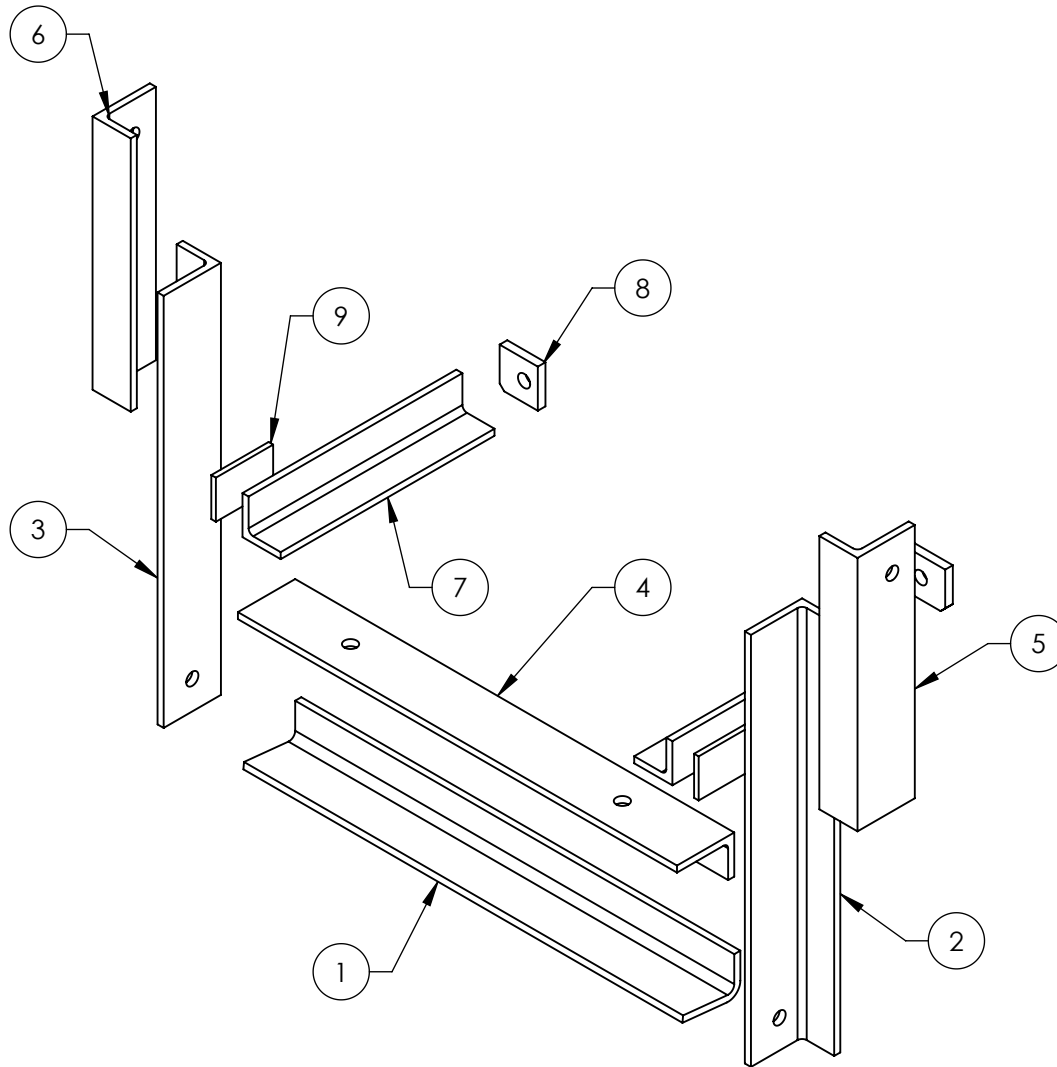
PART SPECIFICATION FORM

BENDPAK Number:	5545201
MRP Description:	WASHER M12 x 21mm SL
Date:	02/12/2008
Revision :	A
ECO :	00147

1. Engineering Specification
<p><u>Application:</u></p> <p>GENERAL FASTENER</p>
<p><u>Detailed Description:</u></p> <p>SPLIT LOCK WASHER FOR USE WITH 12mm BOLT 21mm OD ZINC PLATED</p>

2. Vendor Information			
Approved Vendor	Vendor #	Reference #	Preferred Vendor
1) McMaster Carr	91202A246	330 342 6100	
2)			
3)			



REV	DESCRIPTION	REVISION	DATE	EDITED BY	ECO#
A	PRODUCTION RELEASE		09/25/2014	MR	00666



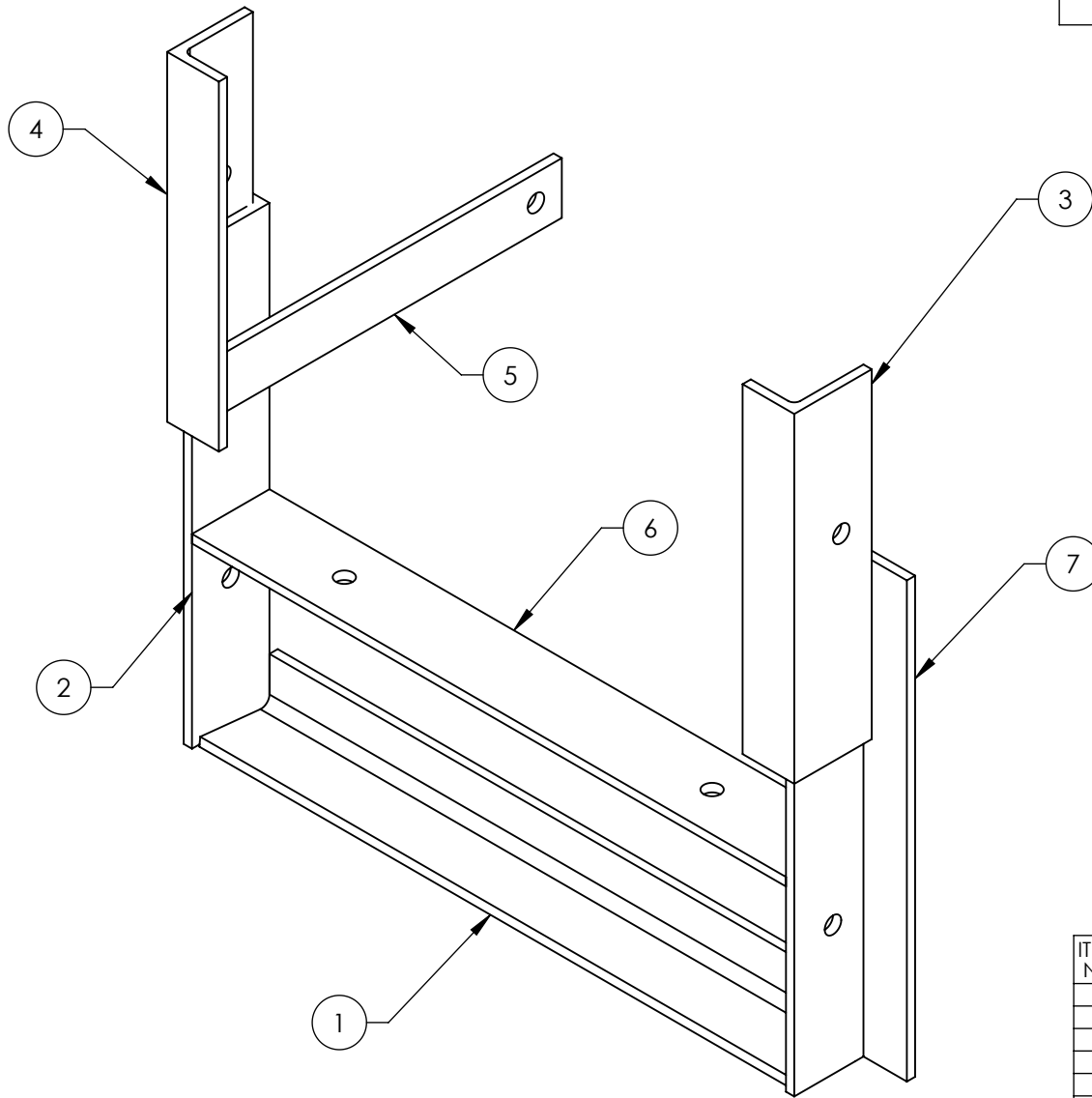
NOTE: UNLESS OTHERWISE SPECIFIED.

1. BREAK AND DEBURR ALL SHARP EDGES 0.3mm
2. REMOVE ALL WELD SPLATTER
3. PAINTING NOT REQUIRED

ITEM NO	PART NUMBER	DESCRIPTION	QTY	REV
1	5781029	HDS-18/27 SHIPPING ANGLE, BOTTOM ANGLE	1	A
2	5781027	HDS-18/27 POWERSIDE SHIPPING ANGLE, SIDE ANGLE LH	1	A
3	5781028	HDS-18/27 POWERSIDE SHIPPING ANGLE, SIDE ANGLE RH	1	A
4	5781030	HDS-18/27 SHIPPING ANGLE, MID ANGLE	1	A
5	5781025	HDS-18/27 POWERSIDE SHIPPING ANGLE, TOP ANGLE LH	1	A
6	5781026	HDS-18/27 POWER SHIPPING ANGLE, TOP ANGLE RH	1	A
7	5781031	HDS-18/27 POWERSIDE SHIPPING ANGLE, SIDE ARM ANGLE	2	A
8	5781032	HDS-18/27 SHIPPING ANGLE BOLT CONNECTOR	2	A
9	5781033	HDS-18/27 SHIPPING ANGLE SPACER	2	A

DO NOT SCALE DRAWING	NAME	DATE	 BendPak <small>POWERING AUTOMOTIVE SERVICE SOLUTIONS</small>	1645 LEMONWOOD DR. SANTA PAULA, CA 93060	
	DRAWN	MR		09/25/2014	
	CHECKED				
	THIRD ANGLE PROJECTION			TITLE: HDS-18/27 POWERSIDE SHIPPING ANGLE	
				SIZE DWG. NO.	
	DIMENSIONS ARE IN MM TOLERANCES: 0. = ±1.5 0.0 = ±0.5 ANGULAR: 0. = ±2° SURFACE FINISH 1.6 ISO Ra μm FOR MACHINED SURFACES UNLESS OTHERWISE SPECIFIED			REV	
	PROPRIETARY AND CONFIDENTIAL THE INFORMATION CONTAINED IN THIS DRAWING IS THE SOLE PROPERTY OF BENDPAK INC. ANY REPRODUCTION IN PART OR AS A WHOLE WITHOUT THE WRITTEN PERMISSION OF BENDPAK INC. IS PROHIBITED.			A 5600877 A	
	NEXT ASSEMBLY 5215420			SCALE: 1:7	
				SHEET 1 OF 2	

REV	DESCRIPTION	REVISION	DATE	EDITED BY	ECO#
A	PRODUCTION RELEASE		09/30/2014	MR	00666



ITEM NO	PART NUMBER	DESCRIPTION	QTY	REV
1	5781029	HDS-18/27 SHIPPING ANGLE, BOTTOM ANGLE	1	A
2	5781021	HDS-18/27 OFFSIDE SHIPPING ANGLE, SIDE ANGLE RH	1	A
3	5781022	HDS-18/27 OFFSIDE SHIPPING ANGLE, TOP SIDE ANGLE LH	1	A
4	5781023	HDS-18/27 OFFSIDE SHIPPING ANGLE, TOP ANGLE RH	1	A
5	5781024	HDS-18/27 OFFSIDE SHIPPING ANGLE, SIDE ARM RH	1	A
6	5781030	HDS-18/27 SHIPPING ANGLE, MID ANGLE	1	A
7	5781020	HDS-18/27 OFFSIDE SHIPPING ANGLE TOP ANGLE LH	1	A

NOTE: UNLESS OTHERWISE SPECIFIED.

- BREAK AND DEBURR ALL SHARP EDGES 0.3mm
- REMOVE ALL WELD SPLATTER
- PAINTING NOT REQUIRED

DO NOT SCALE DRAWING	NAME	DATE	1645 LEMONWOOD DR. SANTA PAULA, CA 93060
	DRAWN	MR 09/26/2014	
	CHECKED		TITLE: HDS-18/27 OFFSIDE SHIPPING ANGLE
	THIRD ANGLE PROJECTION		
			SIZE DWG. NO. REV A 5600879 A
DIMENSIONS ARE IN MM TOLERANCES: 0. = ±1.5 0.0 = ±0.5 ANGULAR: 0. = ±2° SURFACE FINISH 1.6 ISO Ra μm FOR MACHINED SURFACES UNLESS OTHERWISE SPECIFIED			SCALE: 1:5 SHEET 1 OF 2
PROPRIETARY AND CONFIDENTIAL THE INFORMATION CONTAINED IN THIS DRAWING IS THE SOLE PROPERTY OF BENDPAK INC. ANY REPRODUCTION IN PART OR AS A WHOLE WITHOUT THE WRITTEN PERMISSION OF BENDPAK INC. IS PROHIBITED.			

NEXT ASSEMBLY
5215420