

# **ELECTRIC BICYCLE**

## **OPERATION INSTRUCTION**

Products Standard:GB17761-1999

Production license number : ( 粤 ) XK16-002-01005

Respect of customer friend, for the sake of you and the safety of others, in order to ensure the electric bicycle excellent performance, stable, please read the instructions before use before using this product. Provided in this manual are the daily form and maintain knowledge, to facilitate you more familiar with the local manipulation, any improper operation, is likely to be damage to your car. Because the product continuous improvement in technology updates, may not reality and instruction is a little different, please in kind prevail.

## NOTES

1. Before riding, please read the 《operation instruction》 carefully. Please check whether the parts in good condition to ensure the safety of you riding. If you there have problem, please contact with dealers.

2. Please abide by the municipal traffic regulations. Please slow down when you go through the lippy area in rain and snow day. In order to ensure safety, the brake should increase the braking distance.


3. This bike can work in the rain, snow weather, but can't put water into it. When water flooded to the rear wheel motor wheel, will cause the vehicle internal wiring short circuit and damage to the electrical, please attention!

4. The battery of this bike is safe power supply. But can't use wet hand to touch the battery compartment metal contact at the same time.

5. Please don't remove the decomposition parts. If it needs to change, please consult the company customer service staff under the guidance of purchase standard parts.

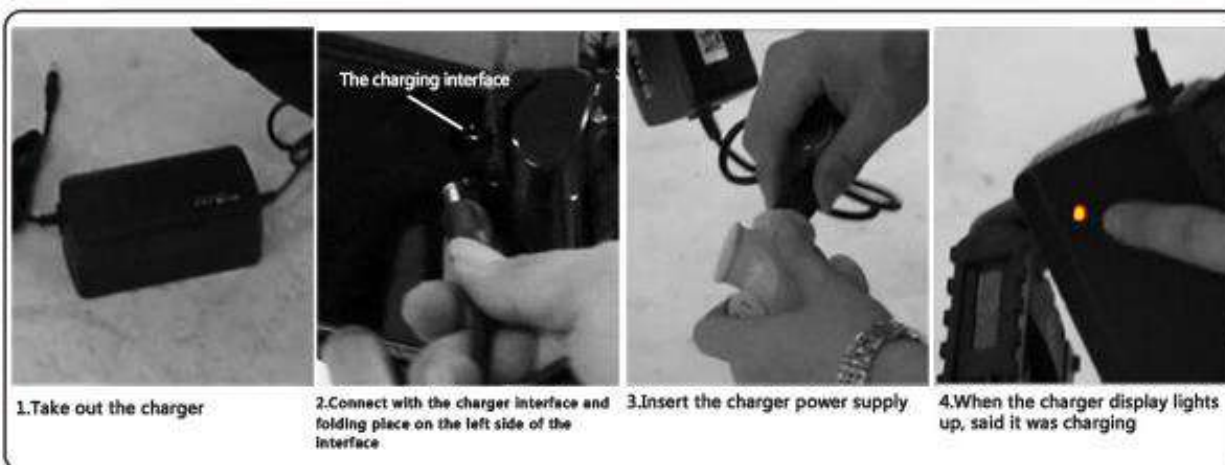
6. For the safety of others, please don't let the people who not well ride with the bike. And also protect your car from unnecessary damage.

## TECHNICAL PARAMETERS

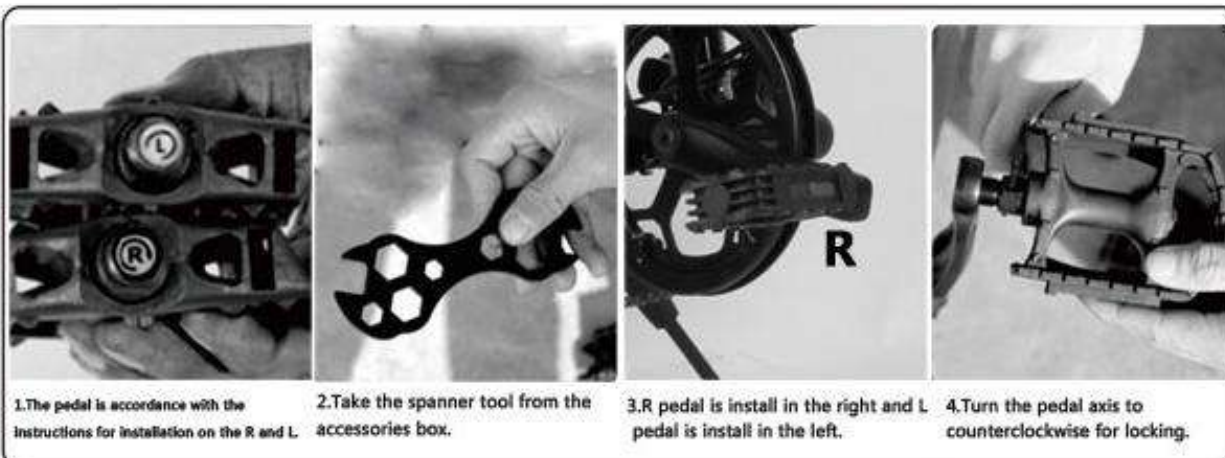
 The vehicle weight	about 30kg
 Load	about 75kg
 Max speed	about 25km/h
 The mileage	about 35~50km (According to the actual road)
 Climbing ability	≤15°
 Rated power	≤400
 The motor voltage	36V/48V
 Charging time	4~6H

## THE CHARGING PROCESS

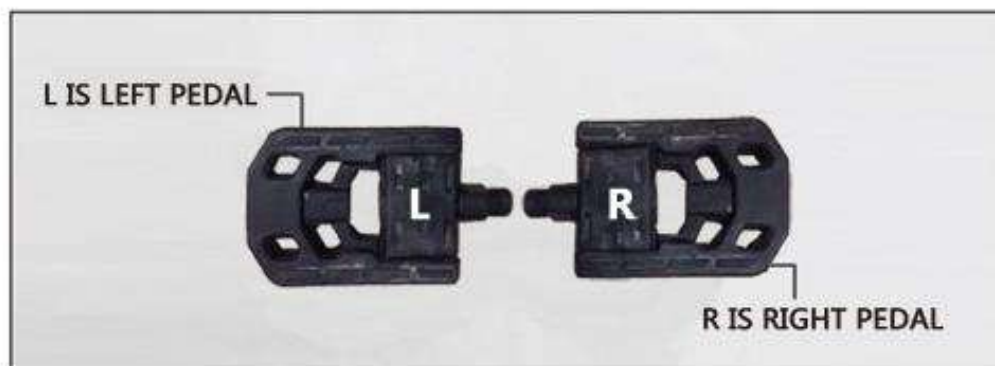
1. When charging the battery, the LED light on the charger will turn to RED, if the battery is fully charged, the LED light on the charger will turn to GREEN.
2. The battery charging time will be varied from 4~6 hours depending on the battery capacity and the charger's charging current.
3. When charging the battery, please make sure it is out of children's touch.
4. Please don't remove the charger's cover under any circumstance.
5. Please don't put any materials on top of the charger when it is charging the battery.
6. This charger is only for indoor use.
7. This battery charger is SAA certified and it is Australian standard compliance.



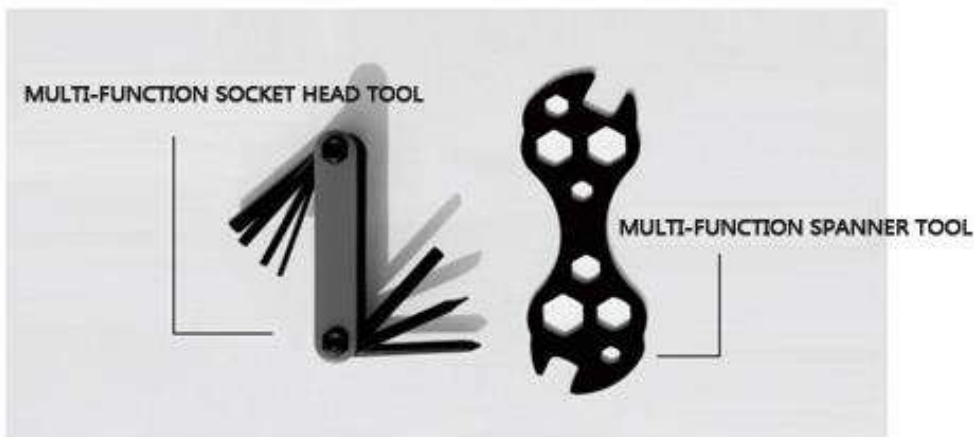
## PEDAL INSTALLATION



■ PLEASE FIND THE MARK OF "L" (FOR LEFT PEDAL) AND "R" (FOR RIGHT PEDAL) ON THE PEDAL



■ REMARK: TAKE YOUR OWN MULTIFUNCTIONAL TOOL



## RUNNING ATTENTION

1. It should accelerate slowly when the eBike just starts. Pedal assistant mode is recommended when you just start the eBike.
2. When customer is climbing, pedal assistance mode is recommended.
3. If customer wants to save battery power, Pedal assistance mode is recommended.
- 4 It should avoid keep tighten the shift leverset after using the brake so as to avoid the motor overload and damage other parts too much.
- 5 The maximum load of 100kg is recommended.
- 6 Please turn off the power when riding on a rough road if not safe.
- 7 If not using the eBike, please switch off the power.



## PARKING ATTENTION

1. When you get off the bike, you should shut off the power switch. In order to prevent the rotational speed control using when pushing or spin so the car will suddenly start to make the accident.
2. When parking the bike, it should be shut off the power and remove the key
3. For not only your driving safety, but also make your bike can stay in the best condition, please make the bike in regular maintenance and cleaning.

## MAINTENANCE OF CLEANING

1. Whether the front screw locking.
2. Whether the decorative pattern of tyre wear and cracking. Before and after the tire pressure whether appropriate. Whether the drive system is smooth.
3. Whether each part joint is normal: brake line cord is used in lubrication condition.
4. If does not use the default for a long time, please see to it that regular charge (generally within two months or so) in order to maintain your battery.

## THE WARRANTY

accessories	The quality problem	The warranty period
The motor	Rubber fracture, serious damage, the motor can not use	one year
Instrument accelerator	Cannot use in natural conditions (It is not external force impact damage)	one year
The controller	Failure occurs under normal use	one year
The charger	Failure occurs under normal use	one year
The lithium battery	Unable to charge and power generation	one year
Structure	Failure of deformation and fracture under normal use	one year

**Remark :** If there have other parts damaged or problem, please contact our customer service personnel.

## MAINTAIN SELF-INSPECTION CONTENT

1. Rinse is forbidden, in order to avoid the internal electronic components and circuit accidents caused by soaking.
2. Please use neutral detergent, use cloth wipe gently paint or plastic surface dirt, and then try to clean with dry cloth.
3. Please use only oil body metal parts for maintenance.
4. Please don't use oil the metal parts for maintenance.

## IMPORTANT NOTE!

1. Form the good habit of charging in time every day, every time when riding must be timely enough before the minimum allowed voltage power, to make the battery for longer periods of time at your service, so, get into the habit of charging in time every day is very important.
2. When you lift the battery box assembly, please pay attention to avoid the metal objects (such as lead, keys, etc.) or insert the battery hole on the battery output is negative contact, to avoid short circuit batteries, flint, safety problems.
3. This bike can work in the rain, snow weather, but can't put water into it. When water flooded to the rear wheel motor wheel, will cause the vehicle internal wiring short circuit and damage to the electrical, please attention!
4. If dismantle the bike without authorization, it will bring your electric bicycle unsafe hidden danger and cause the dangerous
5. It is forbidden to downhill. When you are speeding the brakes in a fast moving, do not use the front brake firstly. So as to avoid the center of gravity moved forward.
6. Brake parts are banned oil, so as not to cause the brakes aren't work.
7. Please confirm the brake wheel, seat, frame, handlebar, such as safety and reliability before riding to avoid accidents.
8. Please avoid drive on the uneven stairs, mud and gravel road, in case to make the tire explosion-proof and rim deformation so it will damage your electric bike.
9. Battery it is forbidden to close to the fire, avoiding the explosive or corrosive gas.
- 10 Please do not remove the battery box body without authorization, to avoid damage to internal components. Shall not be damaged batteries and battery lifted the lid on the label, otherwise you can not have the warranty commitments.
11. In order to avoid danger and the damage to the battery, it is forbidden to use wire or conductor nipple is the cathode of the battery.
12. Please avoid the battery fall to prevent damage to the shell. And please handle the battery gently.
13. Please note that the electric bike can not in long distance travel.



**Remark:** If you have any questions about it, please call 86-20-29015409